



Title Plan - DP 503675

Survey Number DP 503675
Surveyor Reference 235361 Stage P
Surveyor Keith Alex Ashby
Survey Firm Aurecon (Christchurch)
Surveyor Declaration I Keith Alex Ashby, being a licensed cadastral surveyor, certify that:
(a) this dataset provided by me and its related survey are accurate, correct and in accordance with the Cadastral Survey Act 2002 and the Rules for Cadastral Survey 2010, and
(b) the survey was undertaken by me or under my personal direction.
Declared on 24 Nov 2016 03:23 PM

Survey Details

Dataset Description Lots 162-211, 3014-3015, 3030 Being Subdivision of Lot 3030 DP 500854
Status Deposited
Land District Canterbury **Survey Class** Class A
Submitted Date 24/11/2016 **Survey Approval Date** 30/11/2016
Deposit Date 24/01/2017

Territorial Authorities

Christchurch City

Comprised In

CT 747624

Created Parcels

Parcels	Parcel Intent	Area	CT Reference
Area CA Deposited Plan 503675	Land Covenant		
Area CB Deposited Plan 503675	Land Covenant		
Lot 162 Deposited Plan 503675	Fee Simple Title	0.0452 Ha	756753
Lot 163 Deposited Plan 503675	Fee Simple Title	0.0458 Ha	756754
Lot 164 Deposited Plan 503675	Fee Simple Title	0.0650 Ha	756755
Lot 165 Deposited Plan 503675	Fee Simple Title	0.0622 Ha	756756
Lot 166 Deposited Plan 503675	Fee Simple Title	0.0650 Ha	756757
Lot 167 Deposited Plan 503675	Fee Simple Title	0.0650 Ha	756758
Lot 168 Deposited Plan 503675	Fee Simple Title	0.0650 Ha	756759
Lot 169 Deposited Plan 503675	Fee Simple Title	0.0650 Ha	756760
Lot 170 Deposited Plan 503675	Fee Simple Title	0.0614 Ha	756761
Lot 171 Deposited Plan 503675	Fee Simple Title	0.0605 Ha	756762
Lot 172 Deposited Plan 503675	Fee Simple Title	0.0605 Ha	756763
Lot 173 Deposited Plan 503675	Fee Simple Title	0.0623 Ha	756764
Lot 174 Deposited Plan 503675	Fee Simple Title	0.0609 Ha	756765
Lot 175 Deposited Plan 503675	Fee Simple Title	0.0647 Ha	756766
Lot 176 Deposited Plan 503675	Fee Simple Title	0.0609 Ha	756767
Lot 177 Deposited Plan 503675	Fee Simple Title	0.0609 Ha	756768
Lot 178 Deposited Plan 503675	Fee Simple Title	0.0610 Ha	756769
Lot 179 Deposited Plan 503675	Fee Simple Title	0.0611 Ha	756770



Title Plan - DP 503675

Created Parcels

Parcels	Parcel Intent	Area	CT Reference
Lot 180 Deposited Plan 503675	Fee Simple Title	0.0804 Ha	756771
Lot 181 Deposited Plan 503675	Fee Simple Title	0.0806 Ha	756772
Lot 182 Deposited Plan 503675	Fee Simple Title	0.0808 Ha	756773
Lot 183 Deposited Plan 503675	Fee Simple Title	0.0810 Ha	756774
Lot 184 Deposited Plan 503675	Fee Simple Title	0.0816 Ha	756775
Lot 185 Deposited Plan 503675	Fee Simple Title	0.0889 Ha	756776
Lot 186 Deposited Plan 503675	Fee Simple Title	0.0952 Ha	756777
Lot 187 Deposited Plan 503675	Fee Simple Title	0.0878 Ha	756778
Lot 188 Deposited Plan 503675	Fee Simple Title	0.0809 Ha	756779
Lot 189 Deposited Plan 503675	Fee Simple Title	0.0822 Ha	756780
Lot 190 Deposited Plan 503675	Fee Simple Title	0.0822 Ha	756781
Lot 191 Deposited Plan 503675	Fee Simple Title	0.0821 Ha	756782
Lot 192 Deposited Plan 503675	Fee Simple Title	0.0820 Ha	756783
Lot 193 Deposited Plan 503675	Fee Simple Title	0.0601 Ha	756784
Lot 194 Deposited Plan 503675	Fee Simple Title	0.0601 Ha	756785
Lot 195 Deposited Plan 503675	Fee Simple Title	0.0650 Ha	756786
Lot 196 Deposited Plan 503675	Fee Simple Title	0.0650 Ha	756787
Lot 197 Deposited Plan 503675	Fee Simple Title	0.0604 Ha	756788
Lot 198 Deposited Plan 503675	Fee Simple Title	0.0604 Ha	756789
Lot 199 Deposited Plan 503675	Fee Simple Title	0.0648 Ha	756790
Lot 200 Deposited Plan 503675	Fee Simple Title	0.0607 Ha	756791
Lot 201 Deposited Plan 503675	Fee Simple Title	0.0625 Ha	756792
Lot 202 Deposited Plan 503675	Fee Simple Title	0.0600 Ha	756793
Lot 203 Deposited Plan 503675	Fee Simple Title	0.0601 Ha	756794
Lot 204 Deposited Plan 503675	Fee Simple Title	0.0464 Ha	756795
Lot 205 Deposited Plan 503675	Fee Simple Title	0.0450 Ha	756796
Lot 206 Deposited Plan 503675	Fee Simple Title	0.0462 Ha	756797
Lot 207 Deposited Plan 503675	Fee Simple Title	0.0500 Ha	756798
Lot 208 Deposited Plan 503675	Fee Simple Title	0.0500 Ha	756799
Lot 209 Deposited Plan 503675	Fee Simple Title	0.0462 Ha	756800
Lot 210 Deposited Plan 503675	Fee Simple Title	0.0450 Ha	756801
Lot 211 Deposited Plan 503675	Fee Simple Title	0.0450 Ha	756802
	Road	0.3656 Ha	
	Road	0.9231 Ha	
Area ZC Deposited Plan 503675	Easement		
Area ZA Deposited Plan 503675	Easement		
Area A Deposited Plan 503675	Easement		
Area ZB Deposited Plan 503675	Easement		
Lot 3030 Deposited Plan 503675	Fee Simple Title	29.1782 Ha	756803
Total Area		33.6979 Ha	

Schedule / Memorandum

Land Registration District	Plan Number	Surveyor Ref
Canterbury	DP 503675	235361 – Stage 1p

Territorial Authority (the Council)	Council Ref
Christchurch City Council	RMA92027815

MEMORANDUM OF EASEMENT IN GROSS			
Purpose	Servient Tenement		Grantee
	Lot No	Shown	
Right to Drain Water in Gross	3030	ZB	Christchurch City Council

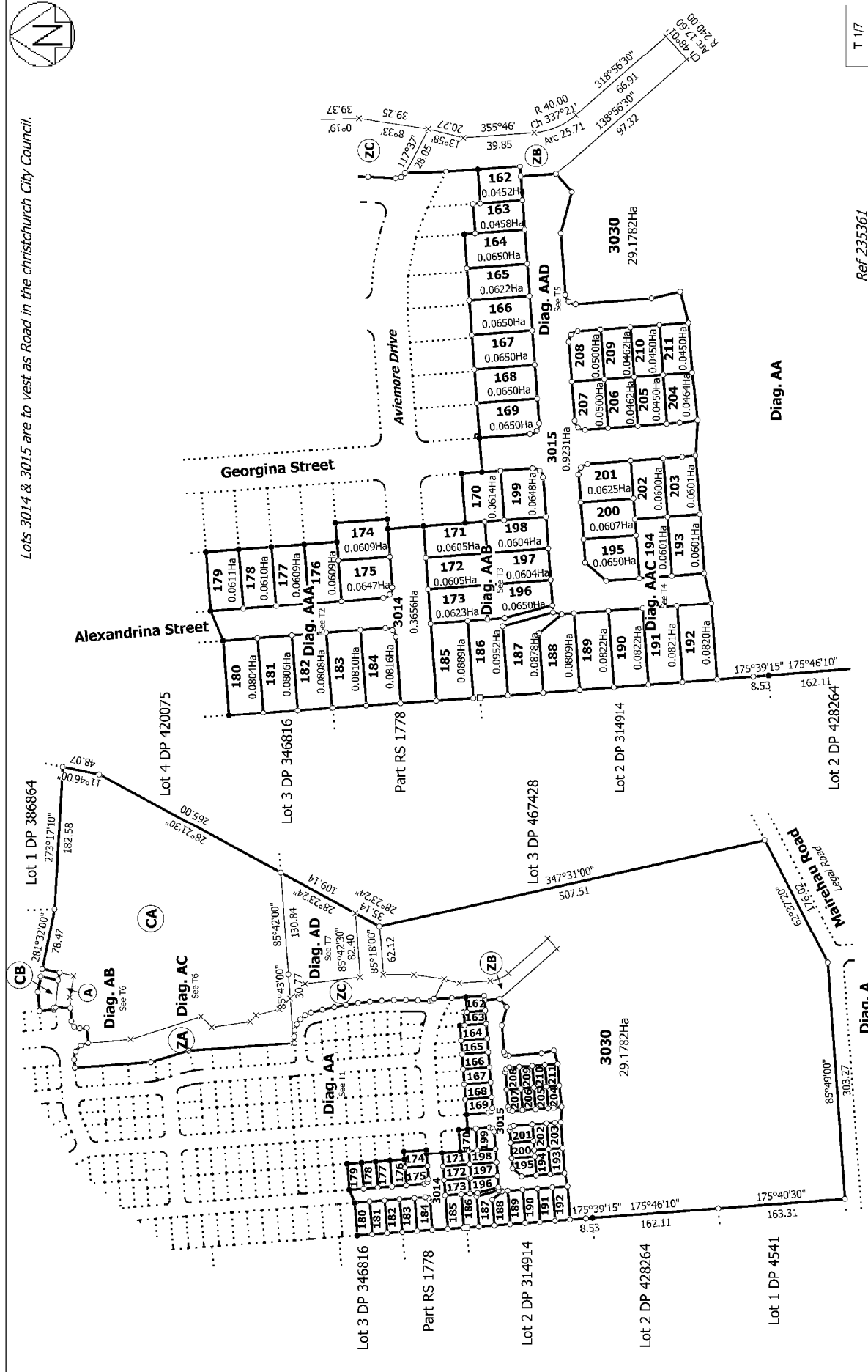
SCHEDULE OF EXISTING EASEMENTS			
Purpose	Servient Tenement		Document
	Lot No	Shown	
Right to Drain Water	3030	A	EI 10376465.4
Right to Convey Electricity in Gross	3030	A	EI 10369087.3
Right to Drain Water in Gross	3030	ZA, ZC	EI 10563821.9

NOTES:

Areas A, CA, ZA & CB are subject to a Land Covenant created by EI 10369087.1.
 Lots 3014 & 3015 are to vest as Road in the Christchurch City Council.
 Existing Right to Drain Water & Sewage, Right to Convey Water in Gross shown as D over Lot 3030 on DP 500854 (CT747624) and also described in document EI 10563821.9 is to be extinguished.
 Existing Right to Telecommunications and Computer Media in Gross shown as D over Lot 3030 on DP 500854 (CT747624) and also described in document EI 10563821.10 is to be extinguished.
 Existing Right to Convey Electricity in Gross shown as D over Lot 3030 on DP 500854 (CT747624) and also described in document EI 10563821.8 is to be extinguished.



Lots 3014 & 3015 are to vest as Road in the Christchurch City Council.



T 1/7

Ref 235361

Surveyor: Keith Alex Ashby
 Firm: Aurecon (Christchurch)

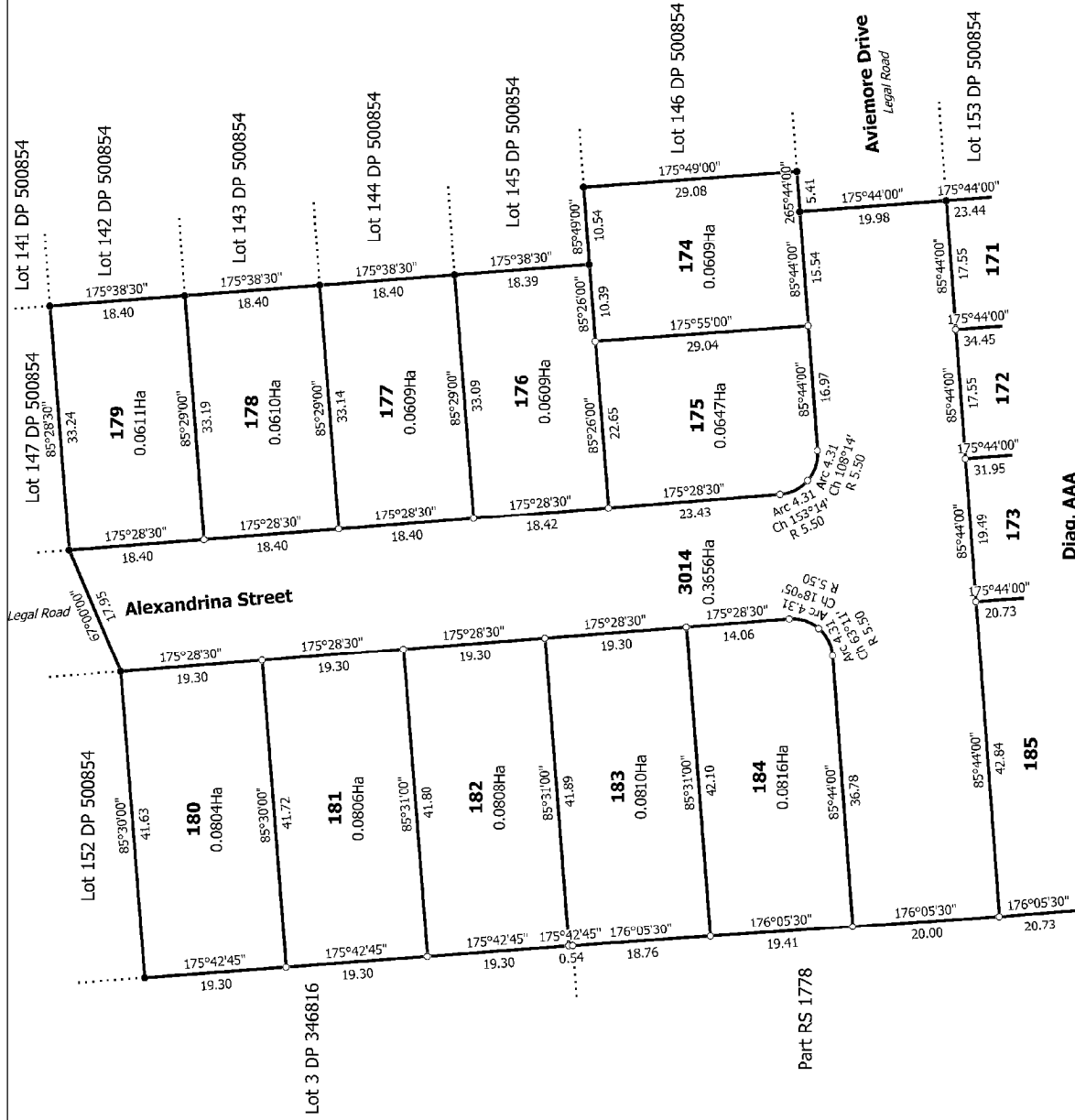
Title Plan
 DP 503675

Deposited on: 24/01/2017

Land District: Canterbury

Lots 162-211, 3014-3015, 3030 Being Subdivision of Lot 3030 DP 500854

Digitally Generated Plan
 Generated on: 31/01/2017 1:53pm Page 4 of 10



T 2/7

Ref 235361

Land District: Canterbury
 Digitally Generated Plan
 Generated on: 31/01/2017 1:53pm Page: 5 of 10

Surveyor: Keith Alex Ashby
 Firm: Aurecon (Christchurch)

Diag. AAA
 Lots 162-211, 3014-3015, 3030 Being Subdivision of Lot 3030 DP 500854

Title Plan
 DP 503675
 Deposited on: 24/01/2017



T 4/7

Land District: Canterbury

Digitally Generated Plan
Generated on: 31/01/2017 1:53pm Page: 7 of 10

Surveyor: Keith Alex Ashby
Firm: Aurecon (Christchurch)

Title Plan
DP 503675

Lots 162-211, 3014-3015, 3030 Being Subdivision of Lot 3030 DP 500854

Deposited on: 24/01/2017

