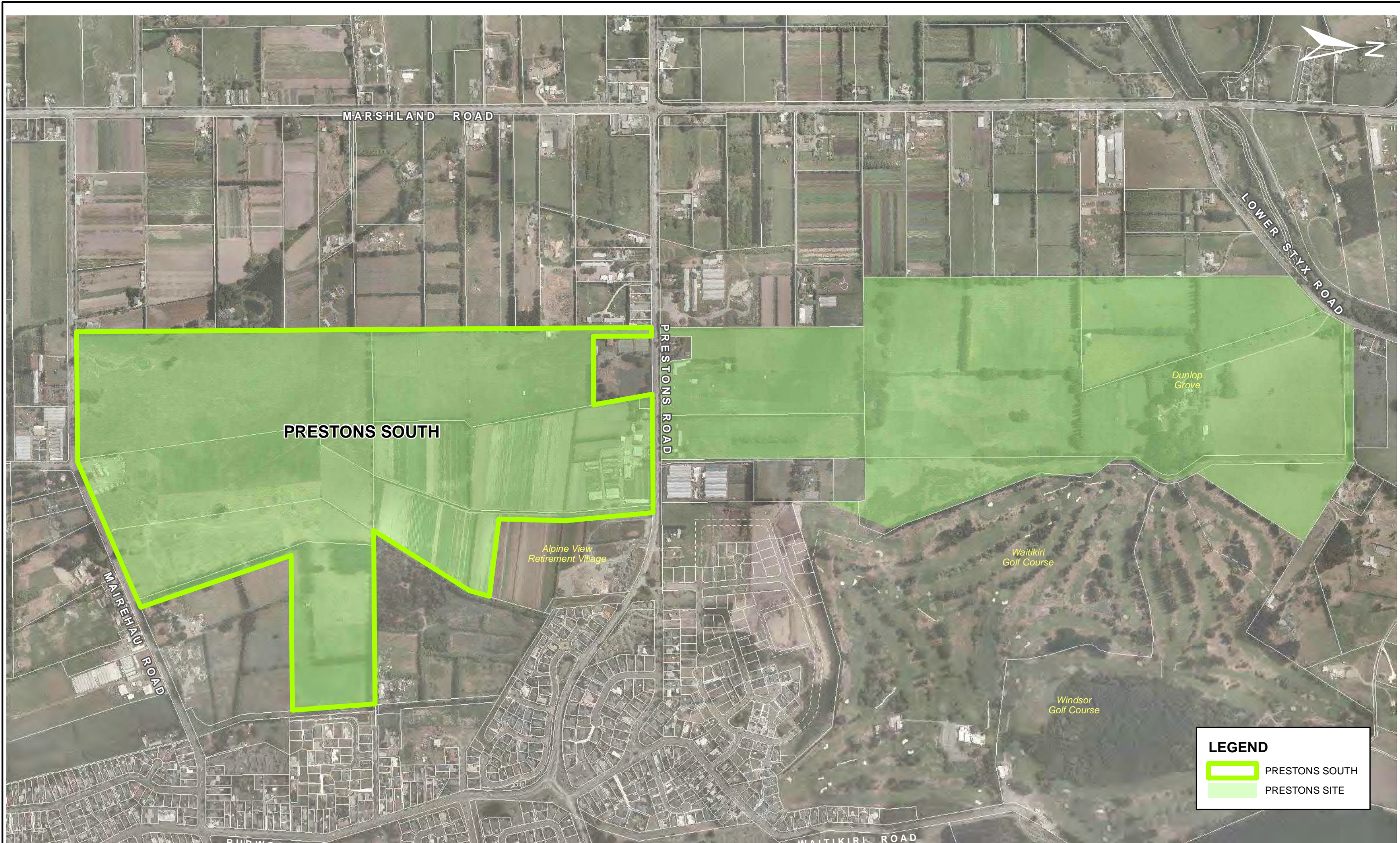


# Appendix A

## Figures



**LEGEND**

- PRESTONS SOUTH
- PRESTONS SITE

**NOTES** - PROPERTY DATA FROM LINZ JULY 2010  
 - AERIAL IMAGE FROM GOOGLE EARTH PRO

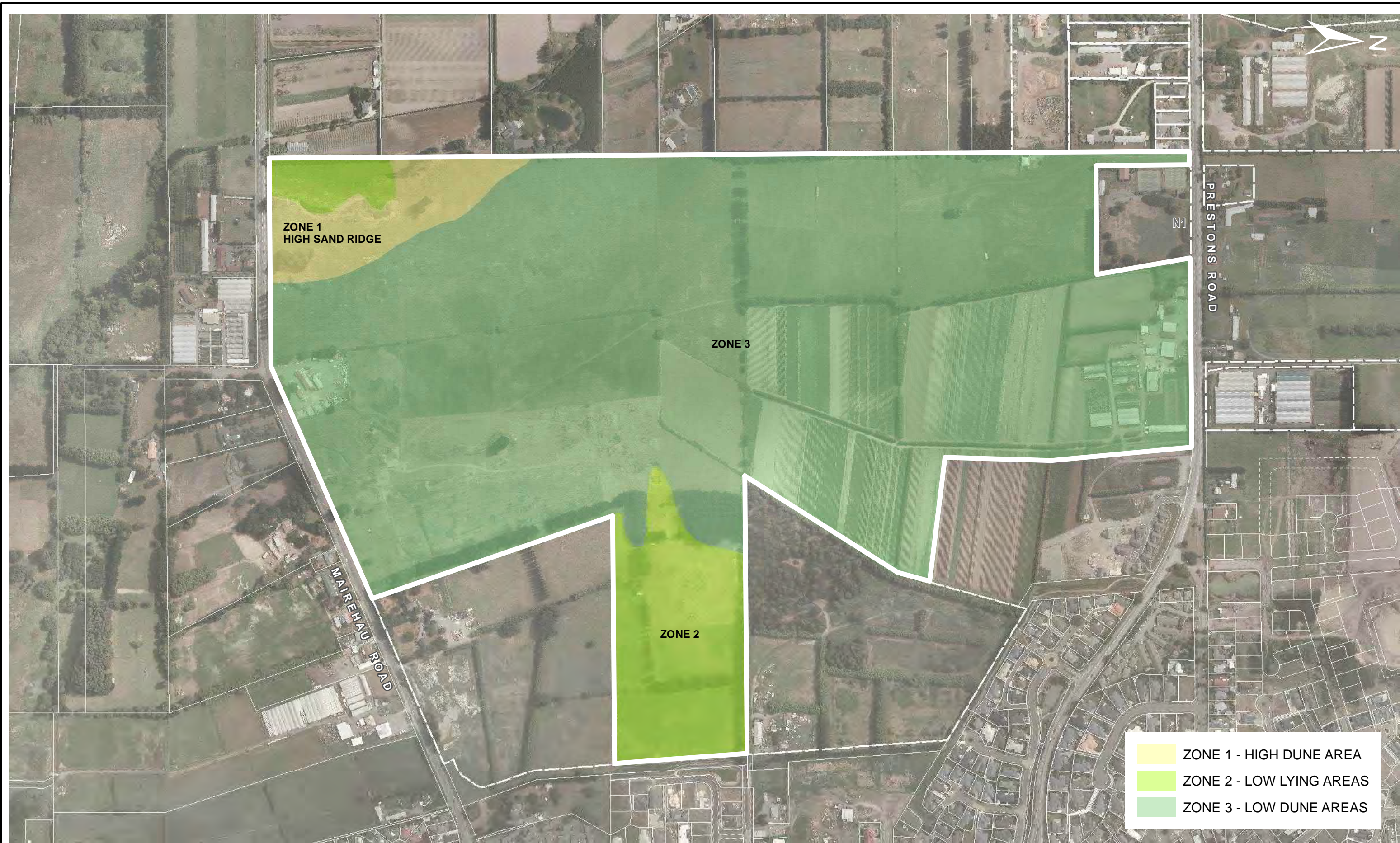


REV	DATE	REVISION DETAILS	APPROVED
A	5.13	ISSUE	TB

DRAWN	DESIGNED
R.Dawson	J.Muirson
CHECKED	
J.Kupec	
APPROVED	
	DATE
T. Browne	May 2013

PROJECT
PRESTONS SOUTH
TITLE
SITE LOCATION PLAN

PROJECT No.	235361
SCALE	1: 8000
DRAWING No.	FIG 1
SIZE	A3
REV	A



ZONE 1  
HIGH SAND RIDGE

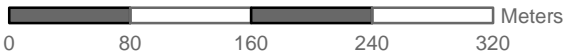
ZONE 3

ZONE 2

PRESTONS ROAD

MAIREHAU ROAD

- ZONE 1 - HIGH DUNE AREA
- ZONE 2 - LOW LYING AREAS
- ZONE 3 - LOW DUNE AREAS

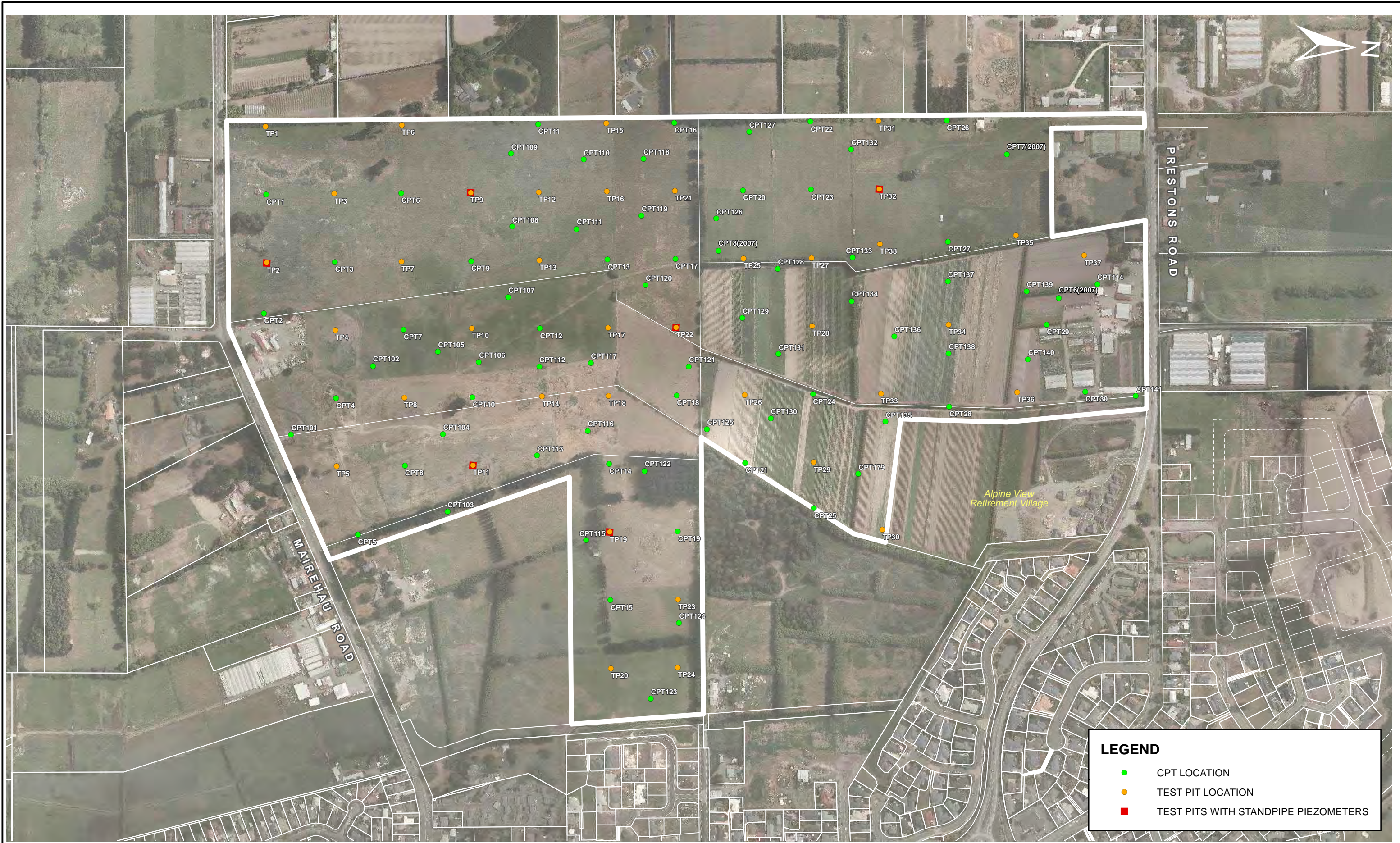


REV	DATE	REVISION DETAILS	APPROVED
A	05.13	ISSUE	TB

DRAWN	DESIGNED
R.Dawson	J.Muirson
CHECKED	
J. Kupec	
APPROVED	
DATE	
T.Browne	May 2013

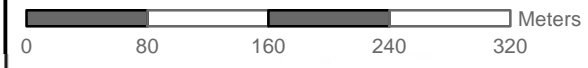
PROJECT
PRESTONS SOUTH
TITLE
GEOMORPHOLOGY

PROJECT No.	235361
SCALE	1:5000
SIZE	A3
DRAWING No.	FIG 2
REV	A



**LEGEND**

- CPT LOCATION
- TEST PIT LOCATION
- TEST PITS WITH STANDPIPE PIEZOMETERS

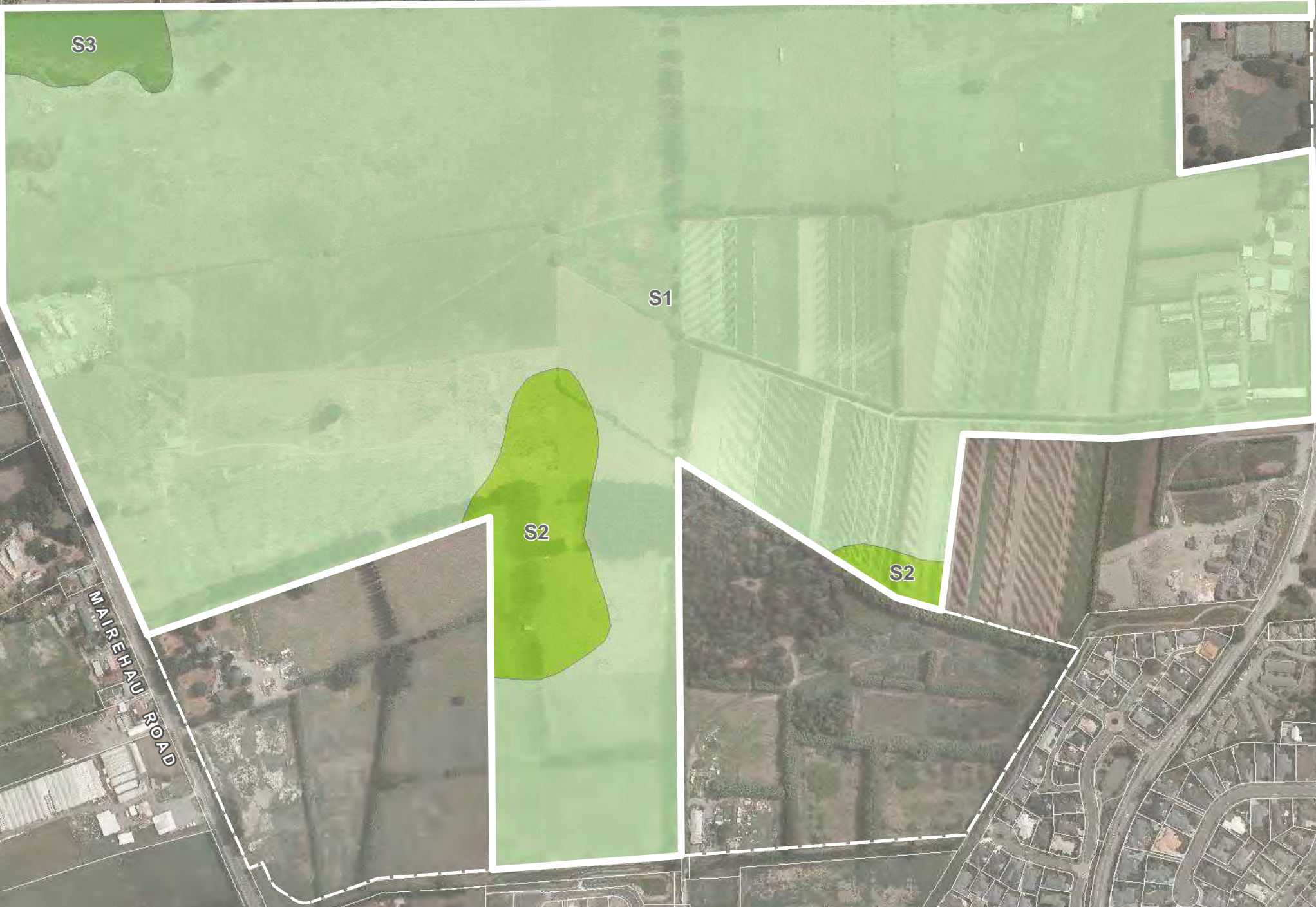


REV	DATE	REVISION DETAILS	APPROVED
A	5.13	ISSUE	TB

DRAWN	DESIGNED
R.Dawson	J.Muirson
CHECKED	
J.Kupec	
APPROVED	
DATE	
T.Browne	May 2013

PROJECT
PRESTONS SOUTH
TITLE
GEOTECHNICAL INVESTIGATIONS

PROJECT No.	235361
SCALE	1: 5000
DRAWING No.	FIG 3
SIZE	A3
REV	A



PRESTONS ROAD

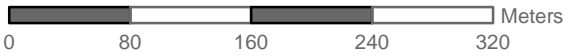
MAIREHAU ROAD

**LEGEND**

**PRESTONS SOUTH**

- AREA 1 - MAIN AREA
- AREA 2 - EAST SIDE
- AREA 3 - SOUTH-WEST CORNER

NOTE: ZONE BOUNDARIES ARE BASED ON GEOTECHNICAL TESTING INFORMATION AND SITE OBSERVATIONS AND ARE APPROXIMATE

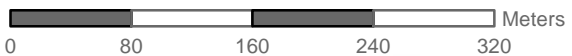
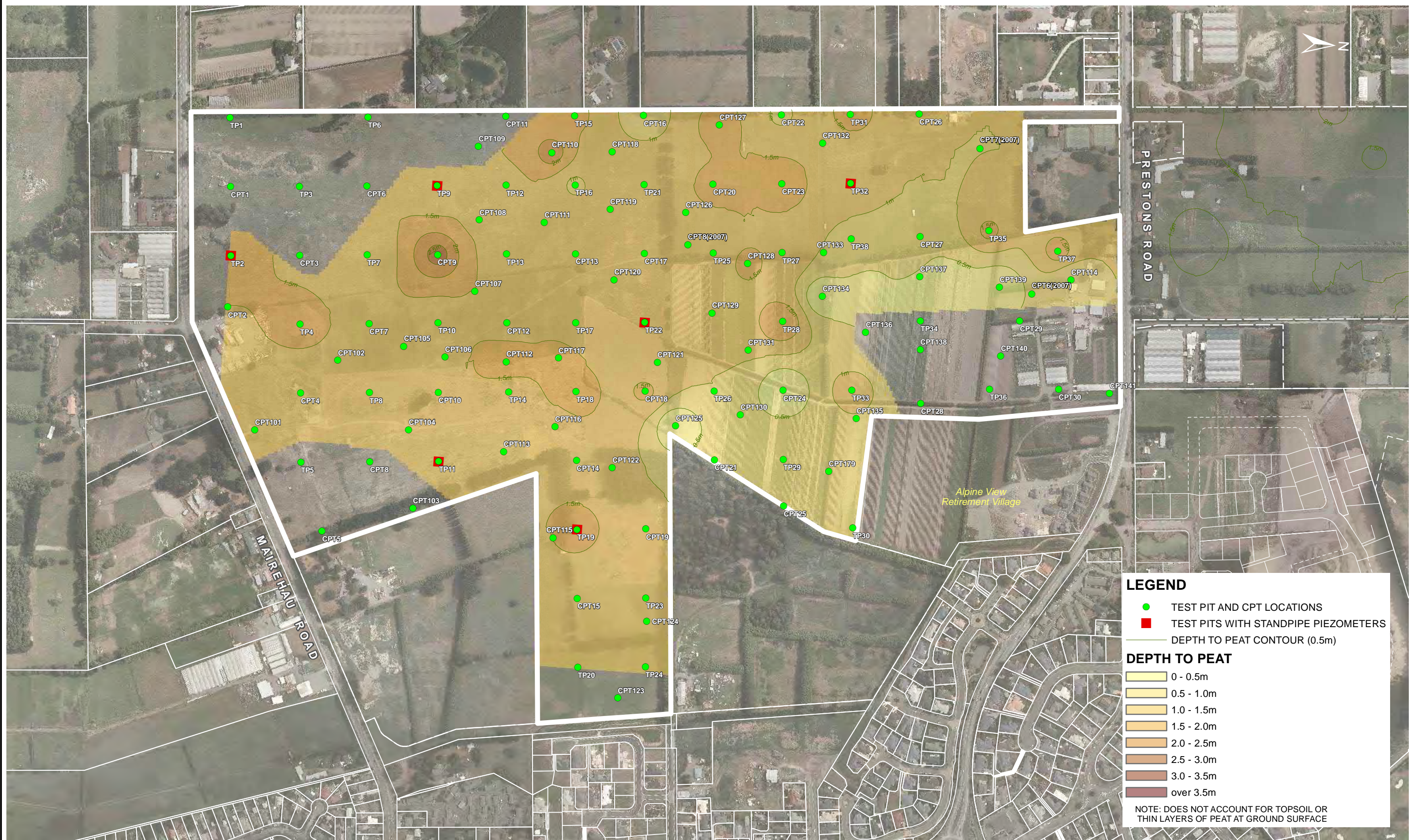


REV	DATE	REVISION DETAILS	APPROVED

DRAWN	DESIGNED
R.Dawson	J.Muirson
CHECKED	
J.Kupec	
APPROVED	
	DATE
T.Browne	May 2013

PROJECT
PRESTONS SOUTH
TITLE
GEOLOGICAL MODEL

PROJECT No.	235361
SCALE	1:5000
SIZE	A3
DRAWING No.	FIG 4
REV	A



**LEGEND**

- TEST PIT AND CPT LOCATIONS
- TEST PITS WITH STANDPIPE PIEZOMETERS
- DEPTH TO PEAT CONTOUR (0.5m)

**DEPTH TO PEAT**

- 0 - 0.5m
- 0.5 - 1.0m
- 1.0 - 1.5m
- 1.5 - 2.0m
- 2.0 - 2.5m
- 2.5 - 3.0m
- 3.0 - 3.5m
- over 3.5m

NOTE: DOES NOT ACCOUNT FOR TOPSOIL OR THIN LAYERS OF PEAT AT GROUND SURFACE

**NOTES** - PROPERTY DATA FROM LINZ JULY 2010  
 - AERIAL IMAGE FROM GOOGLE EARTH PRO

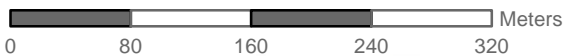
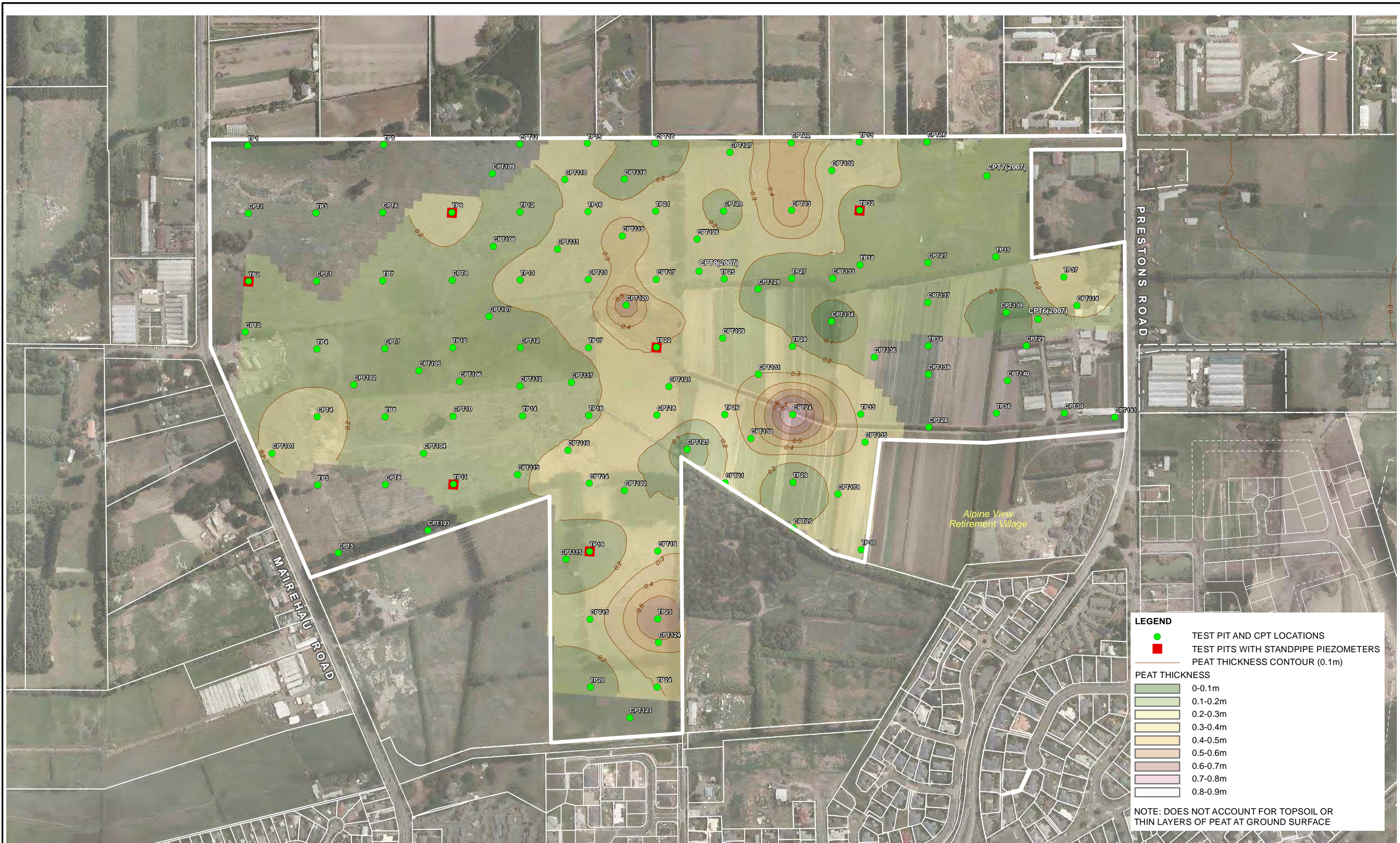


REV	DATE	REVISION DETAILS	APPROVED

DRAWN	DESIGNED
R.Dawson	J.Muirson
CHECKED	
J.Kupec	
APPROVED	
DATE	
T. Browne May 2013	

PROJECT
PRESTONS SOUTH
TITLE
DEPTH TO PEAT

PROJECT No.	235361
SCALE	1: 5000
DRAWING No.	FIG 5
SIZE	A3
REV	



**LEGEND**

- TEST PIT AND CPT LOCATIONS
- TEST PITS WITH STANDPIPE PIEZOMETERS
- PEAT THICKNESS CONTOUR (0.1m)

**PEAT THICKNESS**

0-0.1m
0.1-0.2m
0.2-0.3m
0.3-0.4m
0.4-0.5m
0.5-0.6m
0.6-0.7m
0.7-0.8m
0.8-0.9m

NOTE: DOES NOT ACCOUNT FOR TOPSOIL OR THIN LAYERS OF PEAT AT GROUND SURFACE



REV	DATE	REVISION DETAILS	APPROVED

DRAWN	DESIGNED
R.Dawson	J.Muirson
CHECKED	
J. Kupec	
APPROVED	
	DATE
T. Browne	May 2013

PROJECT
PRESTONS SOUTH
TITLE
PEAT THICKNESS

PROJECT No.	223488
SCALE	1: 5000
DRAWING No.	FIG 6
SIZE	A3
REV	



ECAN BOREHOLE

0 80 160 240 320 Meters



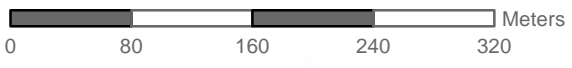
REV	DATE	REVISION DETAILS	APPROVED

DRAWN	DESIGNED
R.Dawson	J.Muirson
CHECKED	
J.Kupec	
APPROVED	
	DATE
T.Browne	May 2013

PROJECT
PRESTONS SOUTH
TITLE
ECAN BOREHOLE LOGS

PROJECT No.	223488
SCALE	1: 5000
DRAWING No.	FIG 7
SIZE	A3
REV	



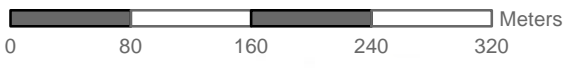
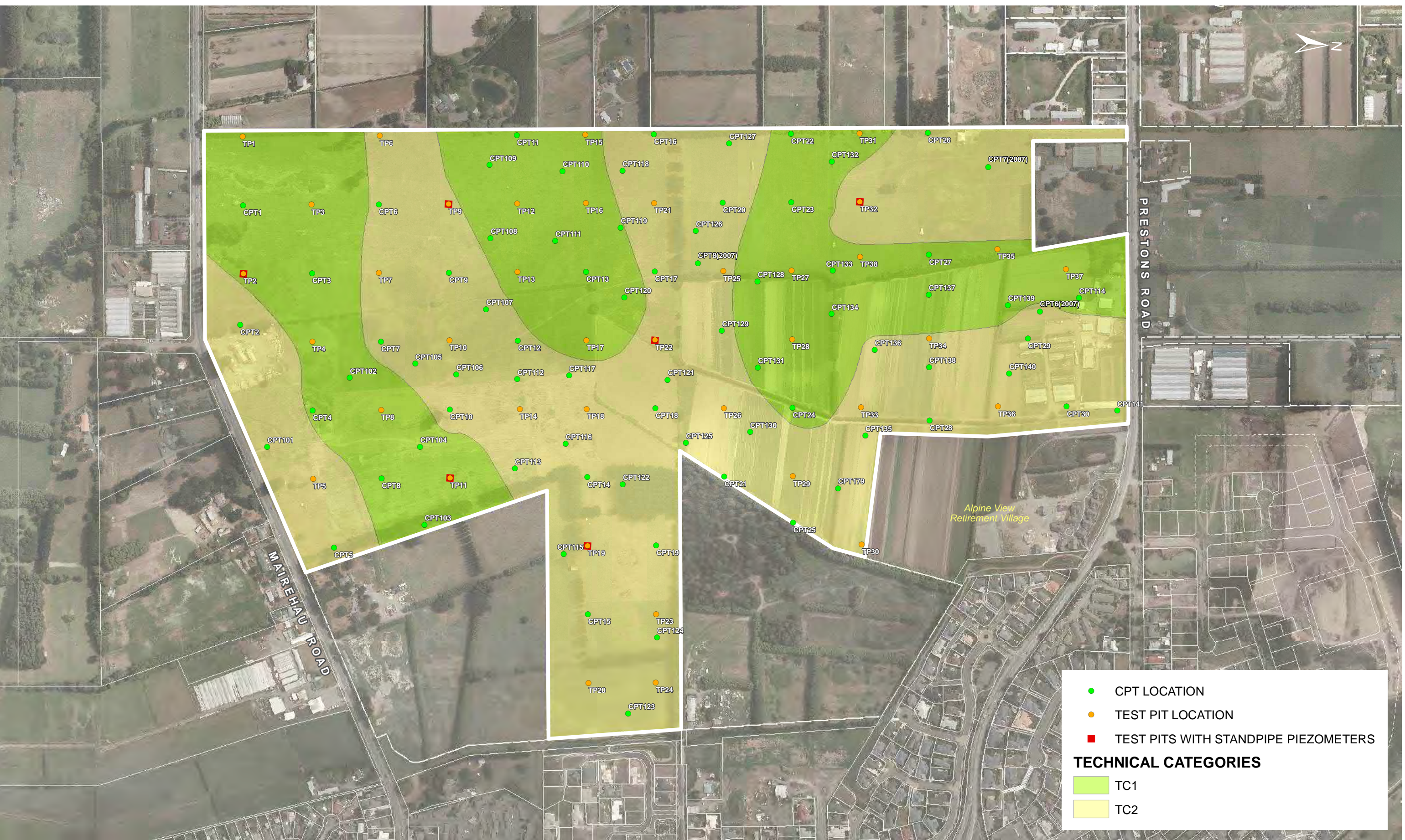


REV	DATE	REVISION DETAILS	APPROVED

DRAWN	DESIGNED
R.Dawson	J.Muirson
CHECKED	
J.Kupec	
APPROVED	
DATE	
T.Browne	May 2013

PROJECT
PRESTONS SOUTH
TITLE
IMPACT ROLLER SITE

PROJECT No.	223488
SCALE	1: 5000
DRAWING No.	FIG 8
SIZE	A3
REV	

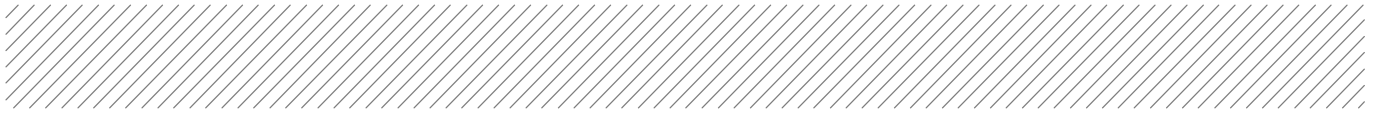


REV	DATE	REVISION DETAILS	APPROVED

DRAWN	DESIGNED
R.Dawson	J.Muirson
CHECKED	
J. Kupec	
APPROVED	
	DATE
T Browne	May 2013

PROJECT
PRESTONS SOUTH
TITLE
TECHNICAL CATEGORIES

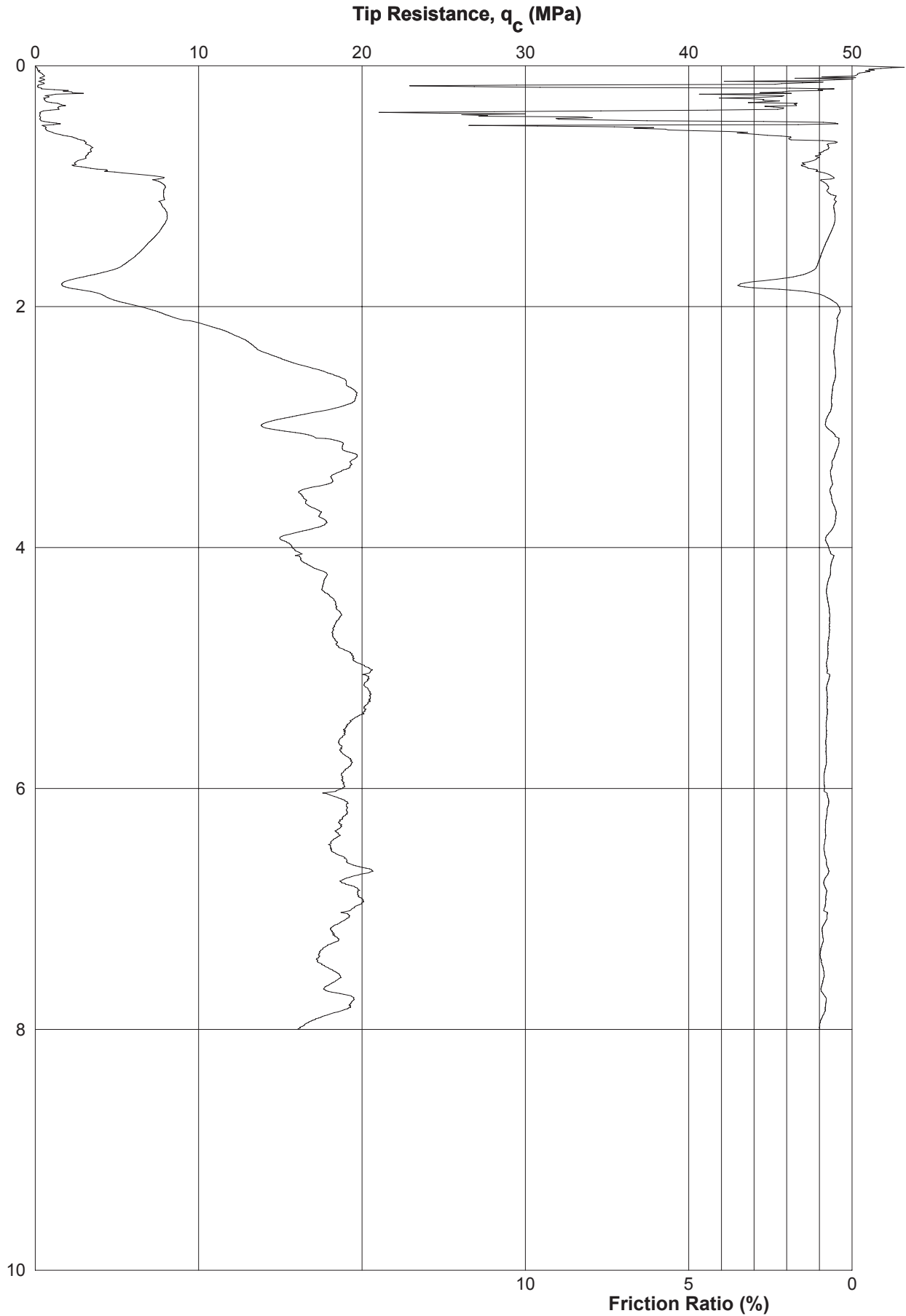
PROJECT No.	223488
SCALE	1: 5000
DRAWING No.	FIG 9
SIZE	A3
REV	



# Appendix B

## 2007 CPT Logs

# STANDARD CONE PENETROMETER TEST (CPT) REPORT



Job No: 4659

CPT No: 006

Project: Marshlands Area Rezoning

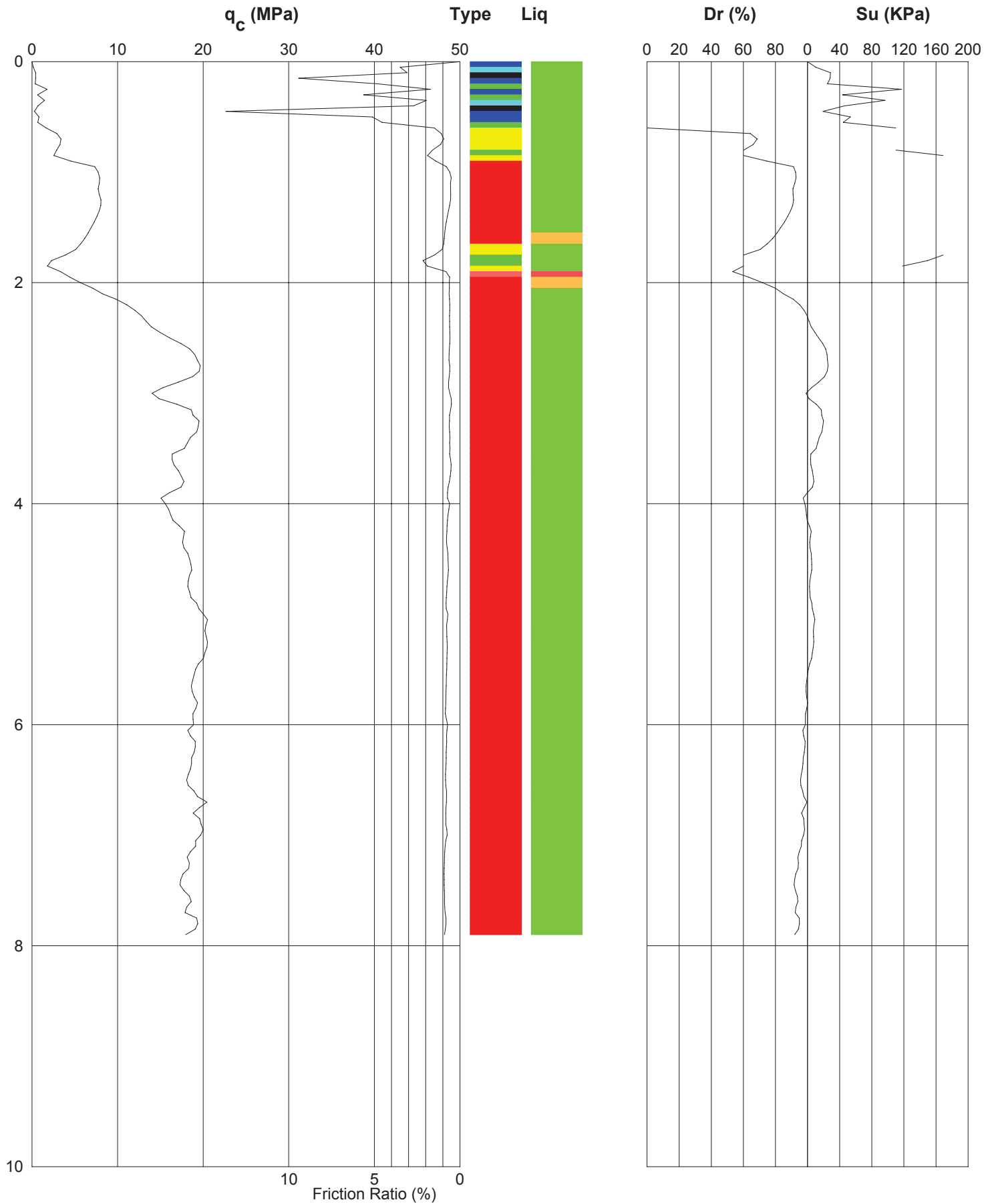
Location: Marshlands Rd CHCH

Date: 30/04/07

Operator: S Mortimer

Remark: Dummy Probed 0.5mbgl

# STANDARD CONE PENETROMETER TEST (CPT) INTERPRETIVE REPORT



Job No: 4659

CPT No: 006

Project: Marshlands Area Rezoning

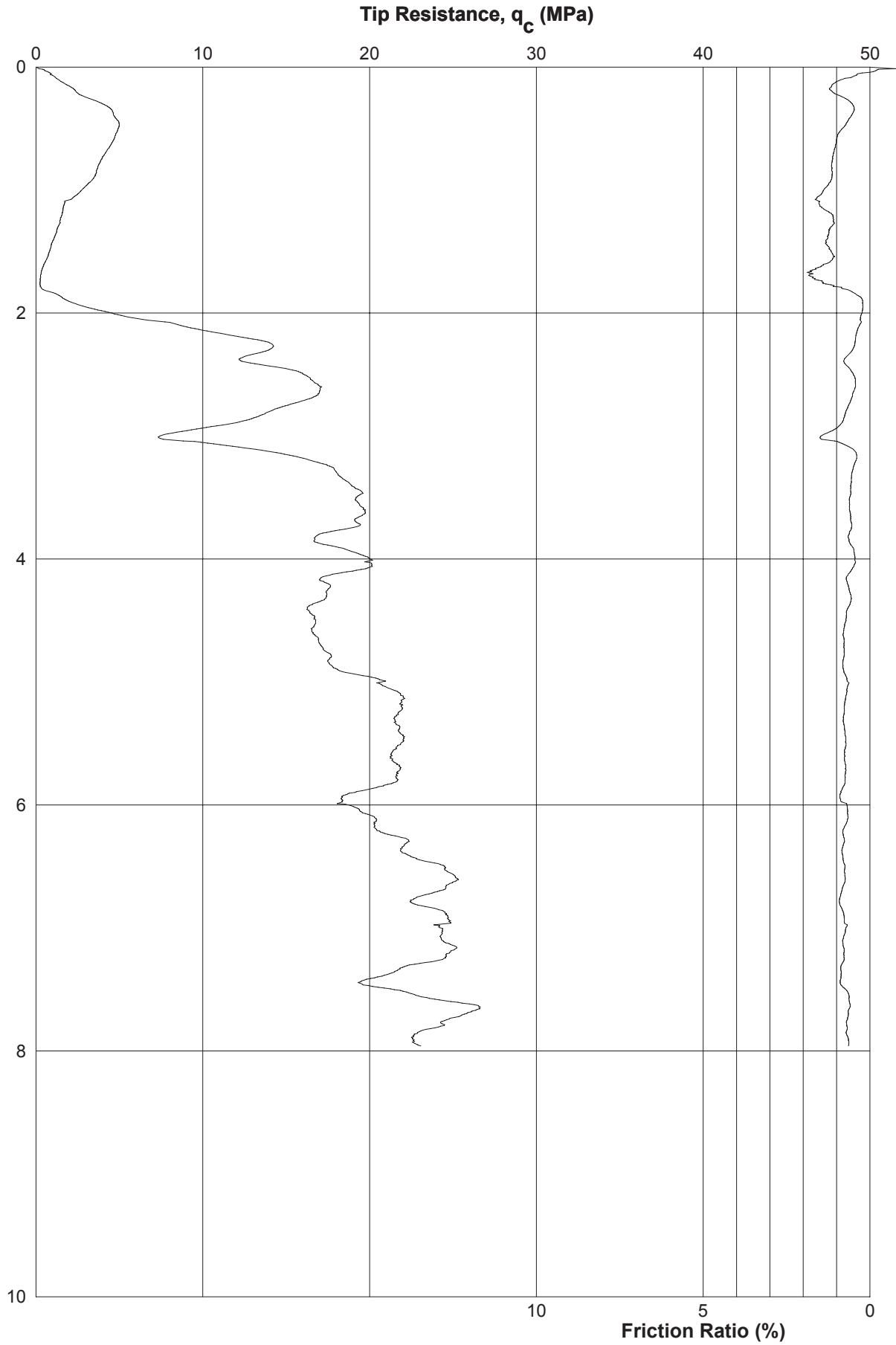
Location: Marshlands Rd CHCH

Date: 30/04/07

Operator: S Mortimer

Remark: Dummy Probed 0.5mbgl

# STANDARD CONE PENETROMETER TEST (CPT) REPORT



Job No: 4659

CPT No: 007

Project: Marshlands Area Rezoning

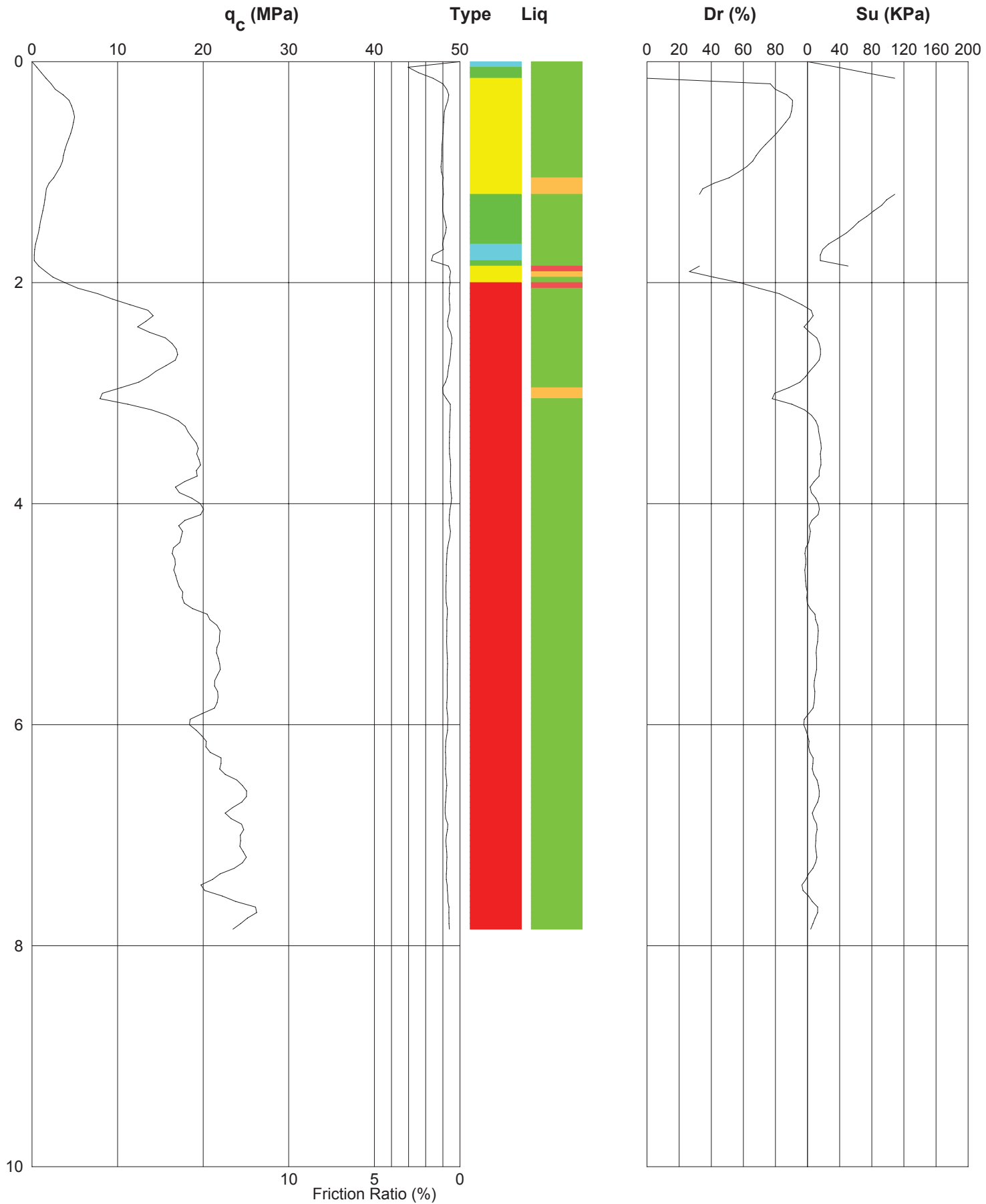
Location: Marshlands Rd CHCH

Date: 30/04/07

Operator: S Mortimer

Remark:

# STANDARD CONE PENETROMETER TEST (CPT) INTERPRETIVE REPORT



Job No: 4659

CPT No: 007

Project: Marshlands Area Rezoning

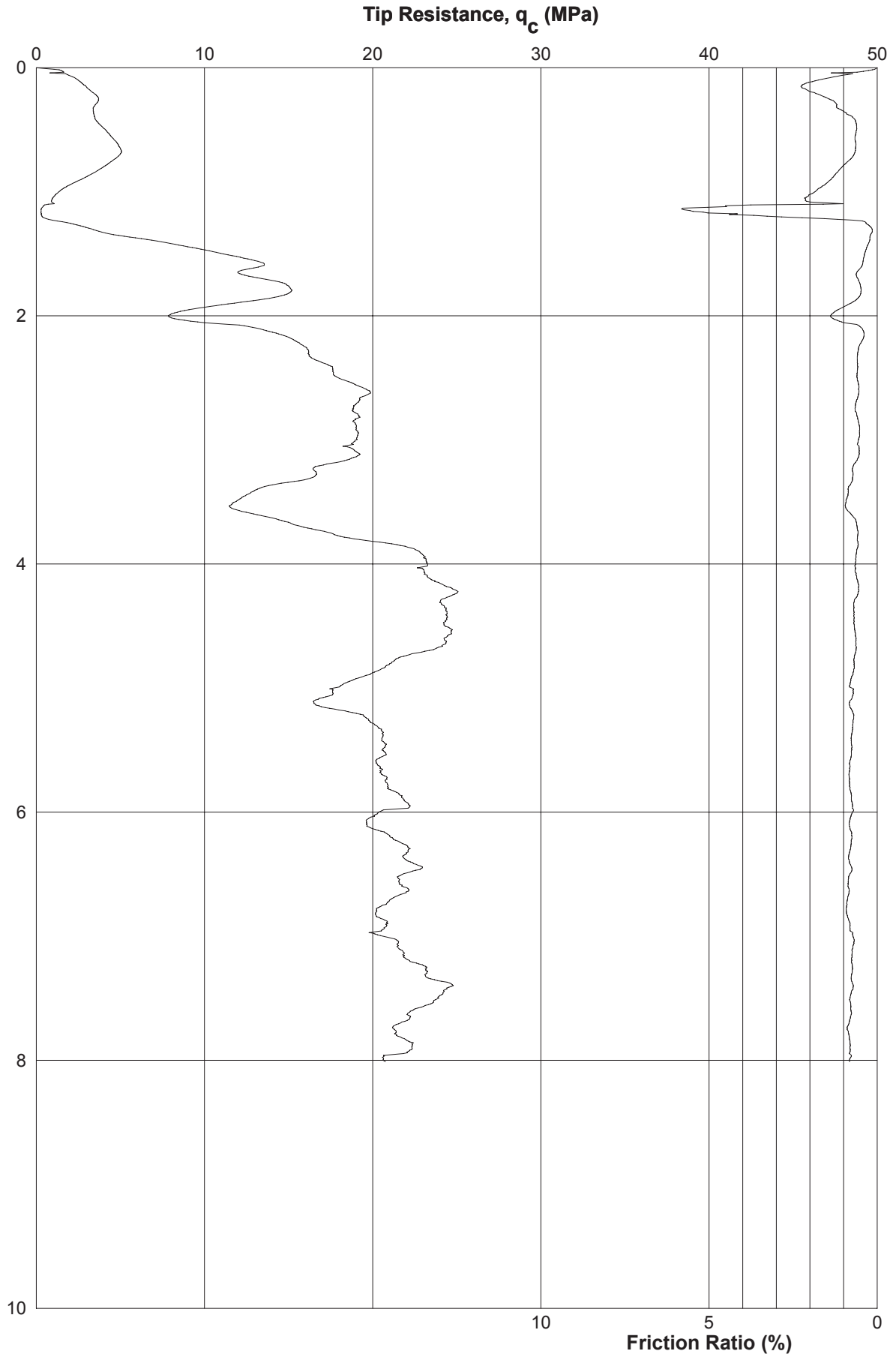
Location: Marshlands Rd CHCH

Date: 30/04/07

Operator: S Mortimer

Remark:

# STANDARD CONE PENETROMETER TEST (CPT) REPORT



Job No: 4659

CPT No: 008

Project: Marshlands Area Rezoning

Location: Marshlands Rd CHCH

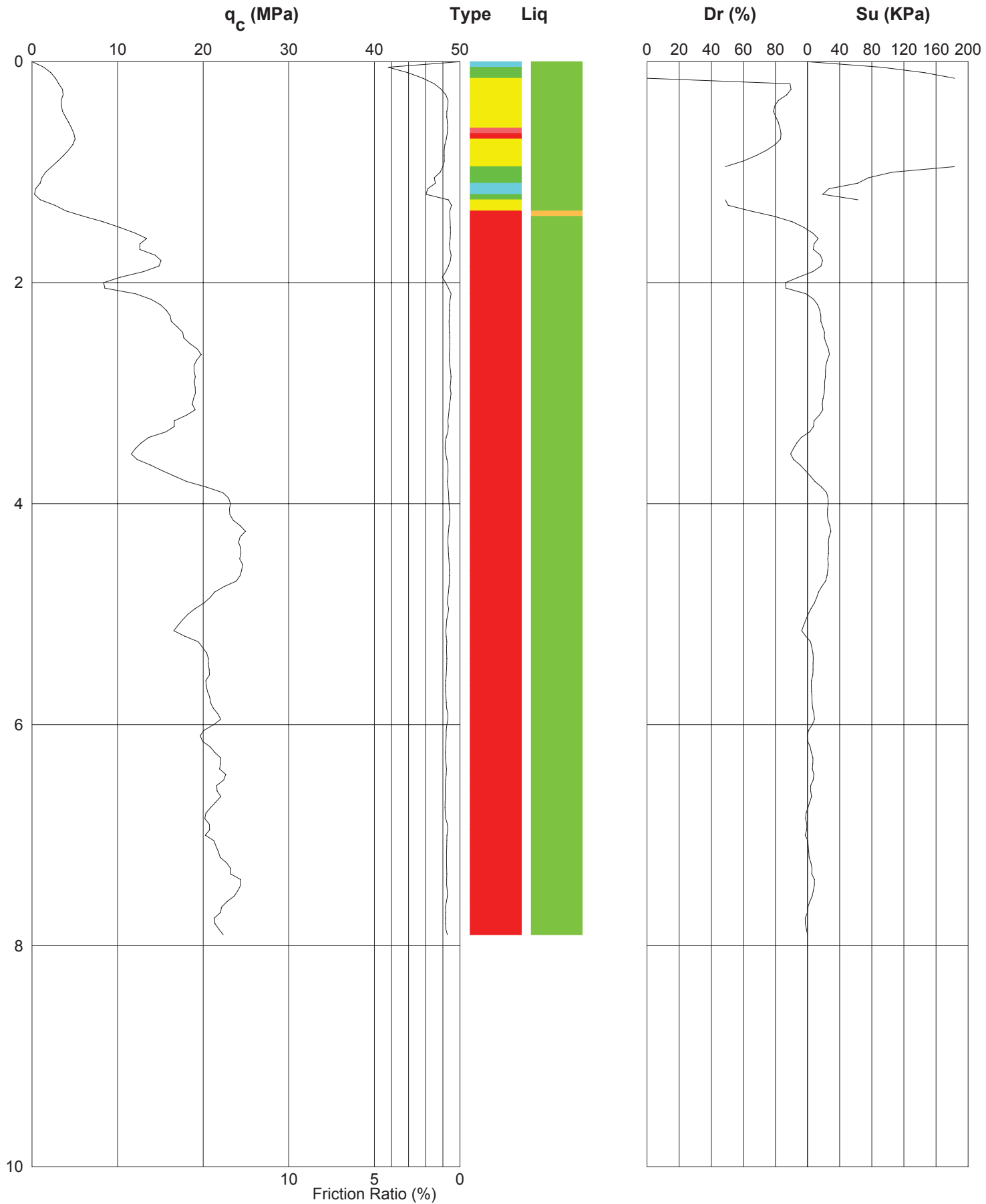
Date: 30/04/07

Operator: D Keown

Remark:



# STANDARD CONE PENETROMETER TEST (CPT) INTERPRETIVE REPORT



Job No: 4659

CPT No: 008

Project: Marshlands Area Rezoning

Location: Marshlands Rd CHCH

Date: 30/04/07

Operator: D Keown

Remark: