



Title Plan - LT 464075

Survey Number LT 464075
Surveyor Reference 224926
Surveyor Melisa Jayne Crowe
Survey Firm Aurecon (Christchurch)
Surveyor Declaration

Survey Details

Dataset Description Lots 1 - 90,500,503,520,522,529,700,701,800,801 & 1000 being subdivision of Part Section 1 SO 19540, Part Sections 2 & 3 SO 18584, Part Section 1 SO 19340 and Part Lot 1 DP 75811

Status Initiated

Land District Canterbury **Survey Class** Class A

Submitted Date **Survey Approval Date**
Deposit Date

Territorial Authorities

Selwyn District

Comprised In

CT 264420

Created Parcels

Parcels	Parcel Intent	Area	CT Reference
Lot 76 Deposited Plan 464075	Fee Simple Title	0.0450 Ha	616037
Lot 78 Deposited Plan 464075	Fee Simple Title	0.0485 Ha	616038
Lot 79 Deposited Plan 464075	Fee Simple Title	0.0410 Ha	616039
Lot 80 Deposited Plan 464075	Fee Simple Title	0.0415 Ha	616040
Lot 81 Deposited Plan 464075	Fee Simple Title	0.0381 Ha	616041
Lot 82 Deposited Plan 464075	Fee Simple Title	0.0381 Ha	616042
Lot 83 Deposited Plan 464075	Fee Simple Title	0.0418 Ha	616043
Lot 1 Deposited Plan 464075	Fee Simple Title	0.0843 Ha	616044
Lot 2 Deposited Plan 464075	Fee Simple Title	0.0630 Ha	616045
Lot 3 Deposited Plan 464075	Fee Simple Title	0.0664 Ha	616046
Lot 4 Deposited Plan 464075	Fee Simple Title	0.0664 Ha	616047
Lot 5 Deposited Plan 464075	Fee Simple Title	0.0665 Ha	616048
Lot 6 Deposited Plan 464075	Fee Simple Title	0.0694 Ha	616049
Lot 7 Deposited Plan 464075	Fee Simple Title	0.0667 Ha	616050
Area A Deposited Plan 464075	Easement		
Lot 8 Deposited Plan 464075	Fee Simple Title	0.0696 Ha	616051
Lot 9 Deposited Plan 464075	Fee Simple Title	0.0667 Ha	616052
Lot 10 Deposited Plan 464075	Fee Simple Title	0.0765 Ha	616053



Title Plan - LT 464075

Created Parcels

Parcels	Parcel Intent	Area	CT Reference
Lot 500 Deposited Plan 464075	Vesting on Deposit for Recreation Reserve (Territorial Authority)	0.0590 Ha	616054
Lot 529 Deposited Plan 464075	Vesting on Deposit for Local Purpose Reserve	0.0436 Ha	616055
Lot 11 Deposited Plan 464075	Fee Simple Title	0.0865 Ha	616056
Lot 12 Deposited Plan 464075	Fee Simple Title	0.0595 Ha	616057
Lot 13 Deposited Plan 464075	Fee Simple Title	0.0596 Ha	616058
Lot 14 Deposited Plan 464075	Fee Simple Title	0.0624 Ha	616059
Lot 15 Deposited Plan 464075	Fee Simple Title	0.0693 Ha	616060
Area B Deposited Plan 464075	Easement		
Lot 16 Deposited Plan 464075	Fee Simple Title	0.0582 Ha	616061
Lot 17 Deposited Plan 464075	Fee Simple Title	0.0678 Ha	616062
Lot 18 Deposited Plan 464075	Fee Simple Title	0.0701 Ha	616063
Lot 19 Deposited Plan 464075	Fee Simple Title	0.0707 Ha	616064
Lot 20 Deposited Plan 464075	Fee Simple Title	0.0926 Ha	616065
Lot 21 Deposited Plan 464075	Fee Simple Title	0.0986 Ha	616066
Lot 22 Deposited Plan 464075	Fee Simple Title	0.0909 Ha	616067
Lot 23 Deposited Plan 464075	Fee Simple Title	0.0893 Ha	616068
Lot 24 Deposited Plan 464075	Fee Simple Title	0.0790 Ha	616069
Lot 25 Deposited Plan 464075	Fee Simple Title	0.0694 Ha	616070
Lot 26 Deposited Plan 464075	Fee Simple Title	0.0692 Ha	616071
Lot 27 Deposited Plan 464075	Fee Simple Title	0.0692 Ha	616072
Lot 28 Deposited Plan 464075	Fee Simple Title	0.0692 Ha	616073
Lot 501 Deposited Plan 464075	Vesting on Deposit for Local Purpose Reserve	0.0346 Ha	616074
Lot 29 Deposited Plan 464075	Fee Simple Title	0.0692 Ha	616075
Lot 30 Deposited Plan 464075	Fee Simple Title	0.0709 Ha	616076
Lot 31 Deposited Plan 464075	Fee Simple Title	0.0709 Ha	616077
Lot 32 Deposited Plan 464075	Fee Simple Title	0.0709 Ha	616078
Lot 33 Deposited Plan 464075	Fee Simple Title	0.0610 Ha	616079
Lot 34 Deposited Plan 464075	Fee Simple Title	0.0610 Ha	616080
Lot 35 Deposited Plan 464075	Fee Simple Title	0.0466 Ha	616081
Lot 36 Deposited Plan 464075	Fee Simple Title	0.0434 Ha	616082
Lot 37 Deposited Plan 464075	Fee Simple Title	0.0442 Ha	616083
Lot 38 Deposited Plan 464075	Fee Simple Title	0.0466 Ha	616084
Lot 39 Deposited Plan 464075	Fee Simple Title	0.0610 Ha	616085
Lot 40 Deposited Plan 464075	Fee Simple Title	0.0709 Ha	616086
Lot 41 Deposited Plan 464075	Fee Simple Title	0.0709 Ha	616087
Lot 42 Deposited Plan 464075	Fee Simple Title	0.0709 Ha	616088



Title Plan - LT 464075

Created Parcels

Parcels	Parcel Intent	Area	CT Reference
Lot 43 Deposited Plan 464075	Fee Simple Title	0.0692 Ha	616089
Lot 520 Deposited Plan 464075	Vesting on Deposit for Local Purpose Reserve	0.0346 Ha	616090
Lot 44 Deposited Plan 464075	Fee Simple Title	0.0692 Ha	616091
Lot 45 Deposited Plan 464075	Fee Simple Title	0.0692 Ha	616092
Lot 46 Deposited Plan 464075	Fee Simple Title	0.0692 Ha	616093
Lot 47 Deposited Plan 464075	Fee Simple Title	0.0795 Ha	616094
Lot 48 Deposited Plan 464075	Fee Simple Title	0.0790 Ha	616095
Lot 49 Deposited Plan 464075	Fee Simple Title	0.0790 Ha	616096
Lot 50 Deposited Plan 464075	Fee Simple Title	0.0790 Ha	616097
Lot 51 Deposited Plan 464075	Fee Simple Title	0.0790 Ha	616098
Lot 52 Deposited Plan 464075	Fee Simple Title	0.0774 Ha	616099
Lot 53 Deposited Plan 464075	Fee Simple Title	0.0675 Ha	616100
Lot 54 Deposited Plan 464075	Fee Simple Title	0.0675 Ha	616101
Lot 55 Deposited Plan 464075	Fee Simple Title	0.0675 Ha	616102
Lot 502 Deposited Plan 464075	Vesting on Deposit for Local Purpose Reserve	0.0337 Ha	616103
Lot 56 Deposited Plan 464075	Fee Simple Title	0.0675 Ha	616104
Lot 57 Deposited Plan 464075	Fee Simple Title	0.0708 Ha	616105
Lot 58 Deposited Plan 464075	Fee Simple Title	0.0708 Ha	616106
Lot 59 Deposited Plan 464075	Fee Simple Title	0.0712 Ha	616107
Lot 60 Deposited Plan 464075	Fee Simple Title	0.0570 Ha	616108
Lot 61 Deposited Plan 464075	Fee Simple Title	0.0535 Ha	616109
Lot 62 Deposited Plan 464075	Fee Simple Title	0.0448 Ha	616110
Lot 63 Deposited Plan 464075	Fee Simple Title	0.0390 Ha	616111
Lot 64 Deposited Plan 464075	Fee Simple Title	0.0376 Ha	616112
Lot 65 Deposited Plan 464075	Fee Simple Title	0.0363 Ha	616113
Lot 66 Deposited Plan 464075	Fee Simple Title	0.0570 Ha	616114
Lot 67 Deposited Plan 464075	Fee Simple Title	0.0712 Ha	616115
Lot 68 Deposited Plan 464075	Fee Simple Title	0.0708 Ha	616116
Lot 69 Deposited Plan 464075	Fee Simple Title	0.0708 Ha	616117
Lot 70 Deposited Plan 464075	Fee Simple Title	0.0675 Ha	616118
Lot 522 Deposited Plan 464075	Vesting on Deposit for Local Purpose Reserve	0.0337 Ha	616119
Lot 71 Deposited Plan 464075	Fee Simple Title	0.0675 Ha	616120
Lot 72 Deposited Plan 464075	Fee Simple Title	0.0675 Ha	616121
Lot 73 Deposited Plan 464075	Fee Simple Title	0.0675 Ha	616122
Lot 74 Deposited Plan 464075	Fee Simple Title	0.0774 Ha	616123
Lot 75 Deposited Plan 464075	Fee Simple Title	0.0788 Ha	616124



Title Plan - LT 464075

Created Parcels

Parcels	Parcel Intent	Area	CT Reference
Lot 77 Deposited Plan 464075	Fee Simple Title	0.0447 Ha	616125
Lot 503 Deposited Plan 464075	Vesting on Deposit for Local Purpose Reserve	0.0293 Ha	616126
Lot 84 Deposited Plan 464075	Fee Simple Title	0.0450 Ha	616127
Lot 85 Deposited Plan 464075	Fee Simple Title	0.0498 Ha	616128
Lot 86 Deposited Plan 464075	Fee Simple Title	0.0381 Ha	616129
Lot 87 Deposited Plan 464075	Fee Simple Title	0.0381 Ha	616130
Lot 88 Deposited Plan 464075	Fee Simple Title	0.0440 Ha	616131
Lot 89 Deposited Plan 464075	Fee Simple Title	0.0440 Ha	616132
Lot 90 Deposited Plan 464075	Fee Simple Title	0.0516 Ha	616133
Area C Deposited Plan 464075	Easement		
Area D Deposited Plan 464075	Easement		
Lot 800 Deposited Plan 464075	Vesting on Deposit for Road	1.1577 Ha	
Lot 801 Deposited Plan 464075	Vesting on Deposit for Road	1.1383 Ha	
Lot 1000 Deposited Plan 464075	Fee Simple Title	33.9005 Ha	616134
Lot 700 Deposited Plan 464075	Fee Simple Title	0.0005 Ha	616135
Lot 701 Deposited Plan 464075	Fee Simple Title	0.0005 Ha	616136
Area E Deposited Plan 464075	Easement		
Area F Deposited Plan 464075	Easement		
Area G Deposited Plan 464075	Easement		
Area H Deposited Plan 464075	Easement		
Area I Deposited Plan 464075	Easement		
Area J Deposited Plan 464075	Easement		
Area K Deposited Plan 464075	Easement		
Area L Deposited Plan 464075	Easement		
Total Area		42.1974 Ha	

Schedule / Memorandum

Land Registration District	Plan Number	Surveyor Ref
Canterbury	DP 464075	224926

Territorial Authority (the Council)	Council Ref
Selwyn District Council	125017

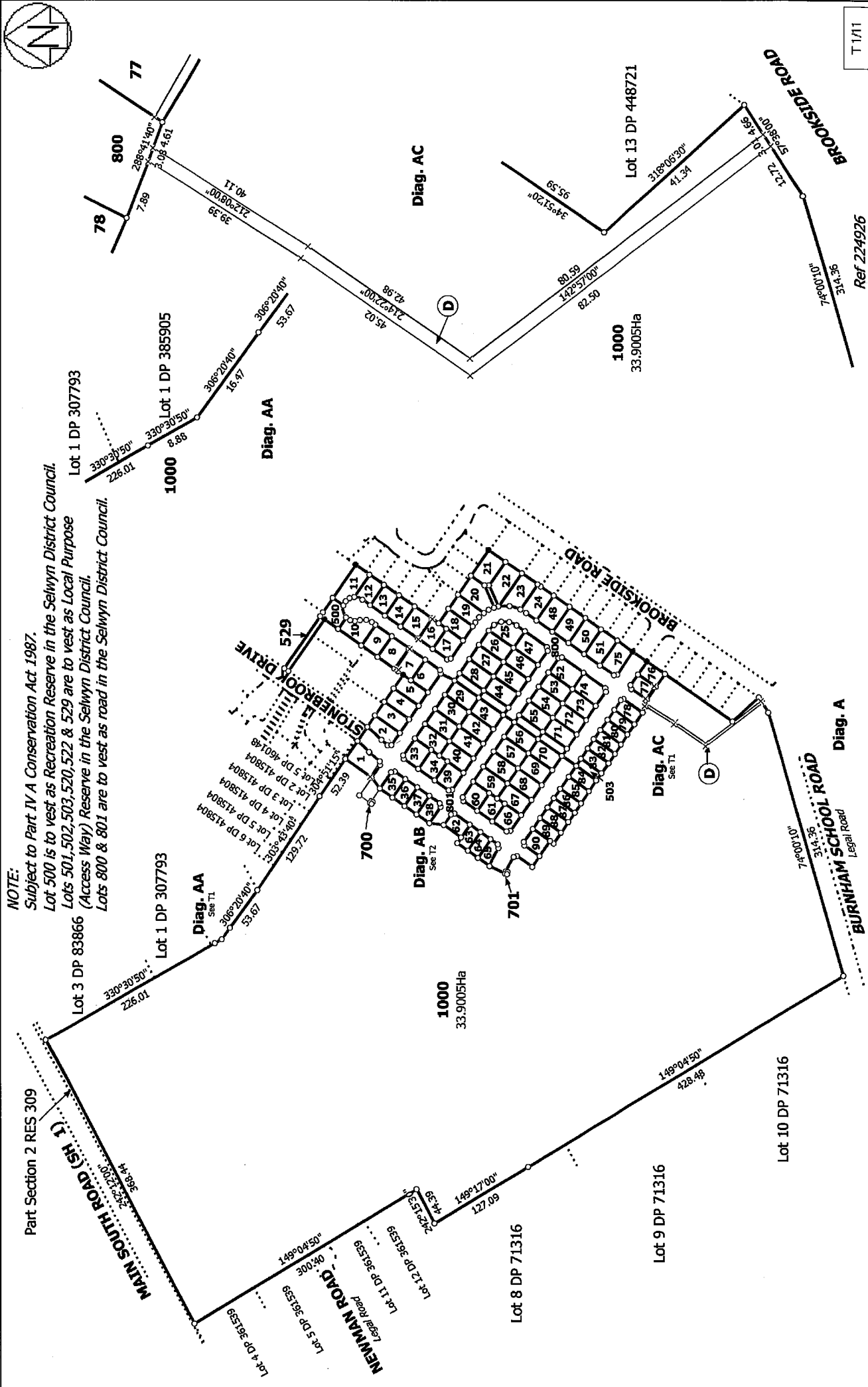
MEMORANDUM OF EASEMENTS			
Purpose	Servient Tenement		Dominant Tenement
	Lot No	Shown	
Right of Way, Right to Drain Water & Sewage, Right to Convey Water, Electricity, Telecommunications and Computer Media	21	E	22
Right to Drain Sewage	77	F	76
Right of Way	21	E	20

MEMORANDUM OF EASEMENTS IN GROSS			
Purpose	Servient Tenement		Grantee
	Lot No	Shown	
Right to Convey Electricity	1000	C	Orion New Zealand Limited
Right to Drain Water	7	A	Selwyn District Council
	16	B	
	1	G	
Right to Drain Sewage	1000	D	Selwyn District Council

SCHEDULE OF EASEMENTS IN GROSS			
Purpose	Servient Tenement		Grantee
	Lot No	Shown	
Right to Convey Electricity	501	H	Orion New Zealand Limited
	520	I	
	502	J	
	522	K	
	503	L	

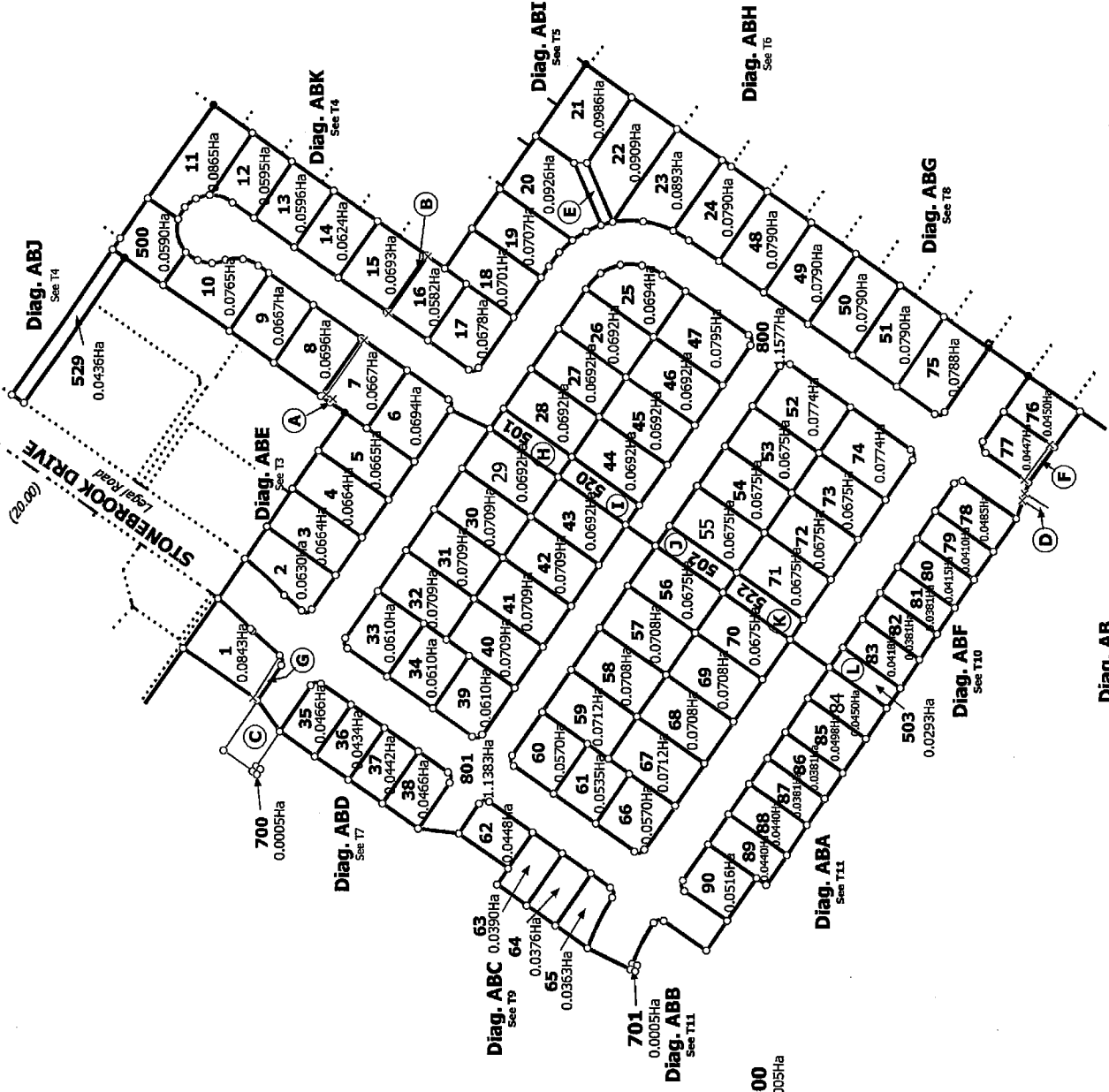
NOTES:

- Lot 800 and 801 are to vest as Road in the Selwyn District Council.
- Lot 500 is to vest as Recreation Reserve in the Selwyn District Council
- Lots 501-503, 520, 522 and 529 are to vest as Local Purpose (Access Way) Reserve in the Selwyn District Council.
- Subject to Part IV A Conservation Act 1987.
- Existing Right to Convey Water in Gross Easement shown as E on DP 71316 over Part Section 2 SO 18584 and also described in document T A362282.1 on CT 264420 is to be extinguished.
- Existing Right to Convey Water in Gross Easement shown as A on DP 77714 over Part Lot 1 DP 75811 and shown as H on DP 71316 over Part Section 1 SO 19340 & also described in document T A369483.2 on CT 264420 is to be extinguished.



NOTE:
 Subject to Part IV A Conservation Act 1987.
 Lot 500 is to vest as Recreation Reserve in the Selwyn District Council.
 Lots 501, 502, 503, 520, 522 & 529 are to vest as Local Purpose (Access Way) Reserve in the Selwyn District Council.
 Lots 800 & 801 are to vest as road in the Selwyn District Council.

Land District: Canterbury	Surveyor: Melissa Jayne Crowe Firm: Aurecon (Christchurch)	Title Plan LT 464075 DRAFT	Ref 224926 T 1/11
Lots 1 - 90, 500, 503, 520, 522, 529, 700, 701, 800, 801 & 1000 being subdivision of Part Section 1 SO 19540, Part Sections 2 & 3 SO 18584, Part Section 1 SO 19340 and Part Lot 1 DP 75811		Digitally Generated Plan Generated on: 29/04/2013 4:49pm Page 6 of 15	



Diag. AB

Ref 224926

T 2/11

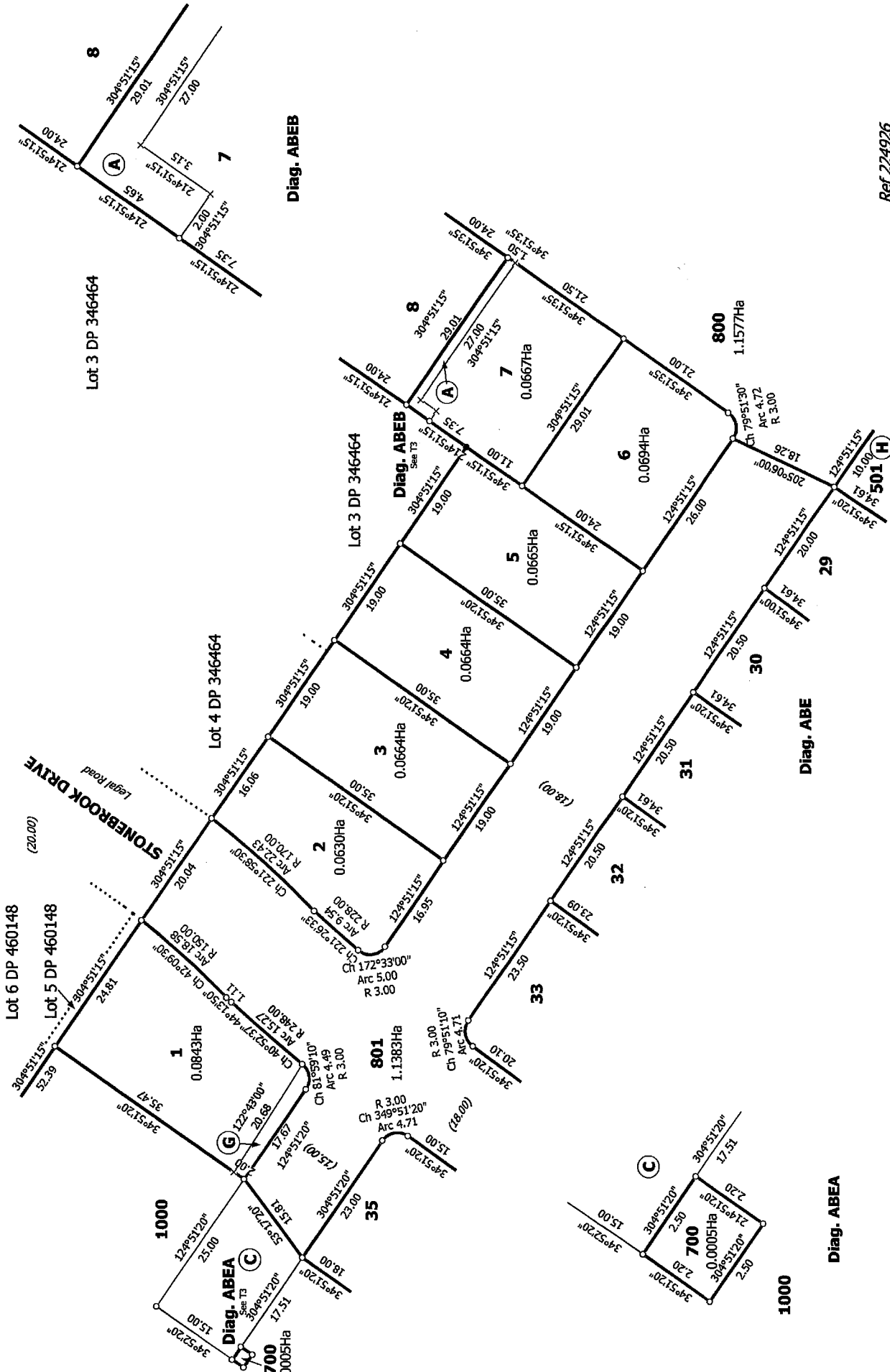
Land District: Canterbury

Digitally Generated Plan
Generated on: 28/04/2013 4:45pm, Page 7 of 16

Lots 1 - 90, 500, 503, 520, 522, 529, 700, 701, 800, 801 & 1000 being subdivision of Part Section 1 SO 19540, Part Sections 2 & 3 SO 18584, Part Section 1 SO 19340 and Part Lot 1 DP 75811

Surveyor: Melisa Jayne Crowe
Firm: Aurecon (Christchurch)

Title Plan
LT 464075
DRAFT



T 3/11

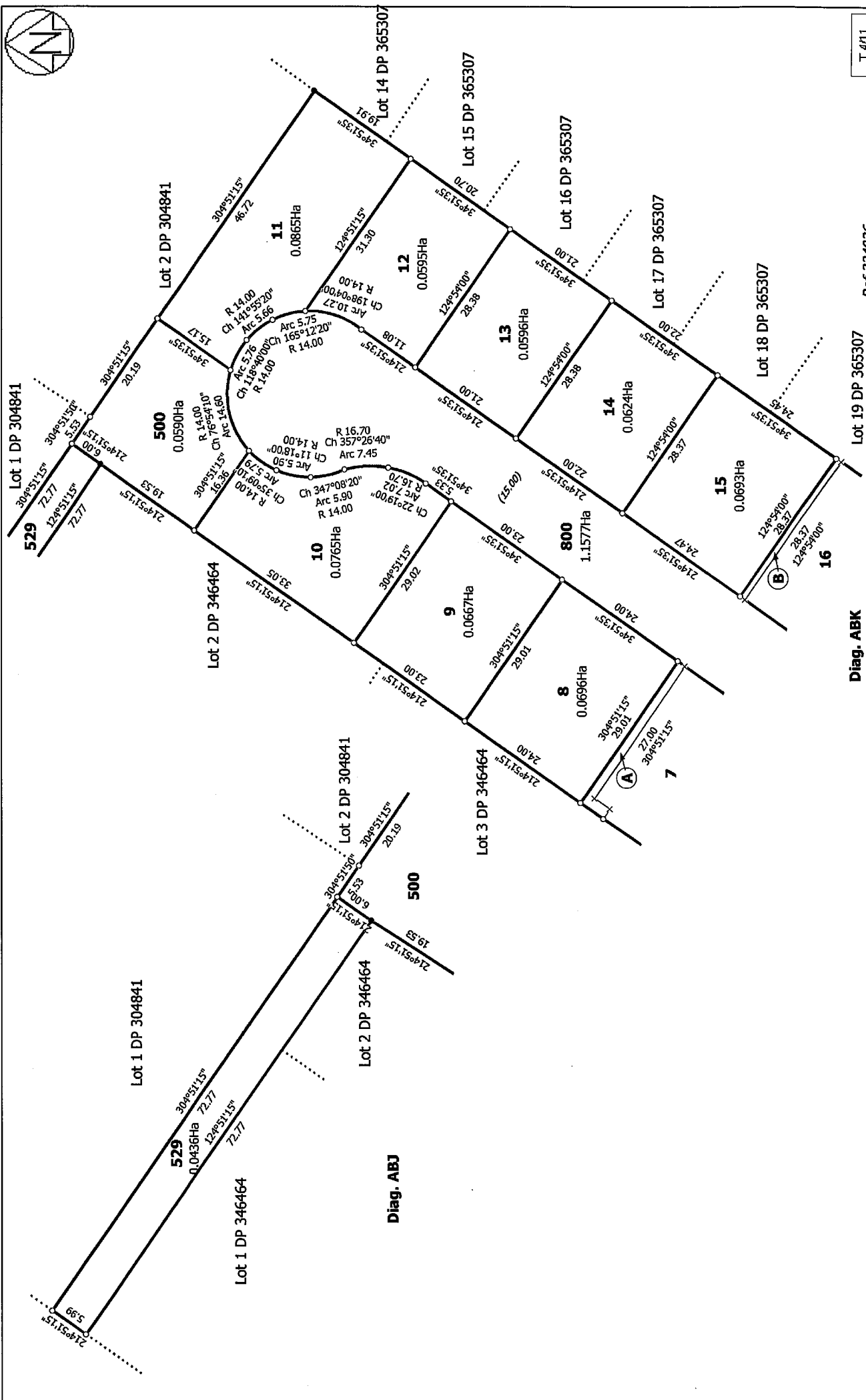
Ref 224926

Title Plan
LT 464075
DRAFT

Surveyor: Melisa Jayne Crowe
Firm: Aurecon (Christchurch)

Lots 1 - 90, 500, 503, 520, 522, 529, 700, 701, 800, 801 & 1000 being subdivision of
Part Section 1 SO 19340, Part Sections 2 & 3 SO 18584, Part Section 1 SO 19340
and Part Lot 1 DP 75811

Land District: Canterbury
Digitally Generated Plan
Generated on: 29/04/2013 4:49pm Page 8 of 15

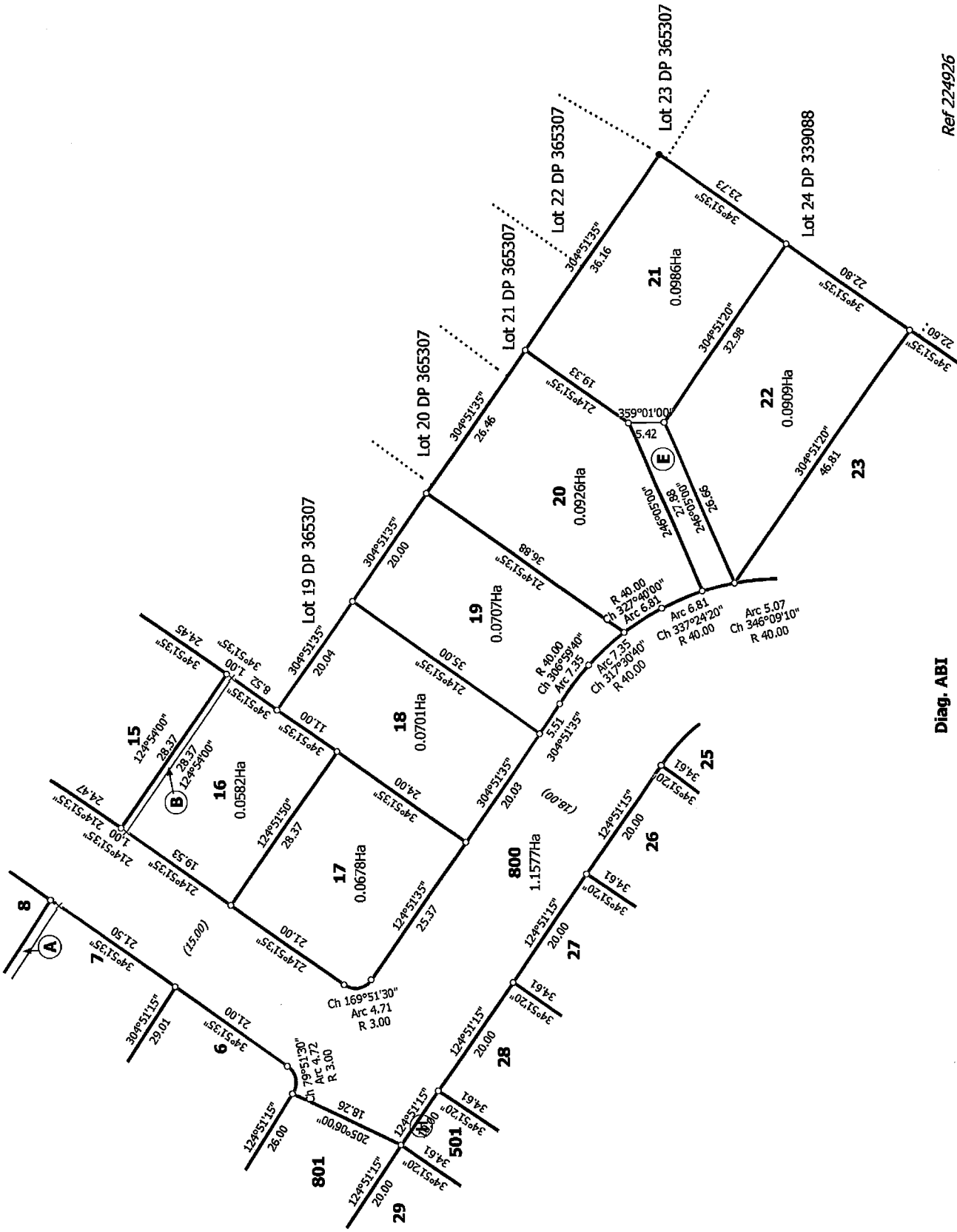


Diag. ABK

T 4/11

Ref 224926

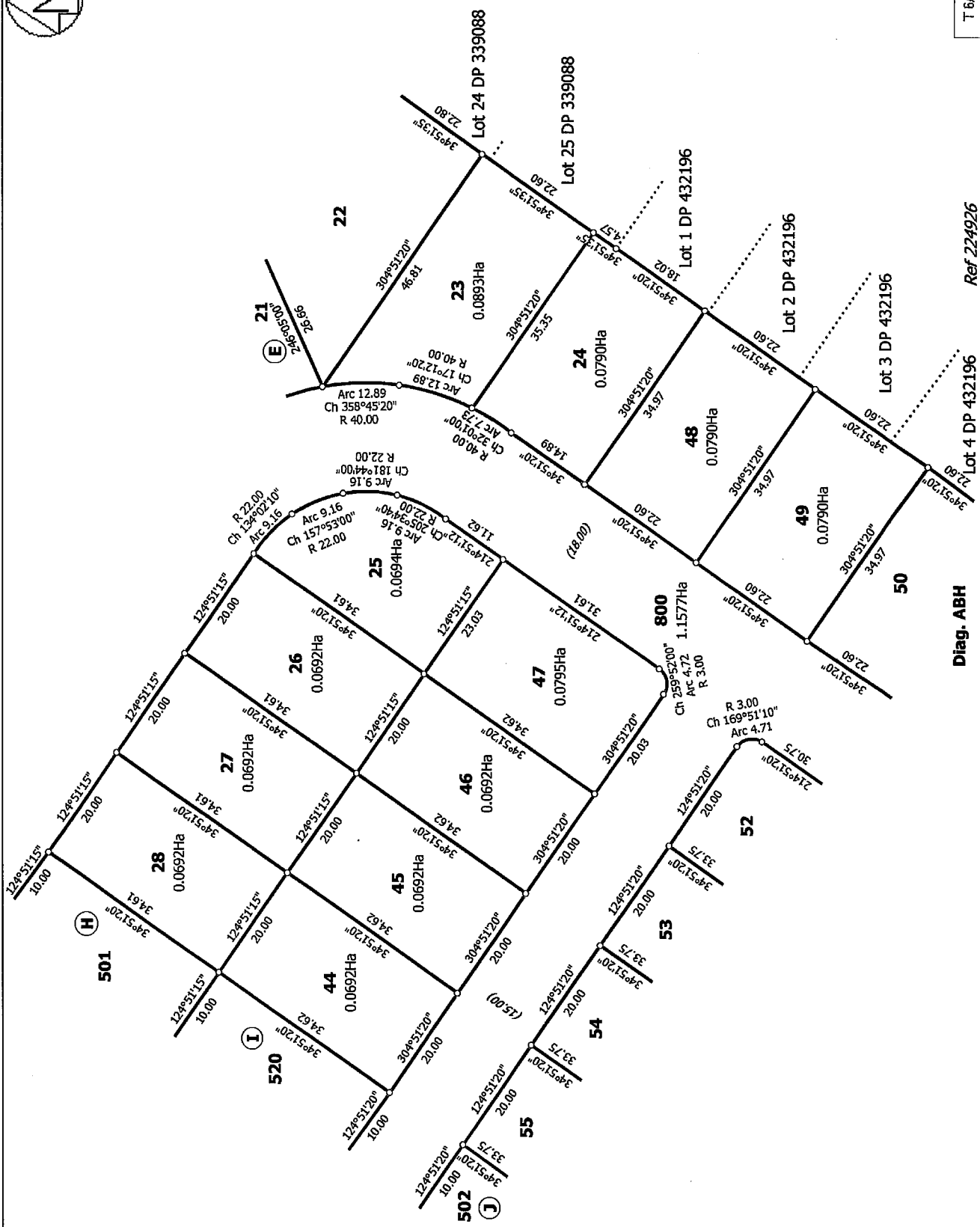
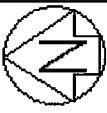
<p>Land District: Canterbury</p> <p>Digitally Generated Plan</p> <p>Generated on: 23/04/2013 4:45pm Page 9 of 16</p>	<p>Lots 1 - 90,500,503,520,522,529,700,701,800,801 & 1000 being subdivision of Part Section 1 SO 19540, Part Sections 2 & 3 SO 18584, Part Section 1 SO 19340 and Part Lot 1 DP 75811</p> <p>Surveyor: Melissa Jayne Crowe</p> <p>Firm: Aurecon (Christchurch)</p>	<p>Title Plan</p> <p>LT 464075</p> <p>DRAFT</p>
--	--	---



Diag. ABI

Ref 224926

T 5/11

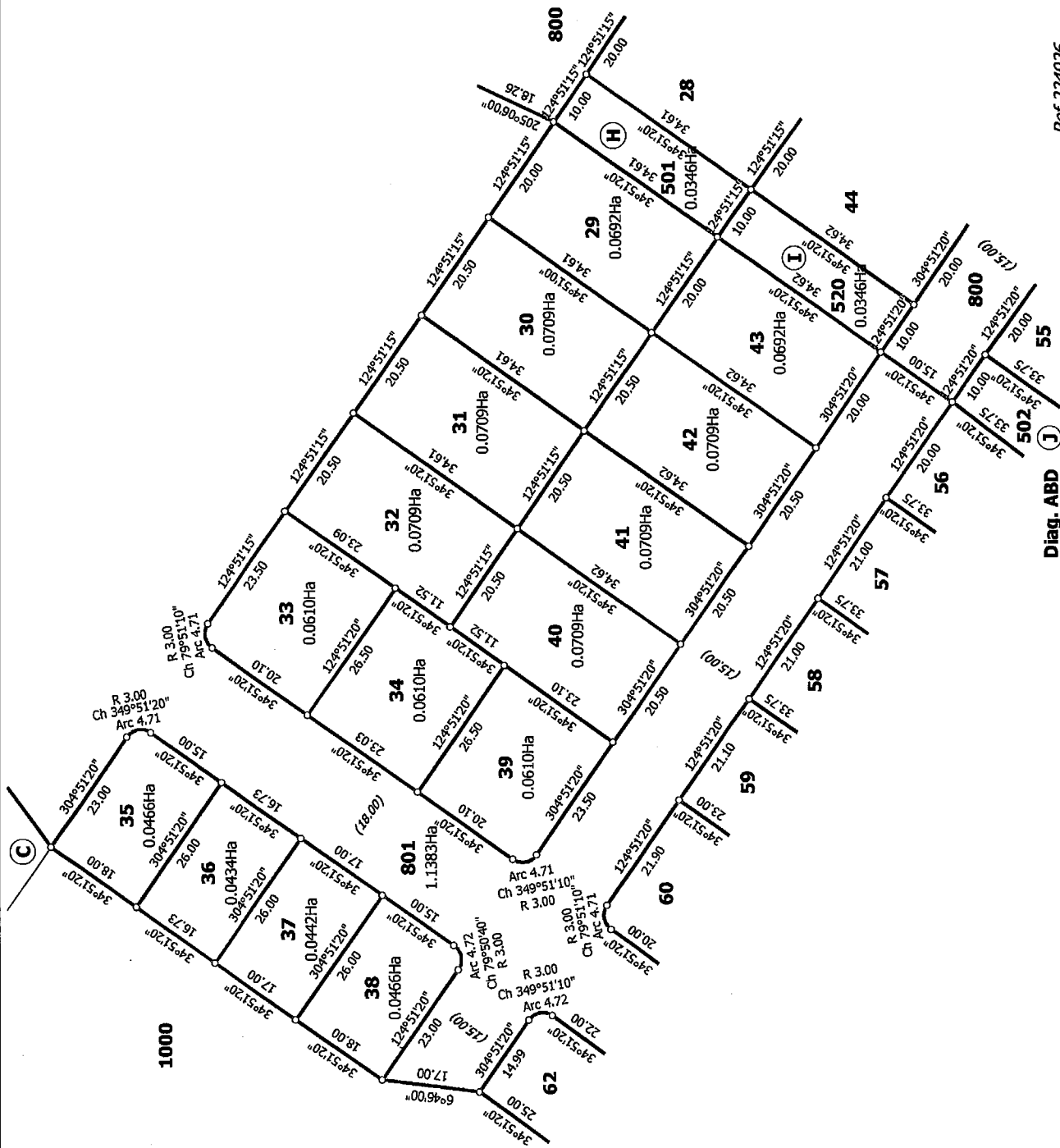


Diag. ABH

Ref 224926

T 6/11

Land District: Canterbury	Lots 1 - 90, 500, 503, 520, 522, 529, 700, 701, 800, 801 & 1000 being subdivision of Part Section 1 SO 19540, Part Sections 2 & 3 SO 18584, Part Section 1 SO 19340 and Part Lot 1 DP 75811	Surveyor: Melissa Jayne Crowe Firm: Aurecon (Christchurch)	Title Plan LT 464075 DRAFT
Digitally Generated Plan Generated on: 29/04/2013 4:49pm Page 11 of 16			



T 7/1

Ref 224926

Diag. ABD (J)

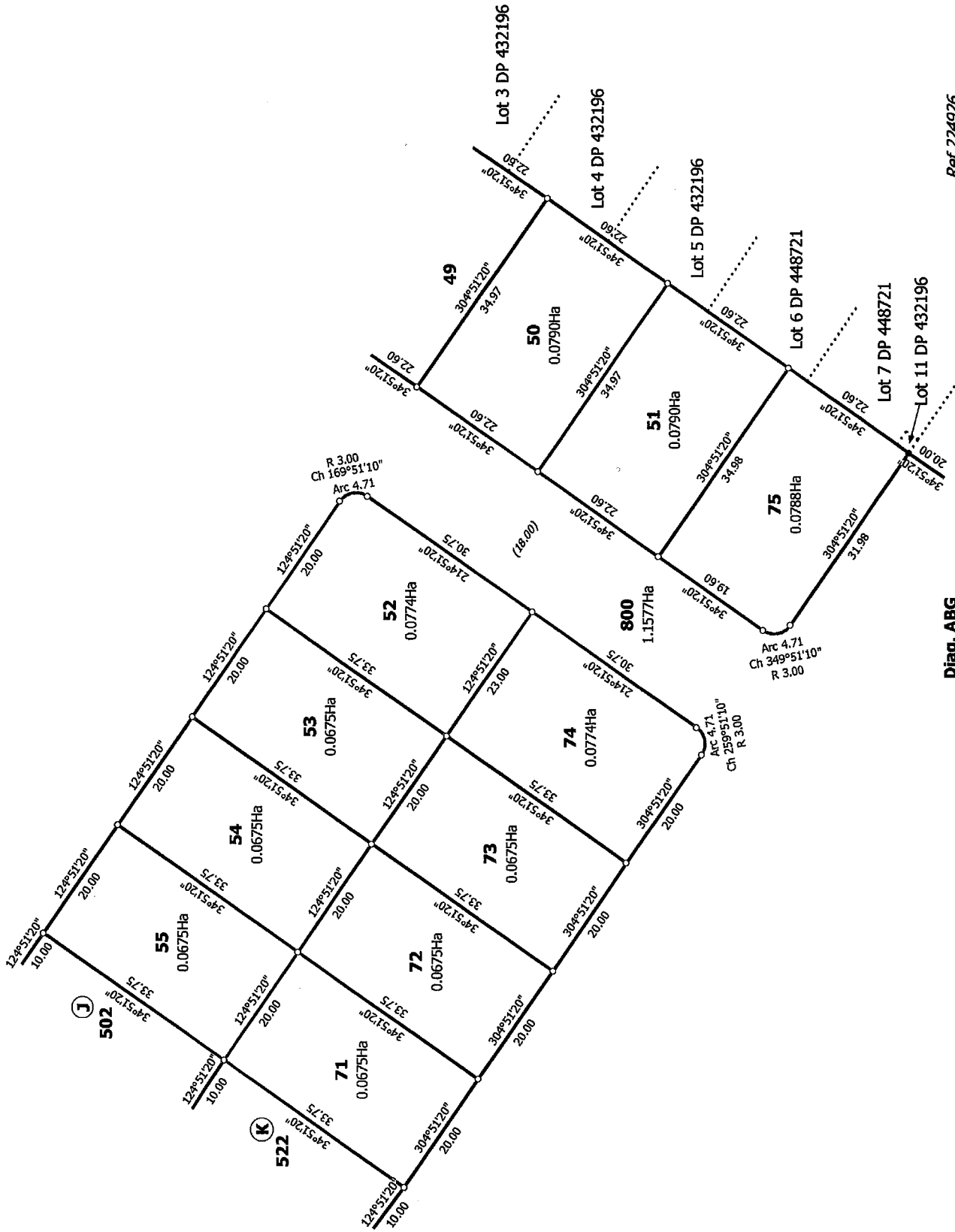
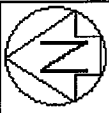
Title Plan
 LT 464075
 DRAFT

Surveyor: Melisa Jayne Crowe
 Firm: Aurecon (Christchurch)

Lots 1 - 90, 500, 503, 520, 522, 529, 700, 701, 800, 801 & 1000 being subdivision of Part Section 1 SO 19540, Part Sections 2 & 3 SO 18584, Part Section 1 SO 19340 and Part Lot 1 DP 75811

Land District Canterbury

Digitally Generated Plan
 Generated on: 23/04/2013 4:49pm Page 12 of 16



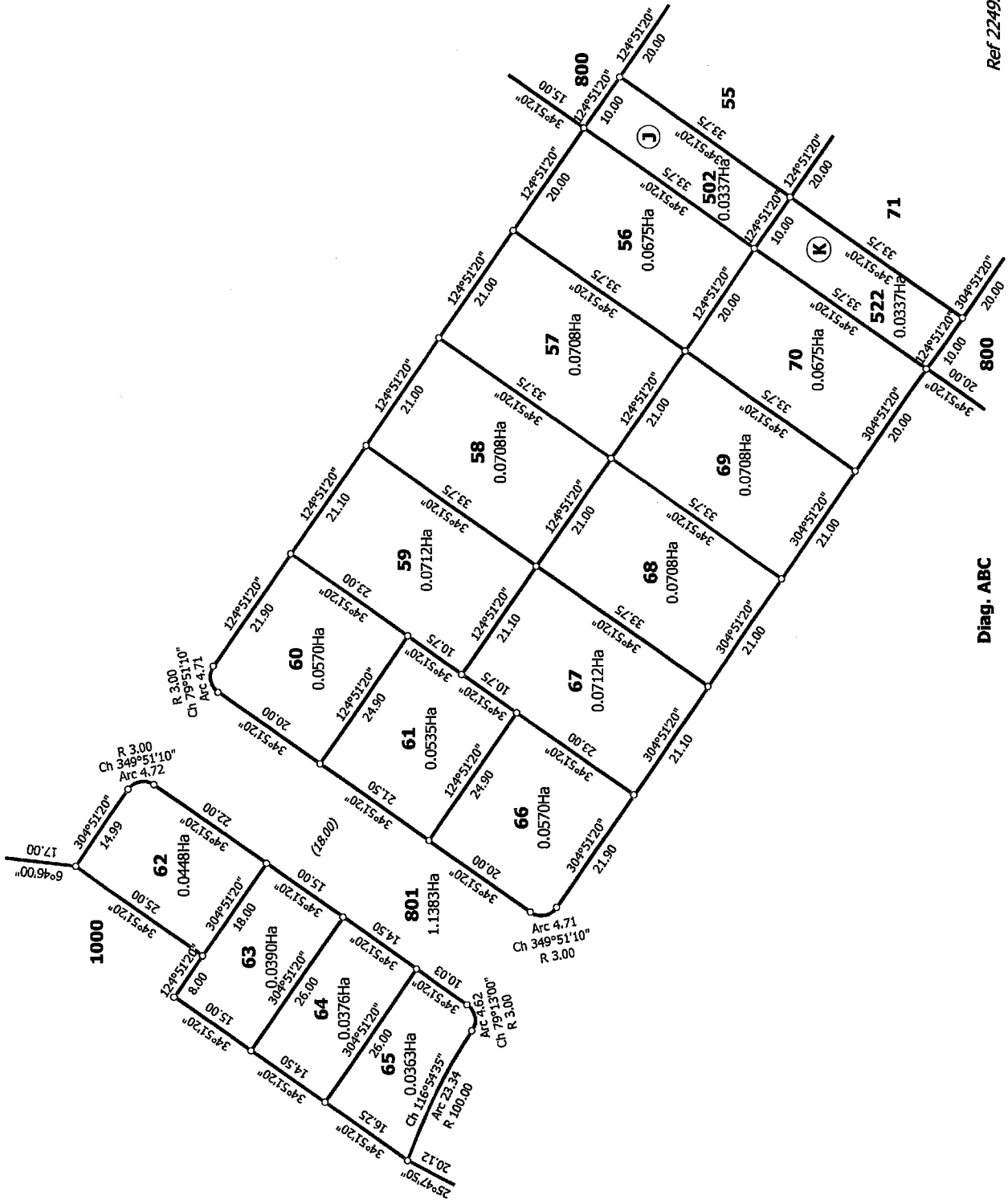
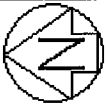
T 8/11

Ref 224926
 Title Plan
 LT 464075
 DRAFT

Surveyor: Melisa Jayne Crowe
 Firm: Aurecon (Christchurch)

Diag. ABG
 Lots 1 - 90, 500, 503, 520, 522, 529, 700, 701, 800, 801 & 1000 being subdivision of
 Part Section 1 SO 19540, Part Sections 2 & 3 SO 18584, Part Section 1 SO 19340
 and Part Lot 1 DP 75811

Land District: Canterbury
 Digitally Generated Plan
 Generated on: 29/04/2013 4:45pm, Page 13 of 16



Diag. ABC

Ref 224926

T 9/11

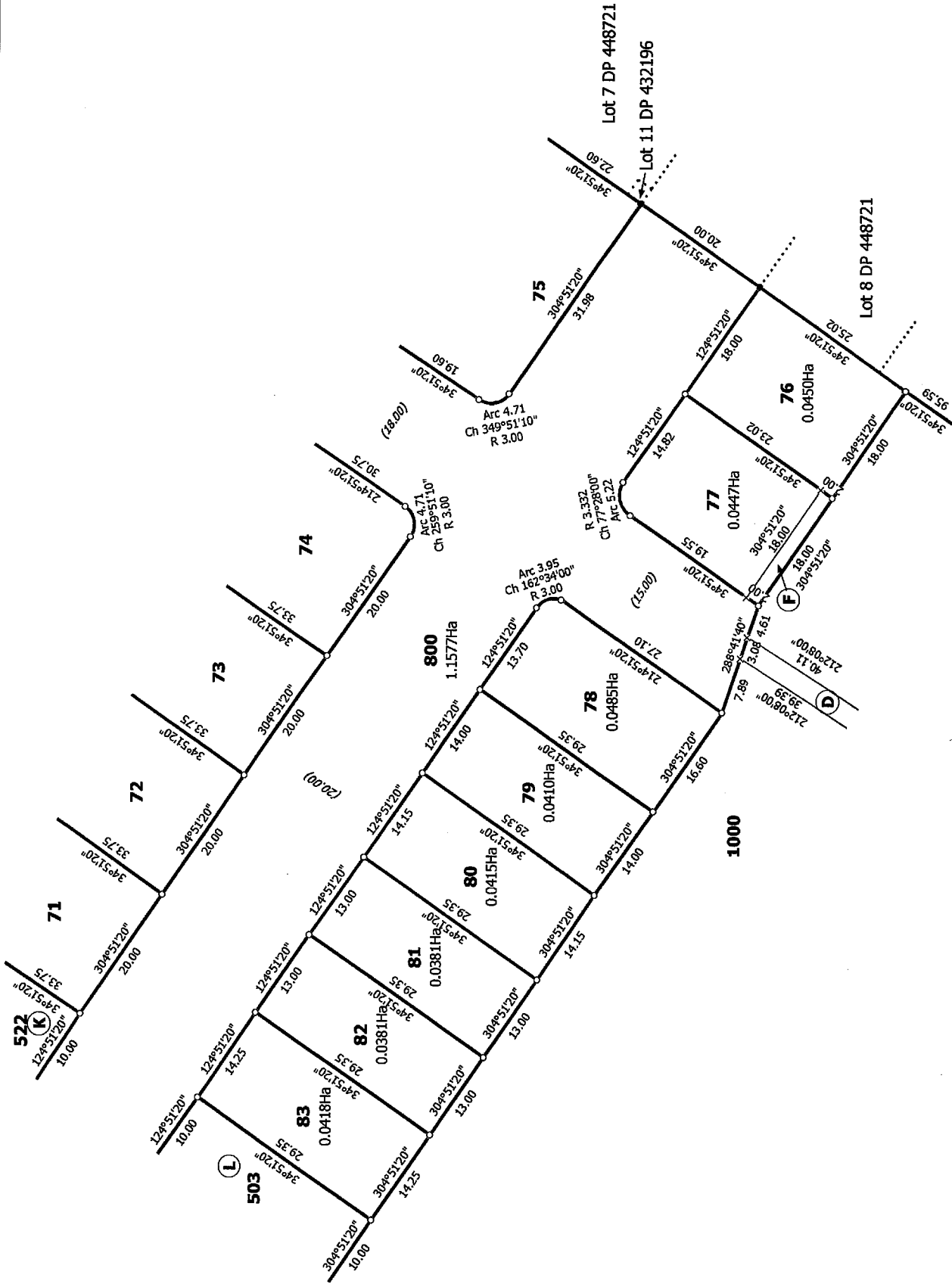
Land District: Canterbury

Digitally Generated Plan
Generated on: 29/04/2013 4:43pm Page 14 of 15

Surveyor: Melissa Jayne Crowe
Firm: Aurecon (Christchurch)

Title Plan
LT 464075
DRAFT

Lots 1 - 90, 500, 503, 520, 522, 529, 700, 701, 800, 801 & 1000 being subdivision of Part Section 1 SO 19540, Part Sections 2 & 3 SO 18584, Part Section 1 SO 19340 and Part Lot 1 DP 75811



T 10/11

Ref 224926

Title Plan
LT 464075
DRAFT

Lot 9 DP 448721

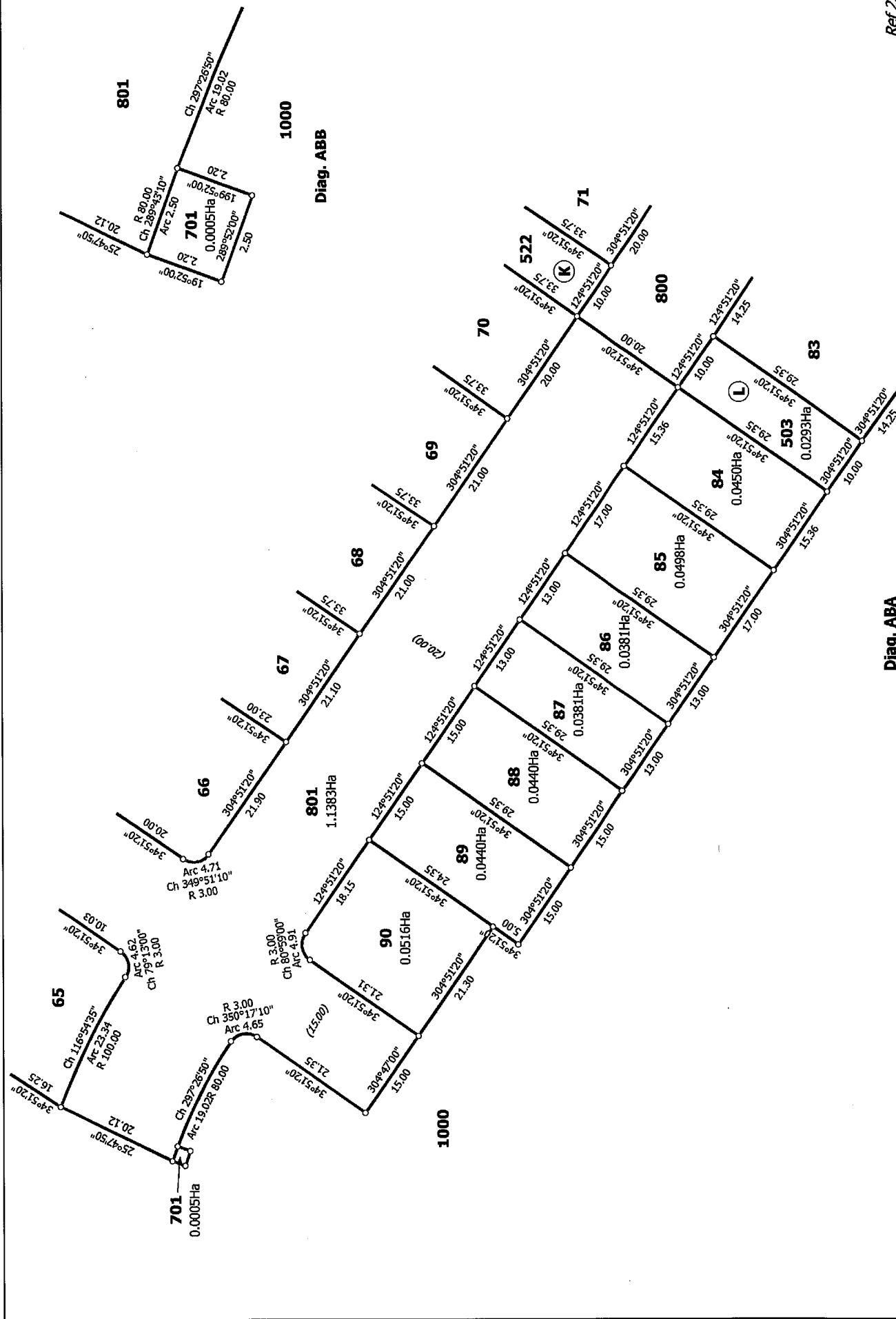
Surveyor: Melissa Jayne Crowe
Firm: Aurecon (Christchurch)

Diag. ABF

Lots 1 - 90, 500, 503, 520, 522, 529, 700, 701, 800, 801 & 1000 being subdivision of Part Section 1 SO 19540, Part Sections 2 & 3 SO 18584, Part Section 1 SO 19340 and Part Lot 1 DP 75811

Land District: Canterbury

Digitally Generated Plan
Generated on: 23/04/2013 4:49pm Page 15 of 15



Ref 224926 T11/11

Diag. ABA

Diag. ABB

Land District: Canterbury
 Digitally Generated Plan
 Generated on: 28/04/2013 4:45pm Page 16 of 16

Lots 1 - 90, 500, 503, 520, 522, 529, 700, 701, 800, 801 & 1000 being subdivision of
 Part Section 1 SO 19540, Part Sections 2 & 3 SO 18584, Part Section 1 SO 19340
 and Part Lot 1 DP 75811

Surveyor: Melissa Jayne Crowe
 Firm: Aurecon (Christchurch)

Title Plan
 LT 464075
 DRAFT