



# Title Plan - LT 478270

---

**Survey Number** LT 478270  
**Surveyor Reference** 224926 - 20&21  
**Surveyor** Melisa Jayne Crowe  
**Survey Firm** Aurecon (Christchurch)  
**Surveyor Declaration**

---

## Survey Details

**Dataset Description** Lots 371-413, 429, 512, 513, 515, 706, 707 & 1000 - 1002 being subdivision of Lot 1001 DP 474306

**Status** Initiated

**Land District** Canterbury **Survey Class** Class A

**Submitted Date** **Survey Approval Date**  
**Deposit Date**

---

## Territorial Authorities

Selwyn District

---

## Comprised In

CT 654385

---

## Created Parcels

Parcels	Parcel Intent	Area	CT Reference
Lot 513 Deposited Plan 478270	Vesting on Deposit for Local Purpose Reserve	0.0367 Ha	664763
Lot 371 Deposited Plan 478270	Fee Simple Title	0.1309 Ha	664764
Lot 372 Deposited Plan 478270	Fee Simple Title	0.1387 Ha	664765
Lot 373 Deposited Plan 478270	Fee Simple Title	0.0465 Ha	664766
Lot 374 Deposited Plan 478270	Fee Simple Title	0.0427 Ha	664767
Lot 375 Deposited Plan 478270	Fee Simple Title	0.0439 Ha	664768
Lot 376 Deposited Plan 478270	Fee Simple Title	0.1330 Ha	664769
Lot 377 Deposited Plan 478270	Fee Simple Title	0.0514 Ha	664770
Lot 378 Deposited Plan 478270	Fee Simple Title	0.0375 Ha	664771
Lot 379 Deposited Plan 478270	Fee Simple Title	0.0375 Ha	664772
Lot 380 Deposited Plan 478270	Fee Simple Title	0.0350 Ha	664773
Lot 381 Deposited Plan 478270	Fee Simple Title	0.0375 Ha	664774
Lot 382 Deposited Plan 478270	Fee Simple Title	0.0375 Ha	664775
Lot 383 Deposited Plan 478270	Fee Simple Title	0.0375 Ha	664776
Lot 384 Deposited Plan 478270	Fee Simple Title	0.0375 Ha	664777
Lot 385 Deposited Plan 478270	Fee Simple Title	0.0375 Ha	664778
Lot 386 Deposited Plan 478270	Fee Simple Title	0.0377 Ha	664779
Lot 387 Deposited Plan 478270	Fee Simple Title	0.0427 Ha	664780
Lot 388 Deposited Plan 478270	Fee Simple Title	0.0778 Ha	664781
Lot 389 Deposited Plan 478270	Fee Simple Title	0.0748 Ha	664782
Lot 429 Deposited Plan 478270	Fee Simple Title	0.0393 Ha	664783
Lot 390 Deposited Plan 478270	Fee Simple Title	0.0585 Ha	664784



# Title Plan - LT 478270

## Created Parcels

Parcels	Parcel Intent	Area	CT Reference
Lot 391 Deposited Plan 478270	Fee Simple Title	0.0634 Ha	664785
Lot 392 Deposited Plan 478270	Fee Simple Title	0.0669 Ha	664786
Lot 393 Deposited Plan 478270	Fee Simple Title	0.0783 Ha	664787
Lot 394 Deposited Plan 478270	Fee Simple Title	0.0827 Ha	664788
Lot 395 Deposited Plan 478270	Fee Simple Title	0.0787 Ha	664789
Lot 396 Deposited Plan 478270	Fee Simple Title	0.0777 Ha	664790
Lot 397 Deposited Plan 478270	Fee Simple Title	0.0777 Ha	664791
Lot 512 Deposited Plan 478270	Vesting on Deposit for Local Purpose Reserve	0.0370 Ha	664792
Lot 398 Deposited Plan 478270	Fee Simple Title	0.0740 Ha	664793
Lot 399 Deposited Plan 478270	Fee Simple Title	0.0700 Ha	664794
Lot 400 Deposited Plan 478270	Fee Simple Title	0.0740 Ha	664795
Lot 401 Deposited Plan 478270	Fee Simple Title	0.0418 Ha	664796
Lot 402 Deposited Plan 478270	Fee Simple Title	0.0542 Ha	664797
Lot 403 Deposited Plan 478270	Fee Simple Title	0.0410 Ha	664798
Lot 404 Deposited Plan 478270	Fee Simple Title	0.0385 Ha	664799
Lot 405 Deposited Plan 478270	Fee Simple Title	0.0735 Ha	664800
Lot 406 Deposited Plan 478270	Fee Simple Title	0.0735 Ha	664801
Lot 407 Deposited Plan 478270	Fee Simple Title	0.0735 Ha	664802
Lot 408 Deposited Plan 478270	Fee Simple Title	0.0390 Ha	664803
Lot 409 Deposited Plan 478270	Fee Simple Title	0.0416 Ha	664804
Lot 410 Deposited Plan 478270	Fee Simple Title	0.0416 Ha	664805
Lot 411 Deposited Plan 478270	Fee Simple Title	0.0416 Ha	664806
Lot 412 Deposited Plan 478270	Fee Simple Title	0.0408 Ha	664807
Lot 1000 Deposited Plan 478270	Fee Simple Title	20.1259 Ha	664808
Lot 413 Deposited Plan 478270	Fee Simple Title	0.1364 Ha	664809
Lot 515 Deposited Plan 478270	Fee Simple Title	0.1820 Ha	664810
Lot 1001 Deposited Plan 478270	Fee Simple Title	1.3102 Ha	664811
Lot 1002 Deposited Plan 478270	Vesting on Deposit for Road	1.2783 Ha	
Area A Deposited Plan 478270	Easement		
Area B Deposited Plan 478270	Easement		
Lot 706 Deposited Plan 478270	Fee Simple Title	0.0006 Ha	664812
Area C Deposited Plan 478270	Easement		
Area D Deposited Plan 478270	Easement		
Lot 707 Deposited Plan 478270	Fee Simple Title	0.0006 Ha	666013
<b>Total Area</b>		<b>25.6671 Ha</b>	

# Schedule / Memorandum

Land Registration District	Plan Number	Surveyor Ref
<b>Canterbury</b>	<b>DP 478270</b>	<b>224926</b>

Territorial Authority (the Council)	Council Ref
<b>Selwyn District Council</b>	<b>135261</b>

SCHEDULE OF EASEMENTS IN GROSS			
Purpose	Servient Tenement		Grantee
	Lot No	Shown	
Right to Convey Electricity	512	A	Orion New Zealand Limited
	513	D	

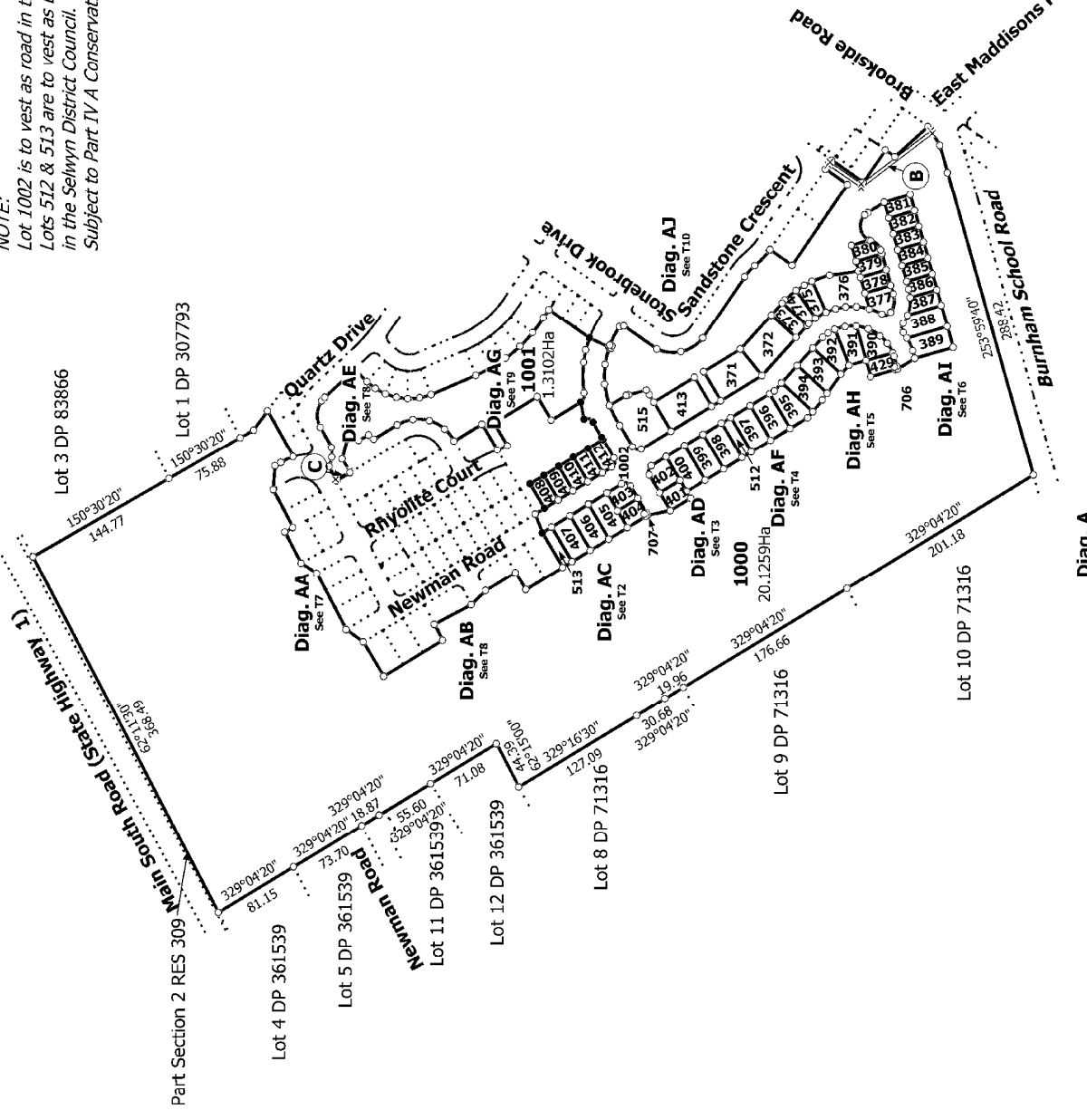
SCHEDULE OF EXISTING EASEMENT IN GROSS			
Purpose	Servient Tenement		Document
	Lot No	Shown	
Right to Drain Sewage	1000	B	EI 9394096.13
Right to Convey Electricity	1001	C	EI 9706684.7

**NOTES:**

- Lot 1002 is to vest as Road in the Selwyn District Council.
- Lots 512 & 513 are to vest as Local Purpose (Access Way) Reserve in the Selwyn District Council
- Subject to Part IV A Conservation Act 1987.



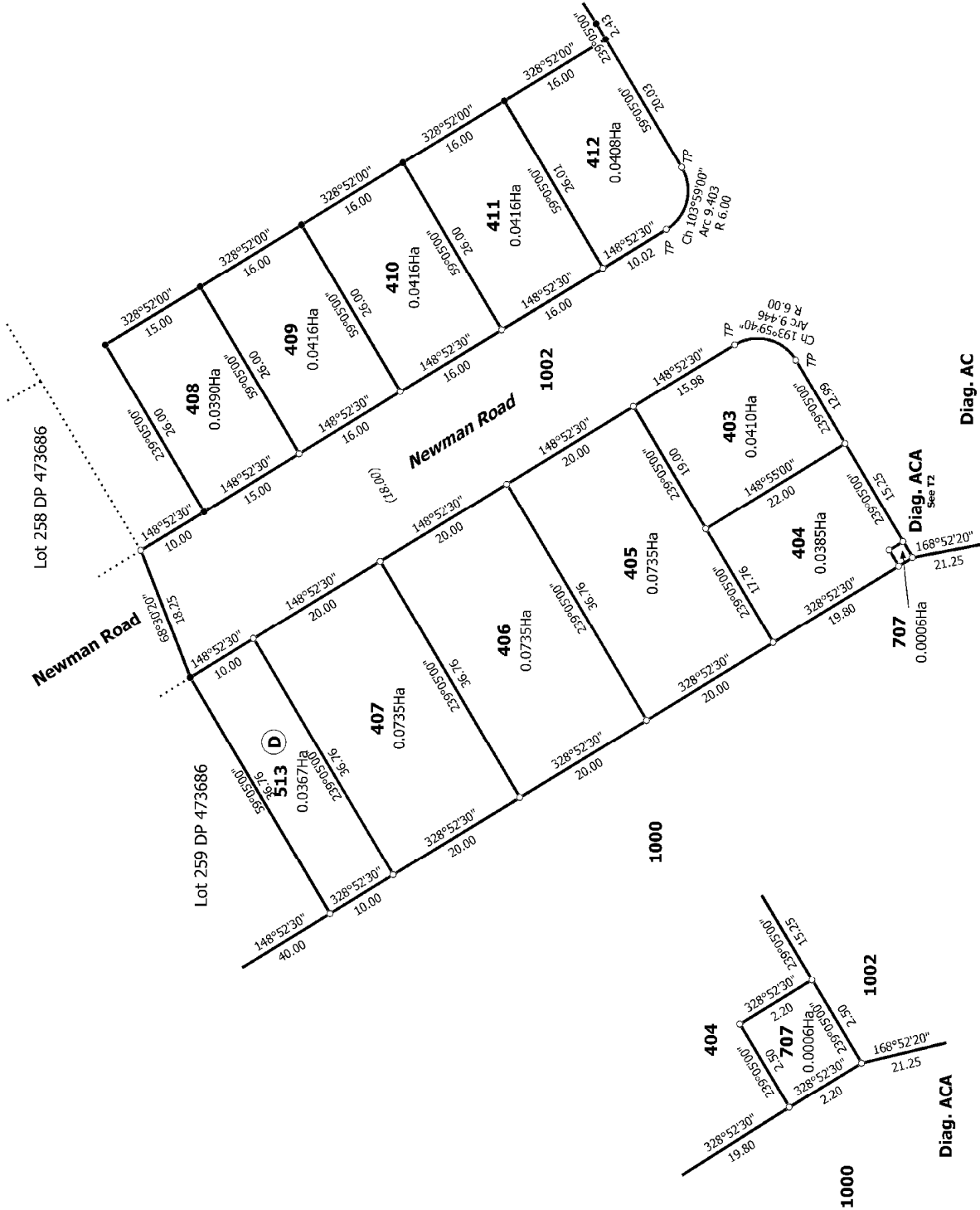
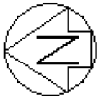
**NOTE:**  
 Lot 1002 is to vest as road in the Selwyn District Council.  
 Lots 512 & 513 are to vest as Local Purpose (Access) Reserve  
 in the Selwyn District Council.  
 Subject to Part IV A Conservation Act 1987.



T 1/11

Ref 224926

Land District: Canterbury Digitally Generated Plan Generated on: 29/07/2014 1:34pm Page 4 of 14	Lots 371-413, 429, 512, 513, 706, 707 & 1000 - 1002 being subdivision of Lot 1001 DP 474305	Surveyor: Melissa Jayne Crowe Firm: Aurecon (Christchurch)	Title Plan LT 478270 DRAFT
---	--	---	----------------------------------



T.211

Ref 224926

Land District: Canterbury	Surveyor: Melissa Jayne Crowe Firm: Aurecon (Christchurch)	Title Plan LT 478270 DRAFT
Lots 371-413, 429, 512, 513, 515, 706, 707 & 1000 - 1002 being subdivision of Lot 1001 DP 474305		Digitally Generated Plan Generated on: 29/07/2014 1:34pm Page 5 of 14



T 3/11

Ref 224926

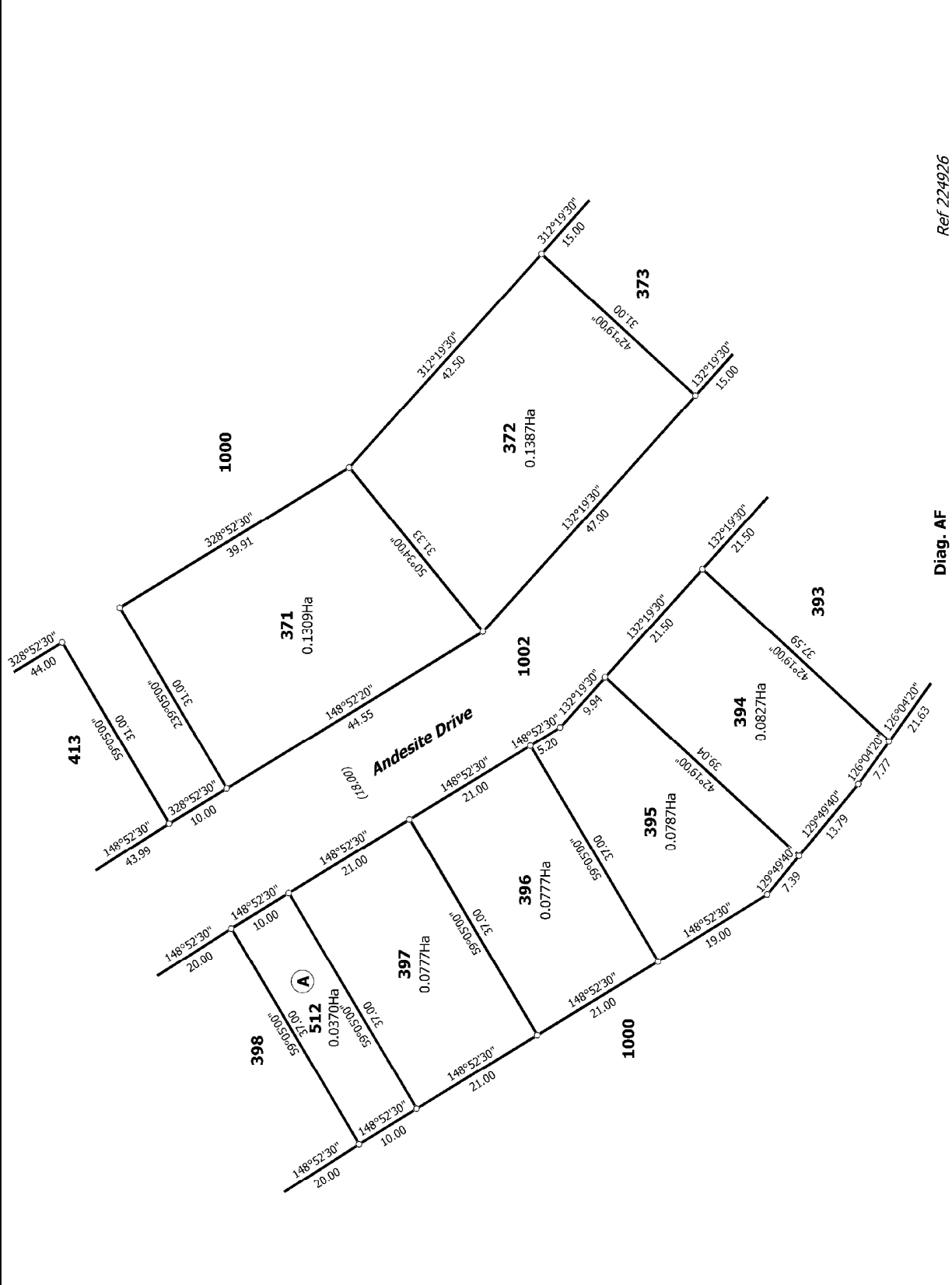
Land District: Canterbury  
 Digitally Generated Plan  
 Generated on: 29/07/2014 1:34pm Page 6 of 14

Lots 371-413, 429, 512, 513, 515, 706, 707 & 1000 - 1002 being subdivision of Lot 1001 DP 474305

Surveyor: Melissa Jayne Crowe  
 Firm: Aurecon (Christchurch)

Title Plan  
 LT 478270  
 DRAFT

Diag. AD

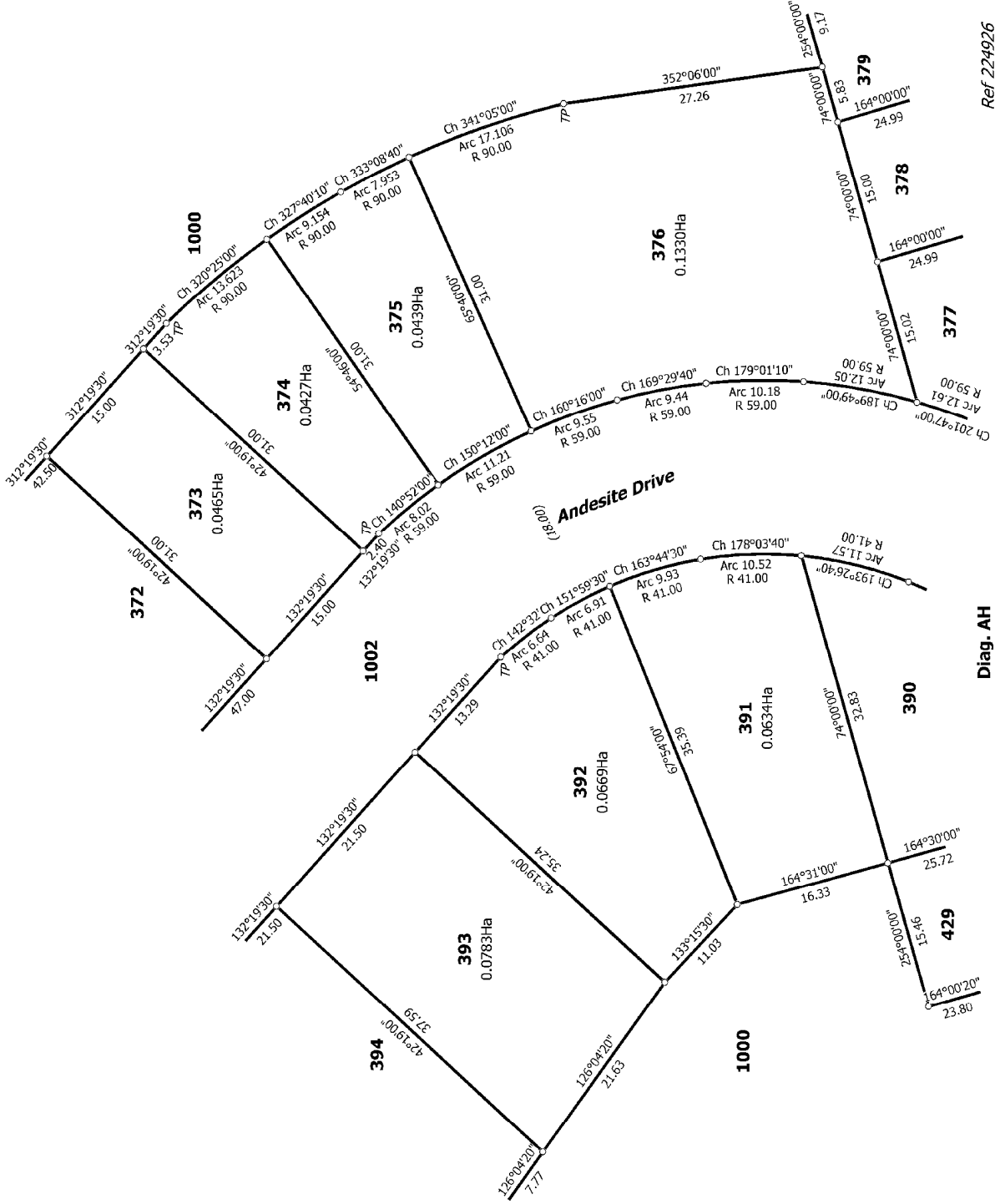


T 4/11

Ref 224926

Diag. AF

Land District: Canterbury	Surveyor: Melissa Jayne Crowe Firm: Aurecon (Christchurch)	Ref 224926
<b>Digitally Generated Plan</b> Generated on: 29/07/2014 1:34pm Page 2 of 14	<b>Lots 371-413, 429, 512, 513, 515, 706, 707 &amp; 1000 - 1002 being subdivision of Lot 1001 DP 474305</b>	<b>Title Plan</b> LT 478270 DRAFT



Diag. AH

Ref 224926

T 5/11

Land District: Canterbury

Lots 371-413, 429, 512, 513, 515, 706, 707 & 1000 - 1002 being subdivision of

Title Plan  
LT 478270  
DRAFT

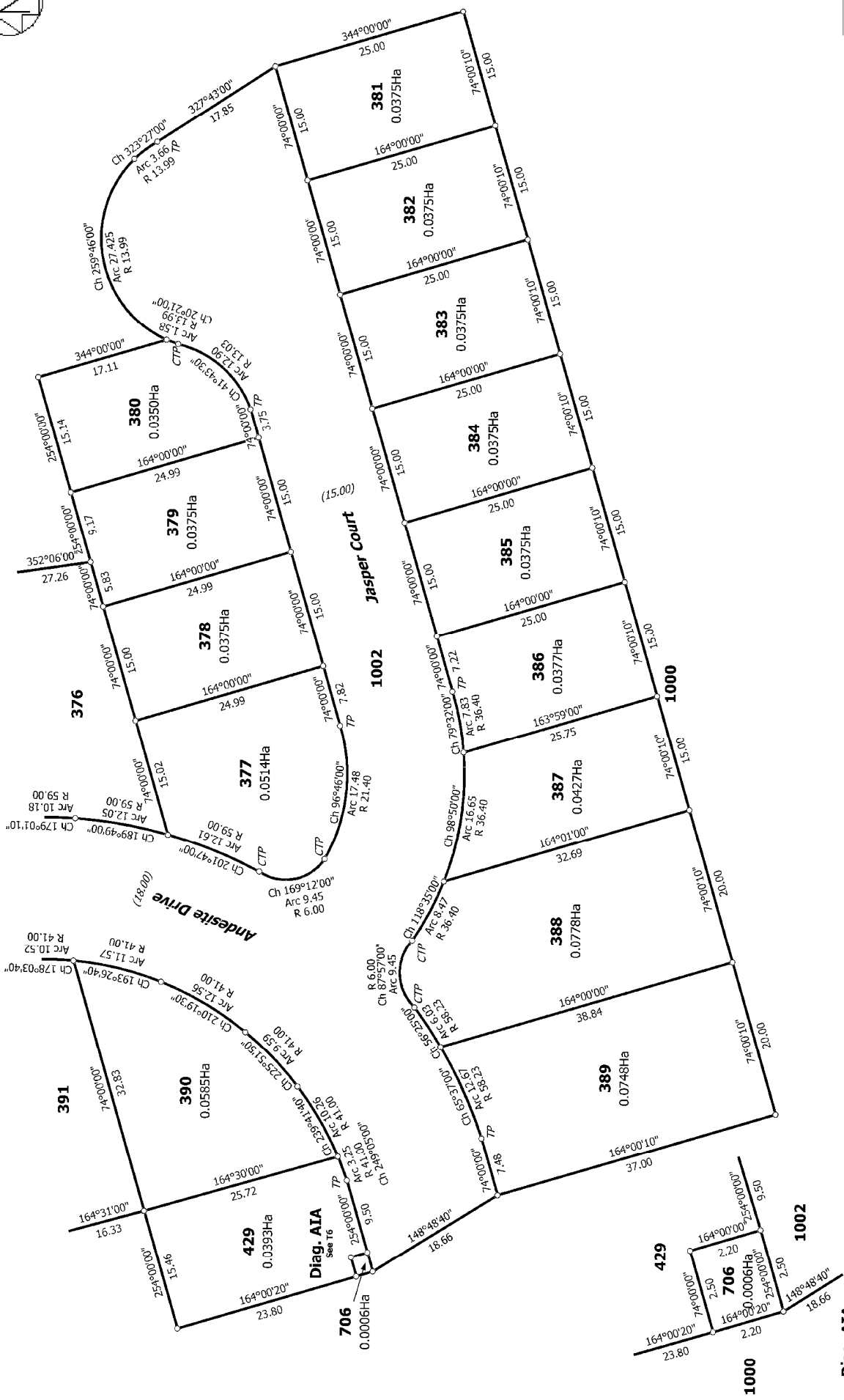
Surveyor: Melissa Jayne Crowe  
Firm: Aurecon (Christchurch)

Lot 1001 DP 474305

Digitally Generated Plan

Generated on: 29/07/2014 1:34pm Page 6 of 14





Diag. AI

T 6/11

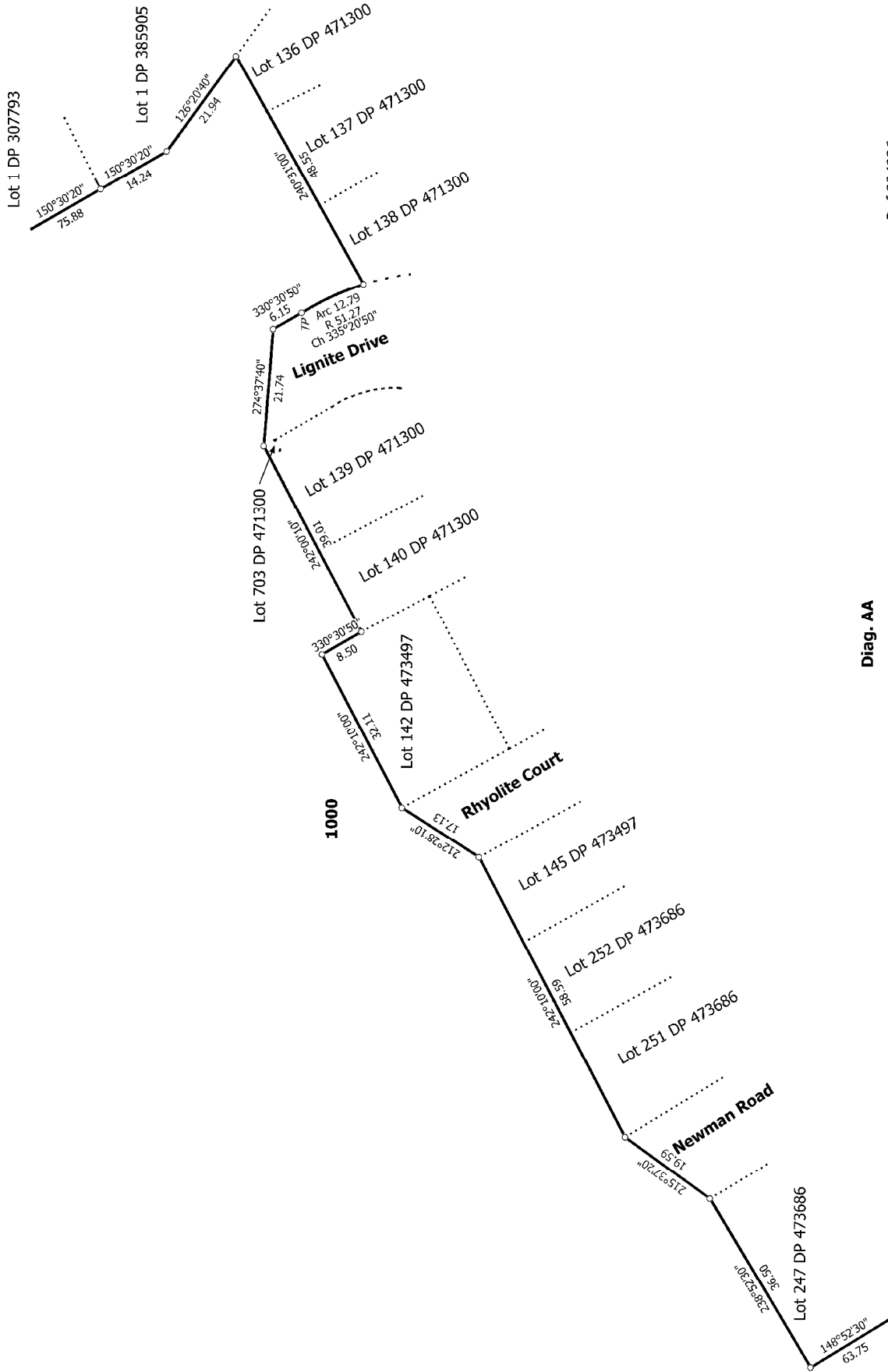
Ref 224926

Land District: Canterbury  
 Digitally Generated Plan  
 Generated on: 29/07/2014 1:34pm Page 9 of 14

Lots 371-413, 429, 512, 513, 515, 706, 707 & 1000 - 1002 being subdivision of  
 Lot 1001 DP 474305

Surveyor: Melissa Jayne Crowe  
 Firm: Aurecon (Christchurch)

Title Plan  
 LT 478270  
 DRAFT

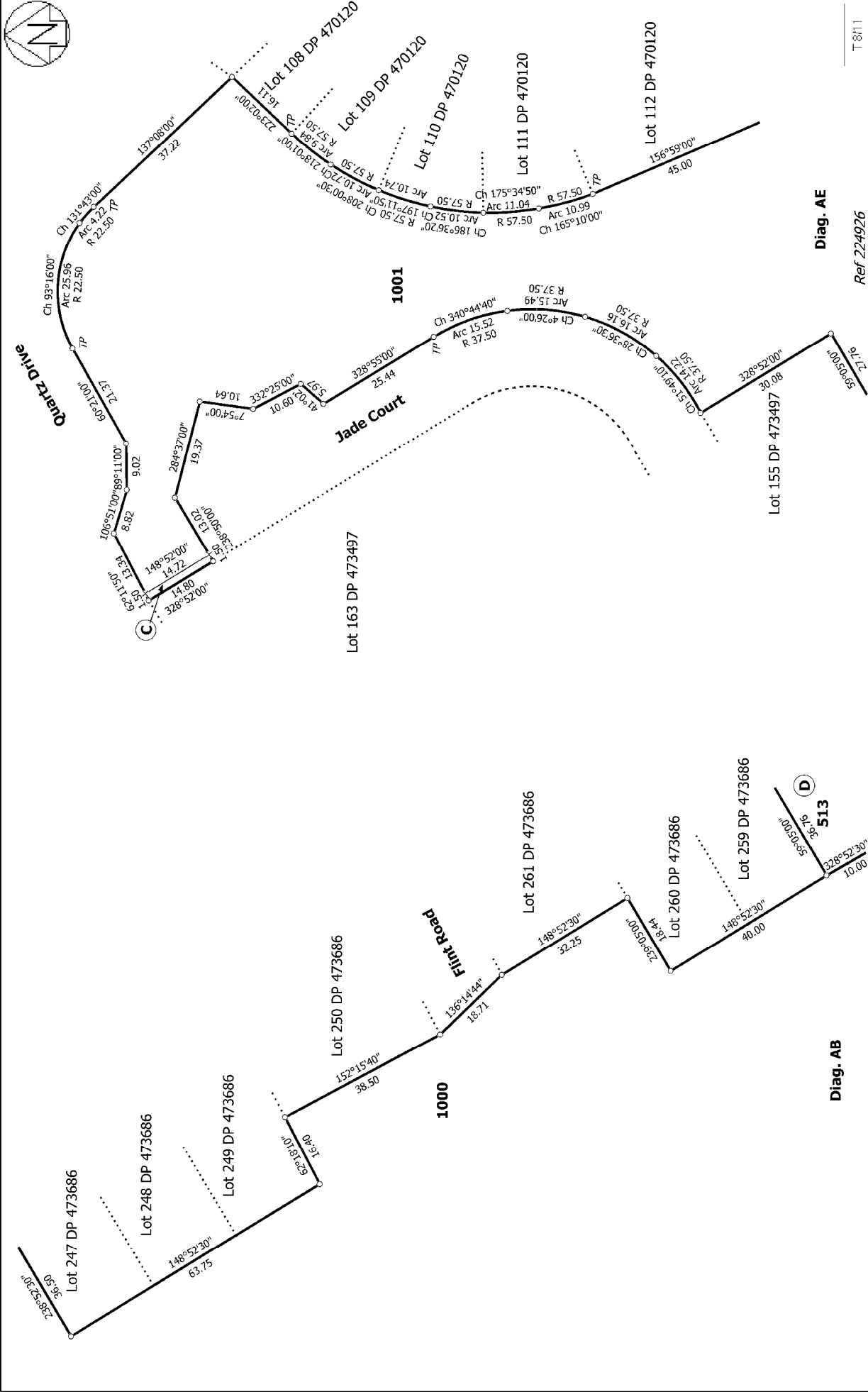


**Diag. AA**

T 7/11

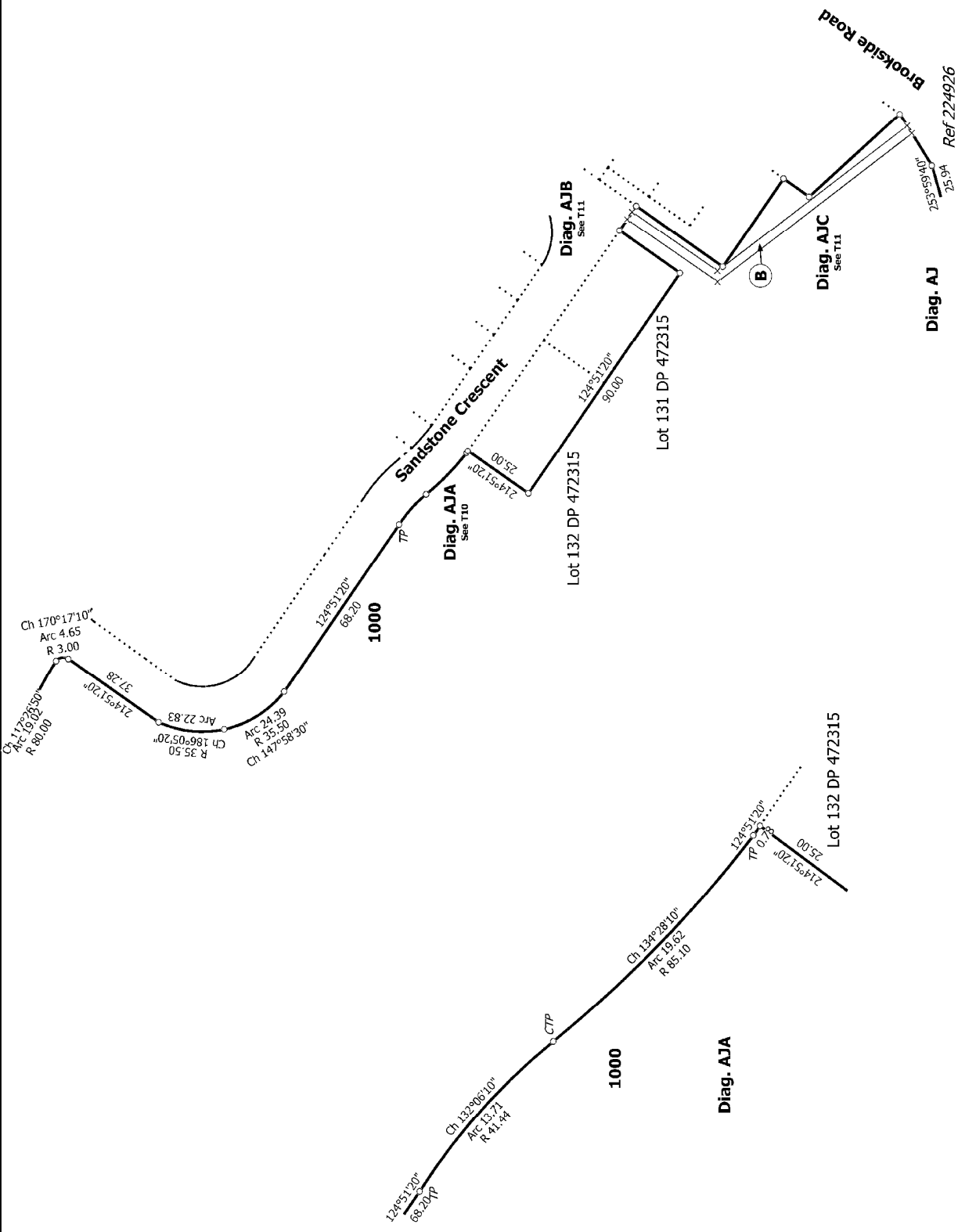
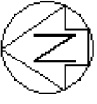
Ref 224926

<p>Land District: Canterbury</p> <p><b>Digitally Generated Plan</b></p> <p>Generated on: 29/07/2014 1:34pm Page 10 of 14</p>	<p><b>Lots 371-413, 429, 512, 513, 515, 706, 707 &amp; 1000 - 1002 being subdivision of Lot 1001 DP 474305</b></p>	<p>Surveyor: Melissa Jayne Crowe Firm: Aurecon (Christchurch)</p>	<p><b>Title Plan</b> <b>LT 478270</b> <b>DRAFT</b></p>
--	--	---	--

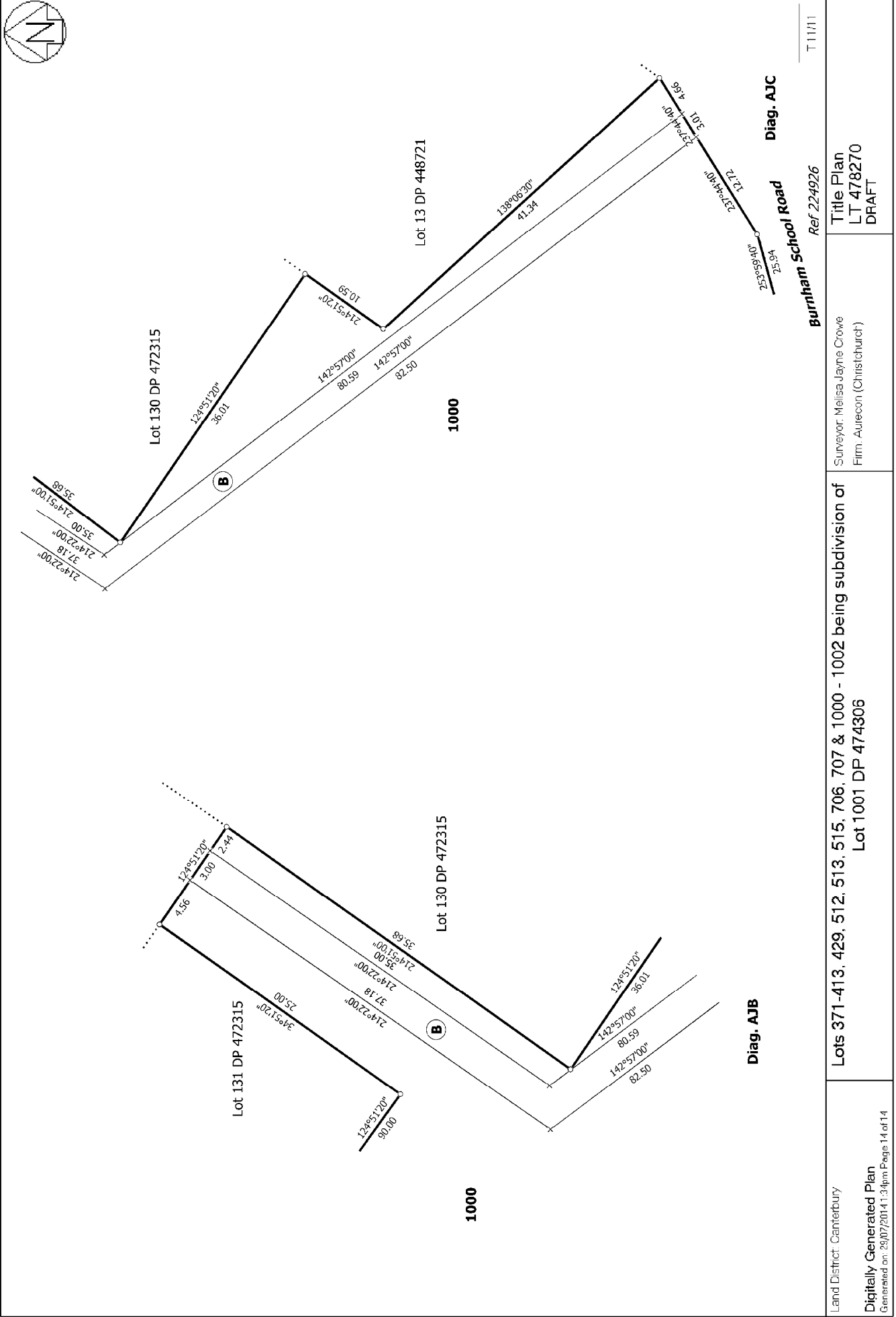


<p>Land District: Canterbury</p> <p><b>Digitally Generated Plan</b></p> <p>Generated on: 29/07/2014 1:34pm Page 11 of 14</p>	<p><b>Lots 371-413, 429, 512, 513, 515, 706, 707 &amp; 1000 - 1002 being subdivision of Lot 1001 DP 474305</b></p> <p>Surveyor: Melissa Jayne Crowe Firm: Aurecon (Christchurch)</p>	<p><b>Title Plan</b> <b>LT 478270</b> <b>DRAFT</b></p>	<p><b>Diag. AB</b></p> <p><b>Diag. AE</b></p> <p>Ref 224926</p> <p>T 8/11</p>
--	--	--	---





Land District: Canterbury	Surveyor: Melissa Jayne Crowe Firm: Aurecon (Christchurch)	Title Plan LT 478270 DRAFT	T 1011
<b>Digitally Generated Plan</b> Generated on: 29/07/2014 1:34pm Page 13 of 14		Lots 371-413, 429, 512, 513, 515, 706, 707 & 1000 - 1002 being subdivision of Lot 1001 DP 474306	



T 11111

Ref 224926

Burnham School Road

Diag. AJB

Diag. AJC

<p>Land District: Canterbury</p> <p><b>Digitally Generated Plan</b></p> <p>Generated on: 29/07/2014 1:34pm Page 14 of 14</p>	<p><b>Lots 371-413, 429, 512, 513, 515, 706, 707 &amp; 1000 - 1002 being subdivision of Lot 1001 DP 474305</b></p>	<p>Surveyor: Melissa Jayne Crowe</p> <p>Firm: Aurecon (Christchurch)</p>	<p><b>Title Plan</b></p> <p><b>LT 478270</b></p> <p><b>DRAFT</b></p>
--	--	--	--