

# Title Plan - DP 500854

---

**Survey Number** DP 500854  
**Surveyor Reference** 235361 Sth Prestons Stage 1o  
**Surveyor** Keith Alex Ashby  
**Survey Firm** Aurecon (Christchurch)  
**Surveyor Declaration** I Keith Alex Ashby, being a licensed cadastral surveyor, certify that:  
 (a) this dataset provided by me and its related survey are accurate, correct and in accordance with the Cadastral Survey Act 2002 and the Rules for Cadastral Survey 2010, and  
 (b) the survey was undertaken by me or under my personal direction.  
 Declared on 13 Sep 2016 10:52 AM

---

## Survey Details

**Dataset Description** Lots 64,84,102,107-161,3008 - 3010, 3012 - 3014, 3030 - 3031 Being A Subdivision of Lot 3030 DP 494193 and Lots 1 & 2 DP 467428  
**Status** Deposited  
**Land District** Canterbury **Survey Class** Class A  
**Submitted Date** 13/09/2016 **Survey Approval Date** 14/09/2016  
**Deposit Date** 04/10/2016

---

## Territorial Authorities

Christchurch City

---

## Comprised In

CT 722737  
 CT 625607  
 CT 625857

---

## Created Parcels

Parcels	Parcel Intent	Area	CT Reference
Lot 3030 Deposited Plan 500854	Fee Simple Title	33.6995 Ha	747624
Area A Deposited Plan 500854	Easement		
Area ZC Deposited Plan 500854	Easement		
Area CA Deposited Plan 500854	Land Covenant		
Area CB Deposited Plan 500854	Land Covenant		
Area CC Deposited Plan 500854	Land Covenant		
Area CD Deposited Plan 500854	Land Covenant		
Lot 3009 Deposited Plan 500854	Fee Simple Title	0.0005 Ha	747625
Area D Deposited Plan 500854	Easement		
Lot 148 Deposited Plan 500854	Fee Simple Title	0.0613 Ha	747563
Lot 139 Deposited Plan 500854	Fee Simple Title	0.0614 Ha	747564
Lot 140 Deposited Plan 500854	Fee Simple Title	0.0613 Ha	747565
Lot 132 Deposited Plan 500854	Fee Simple Title	0.0650 Ha	747566
Lot 131 Deposited Plan 500854	Fee Simple Title	0.0648 Ha	747567
Lot 133 Deposited Plan 500854	Fee Simple Title	0.0637 Ha	747568
Lot 130 Deposited Plan 500854	Fee Simple Title	0.0637 Ha	747569
Lot 134 Deposited Plan 500854	Fee Simple Title	0.0637 Ha	747570

# Title Plan - DP 500854

---

## Created Parcels

Parcels	Parcel Intent	Area	CT Reference
Lot 129 Deposited Plan 500854	Fee Simple Title	0.0637 Ha	747571
Lot 135 Deposited Plan 500854	Fee Simple Title	0.0637 Ha	747572
Lot 128 Deposited Plan 500854	Fee Simple Title	0.0637 Ha	747573
Lot 136 Deposited Plan 500854	Fee Simple Title	0.0637 Ha	747574
Lot 127 Deposited Plan 500854	Fee Simple Title	0.0637 Ha	747575
Lot 137 Deposited Plan 500854	Fee Simple Title	0.0637 Ha	747576
Lot 126 Deposited Plan 500854	Fee Simple Title	0.0637 Ha	747577
Lot 138 Deposited Plan 500854	Fee Simple Title	0.0637 Ha	747578
Lot 125 Deposited Plan 500854	Fee Simple Title	0.0637 Ha	747579
Lot 84 Deposited Plan 500854	Fee Simple Title	0.0637 Ha	747580
Lot 109 Deposited Plan 500854	Fee Simple Title	0.0488 Ha	747581
Lot 110 Deposited Plan 500854	Fee Simple Title	0.0484 Ha	747582
Lot 111 Deposited Plan 500854	Fee Simple Title	0.0485 Ha	747583
Lot 112 Deposited Plan 500854	Fee Simple Title	0.0463 Ha	747584
Lot 113 Deposited Plan 500854	Fee Simple Title	0.0469 Ha	747585
Lot 114 Deposited Plan 500854	Fee Simple Title	0.0499 Ha	747586
Lot 115 Deposited Plan 500854	Fee Simple Title	0.0499 Ha	747587
Lot 119 Deposited Plan 500854	Fee Simple Title	0.0465 Ha	747588
Lot 120 Deposited Plan 500854	Fee Simple Title	0.0458 Ha	747589
Lot 121 Deposited Plan 500854	Fee Simple Title	0.0458 Ha	747590
Lot 122 Deposited Plan 500854	Fee Simple Title	0.0460 Ha	747591
Lot 150 Deposited Plan 500854	Fee Simple Title	0.0800 Ha	747592
Lot 149 Deposited Plan 500854	Fee Simple Title	0.0614 Ha	747593
Lot 102 Deposited Plan 500854	Fee Simple Title	0.0637 Ha	747594
Lot 151 Deposited Plan 500854	Fee Simple Title	0.0966 Ha	747595
Area B Deposited Plan 500854	Land Covenant		
Lot 152 Deposited Plan 500854	Fee Simple Title	0.0802 Ha	747596
Lot 147 Deposited Plan 500854	Fee Simple Title	0.0612 Ha	747597
Lot 141 Deposited Plan 500854	Fee Simple Title	0.0612 Ha	747598
Lot 142 Deposited Plan 500854	Fee Simple Title	0.0611 Ha	747599
Lot 143 Deposited Plan 500854	Fee Simple Title	0.0610 Ha	747600
Lot 144 Deposited Plan 500854	Fee Simple Title	0.0609 Ha	747601
Lot 145 Deposited Plan 500854	Fee Simple Title	0.0608 Ha	747602
Lot 146 Deposited Plan 500854	Fee Simple Title	0.0647 Ha	747603
Lot 108 Deposited Plan 500854	Fee Simple Title	0.0480 Ha	747604
Lot 124 Deposited Plan 500854	Fee Simple Title	0.0450 Ha	747605
Lot 123 Deposited Plan 500854	Fee Simple Title	0.0452 Ha	747606
Lot 118 Deposited Plan 500854	Fee Simple Title	0.0500 Ha	747607
Lot 116 Deposited Plan 500854	Fee Simple Title	0.0494 Ha	747608
Lot 117 Deposited Plan 500854	Fee Simple Title	0.0468 Ha	747609
Lot 3010 Deposited Plan 500854	Fee Simple Title	0.0006 Ha	747610
Lot 64 Deposited Plan 500854	Fee Simple Title	0.0799 Ha	747611
Lot 3008 Deposited Plan 500854	Vesting on Deposit for Local Purpose Reserve	0.0663 Ha	747612



# Title Plan - DP 500854

---

## Created Parcels

Parcels	Parcel Intent	Area	CT Reference
Lot 3031 Deposited Plan 500854	Vesting on Deposit for Local Purpose Reserve	0.0643 Ha	747613
Lot 107 Deposited Plan 500854	Fee Simple Title	0.0888 Ha	747614
	Road	0.1114 Ha	
	Road	0.3205 Ha	
Area G Deposited Plan 500854	Land Covenant		
Area H Deposited Plan 500854	Land Covenant		
Area F Deposited Plan 500854	Land Covenant		
Lot 153 Deposited Plan 500854	Fee Simple Title	0.0647 Ha	747615
Lot 154 Deposited Plan 500854	Fee Simple Title	0.0645 Ha	747616
Lot 155 Deposited Plan 500854	Fee Simple Title	0.0650 Ha	747617
Lot 156 Deposited Plan 500854	Fee Simple Title	0.0650 Ha	747618
Lot 157 Deposited Plan 500854	Fee Simple Title	0.0650 Ha	747619
Lot 158 Deposited Plan 500854	Fee Simple Title	0.0628 Ha	747620
Lot 159 Deposited Plan 500854	Fee Simple Title	0.0641 Ha	747621
Lot 160 Deposited Plan 500854	Fee Simple Title	0.0484 Ha	747622
Lot 161 Deposited Plan 500854	Fee Simple Title	0.0450 Ha	747623
	Road	1.0655 Ha	
Area ZA Deposited Plan 500854	Easement		
<b>Total Area</b>		<hr/> 38.8037 Ha	

# Schedule / Memorandum

Land Registration District	Plan Number	Surveyor Ref
<b>Canterbury</b>	<b>DP 500854</b>	<b>235361 – Stage 1o</b>

Territorial Authority (the Council)	Council Ref
<b>Christchurch City Council</b>	<b>RMA92027815</b>

<b>MEMORANDUM OF EASEMENT IN GROSS</b>			
<b>Purpose</b>	<b>Servient Tenement</b>		<b>Grantee</b>
	<b>Lot No</b>	<b>Shown</b>	
Right to Drain Water in Gross	3030	ZA,ZC	Christchurch City Council

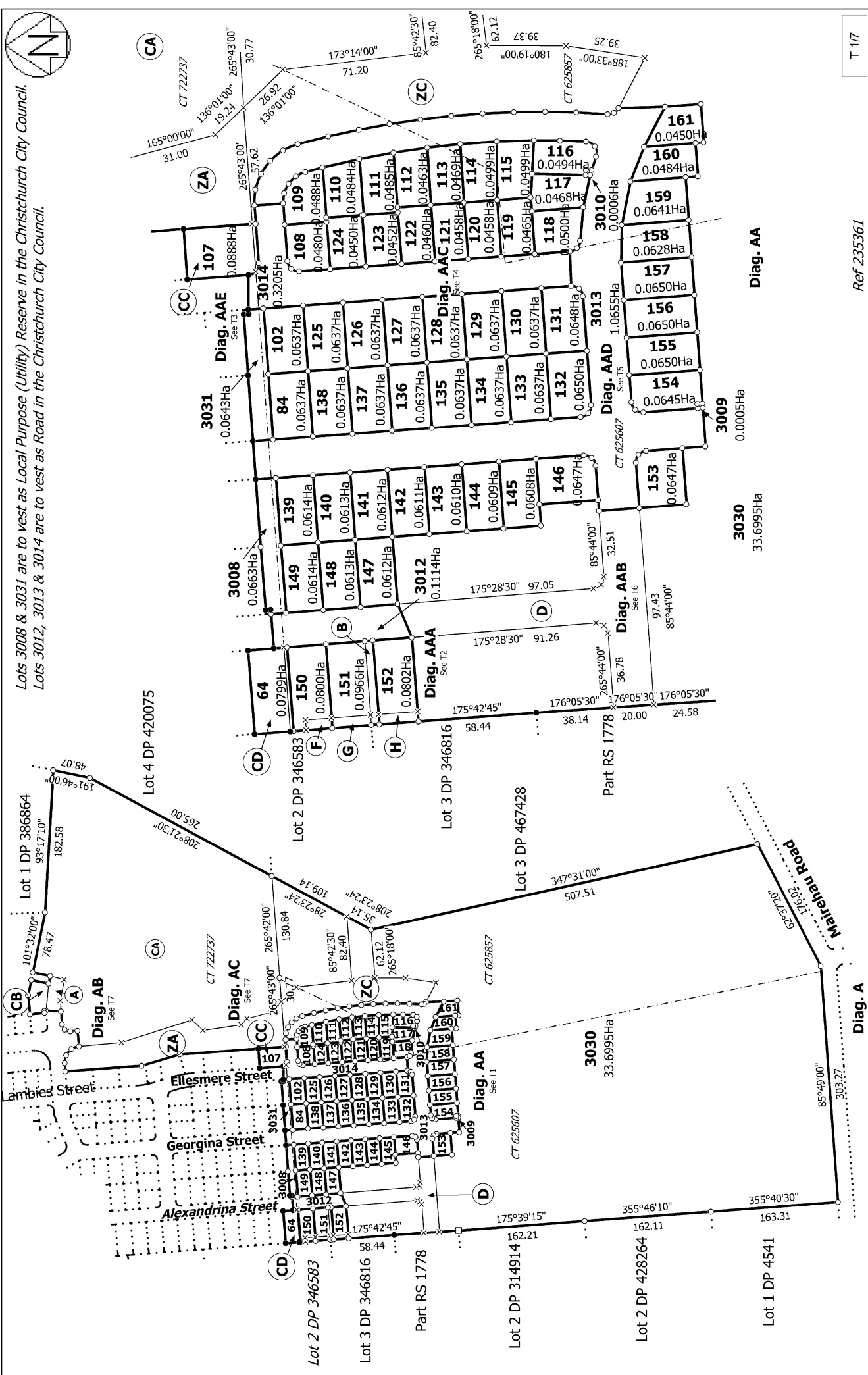
<b>SCHEDULE OF EASEMENTS IN GROSS</b>			
<b>Purpose</b>	<b>Servient Tenement</b>		<b>Grantee</b>
	<b>Lot No</b>	<b>Shown</b>	
Right to Convey Electricity in Gross	3030	D	Orion New Zealand Limited
Right to Drain Water & Sewage, Right to Convey Water, Telecommunications and Computer Media	3030	D	Christchurch City Council

<b>SCHEDULE OF EXISTING EASEMENTS</b>			
<b>Purpose</b>	<b>Servient Tenement</b>		<b>Document</b>
	<b>Lot No</b>	<b>Shown</b>	
Right to Drain Water	3030	A	EI 10376465.4
Right to Convey Electricity in Gross	3030	A	EI 10369087.3

**NOTES:**

Areas F, G, H & B are to be subject to a restrictive covenant.  
 Areas A,CA,ZA,CB,CC & CD are subject to a Land Covenant created by EI 10369087.1.  
 Lots 3008 & 3031 are to vest as Local Purpose (Utility) Reserve in the Christchurch City Council.  
 Lots 3012, 3013 & 3014 are to vest as Road in the Christchurch City Council.  
 Existing Right to Drain Water in Gross shown as ZA over Lot 3030 on DP 494193 (CT 722737) & also described in document EI 10270055.6 is to be extinguished.  
 Existing Right to Drain Water in Gross shown as TI over Lot 3030 on DP 494193 (CT 722737) & also described in document EI 10315516.4 is to be extinguished.  
 Existing Right to Drain Water in Gross shown as ZB over Lot 1 on DP 467428 (CT 625607) & also described in document EI 10270055.6 is to be extinguished.  
 Existing Right to Drain Water in Gross shown as ZF over Lot 1 on DP 467428 (CT 625607) & also described in document EI 10315516.4 is to be extinguished.  
 Existing Right to Drain Water in Gross shown as ZC over Lot 2 on DP 467428 (CT 625857) & also described in document EI 10270055.6 is to be extinguished.

Lots 3008 & 3031 are to vest as Local Purpose (Utility) Reserve in the Christchurch City Council.  
 Lots 3012, 3013 & 3014 are to vest as Road in the Christchurch City Council.

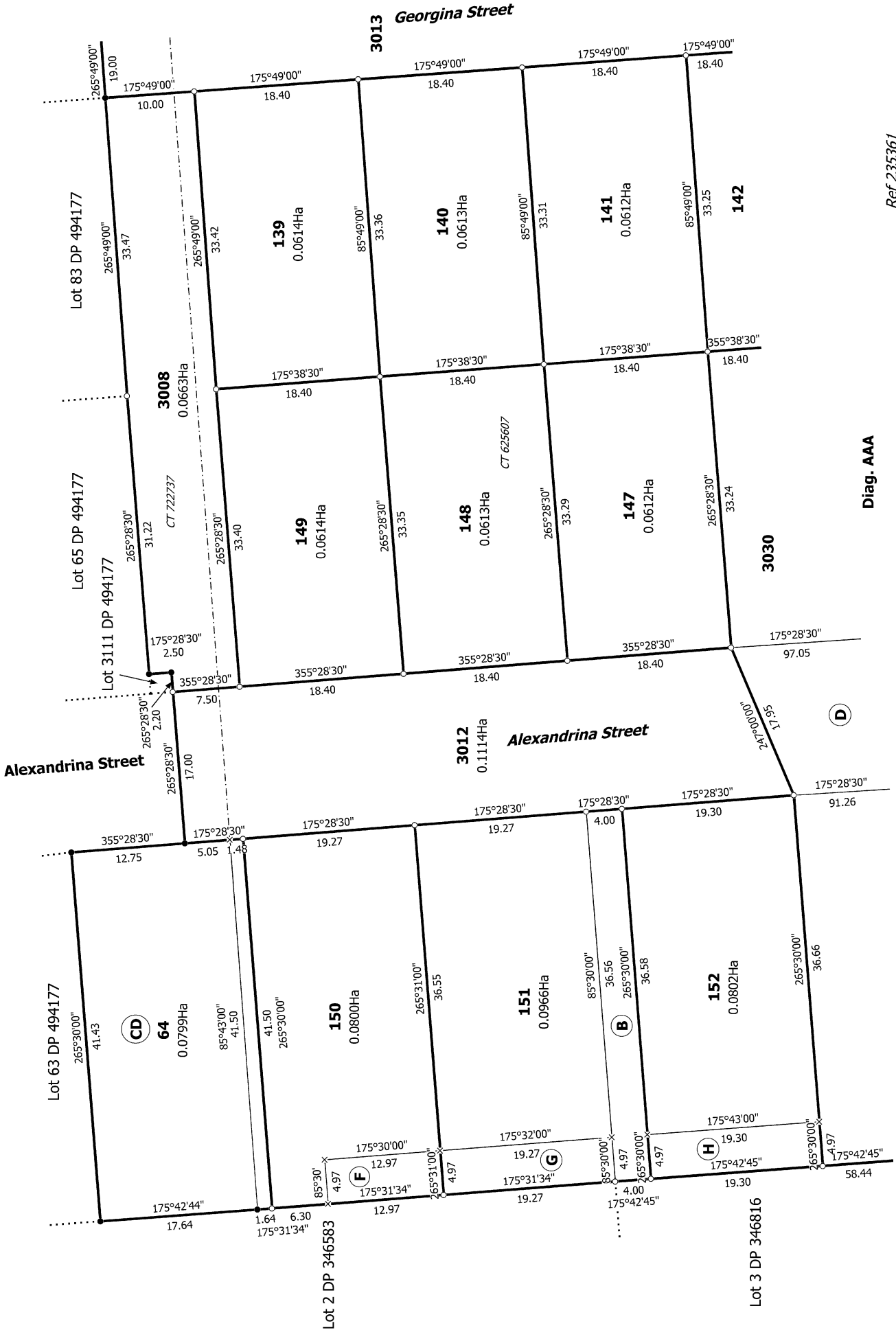


Ref 235361

Surveyor: Keith Alex Ashby  
 Firm: Aurecon (Christchurch)  
 Title Plan  
 DP 500854  
 Deposited on: 4/10/2016

Lots 64, 84, 102, 107-161, 3008 - 3010, 3012 - 3014, 3030 - 3031 Being A  
 Subdivision of Lot 3030 DP 494193 and Lots 1 & 2 DP 467428

Land District: Canterbury  
 Digitally Generated Plan  
 Generated on: 25/10/2016 06:53am | Page 5 of 11



T 2/7

Ref 235361

Diag. AAA

Land District: Canterbury

Lots 64, 84, 102, 107-161, 3008 - 3010, 3012 - 3014, 3030 - 3031 Being A  
Subdivision of Lot 3030 DP 494193 and Lots 1 & 2 DP 467428

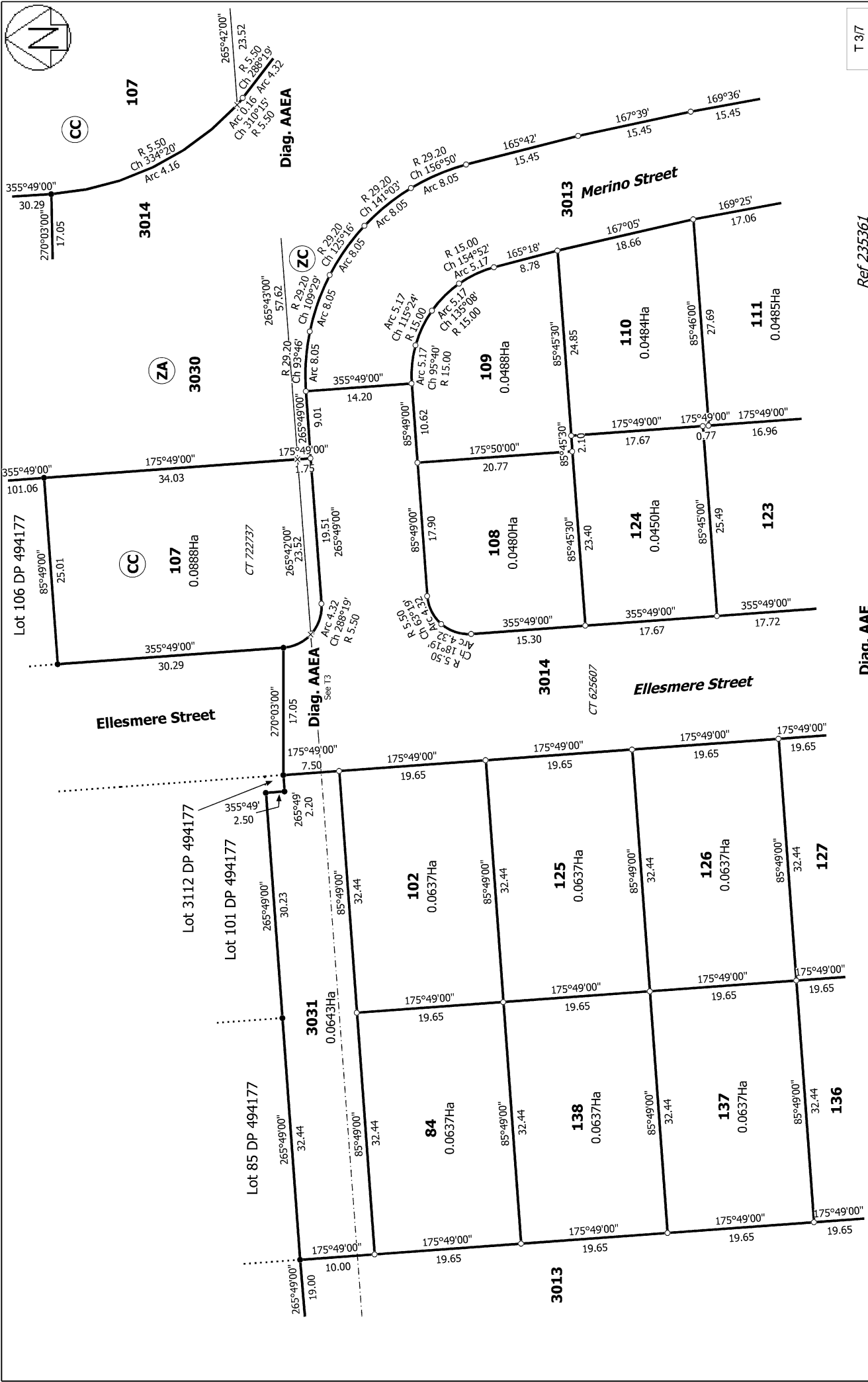
Surveyor: Keith Alex Ashby  
Firm: Aurecon (Christchurch)

Title Plan  
DP 500854

Deposited on: 4/10/2016

Digitally Generated Plan

Generated on: 25/10/2016 06:53am Page 6 of 11

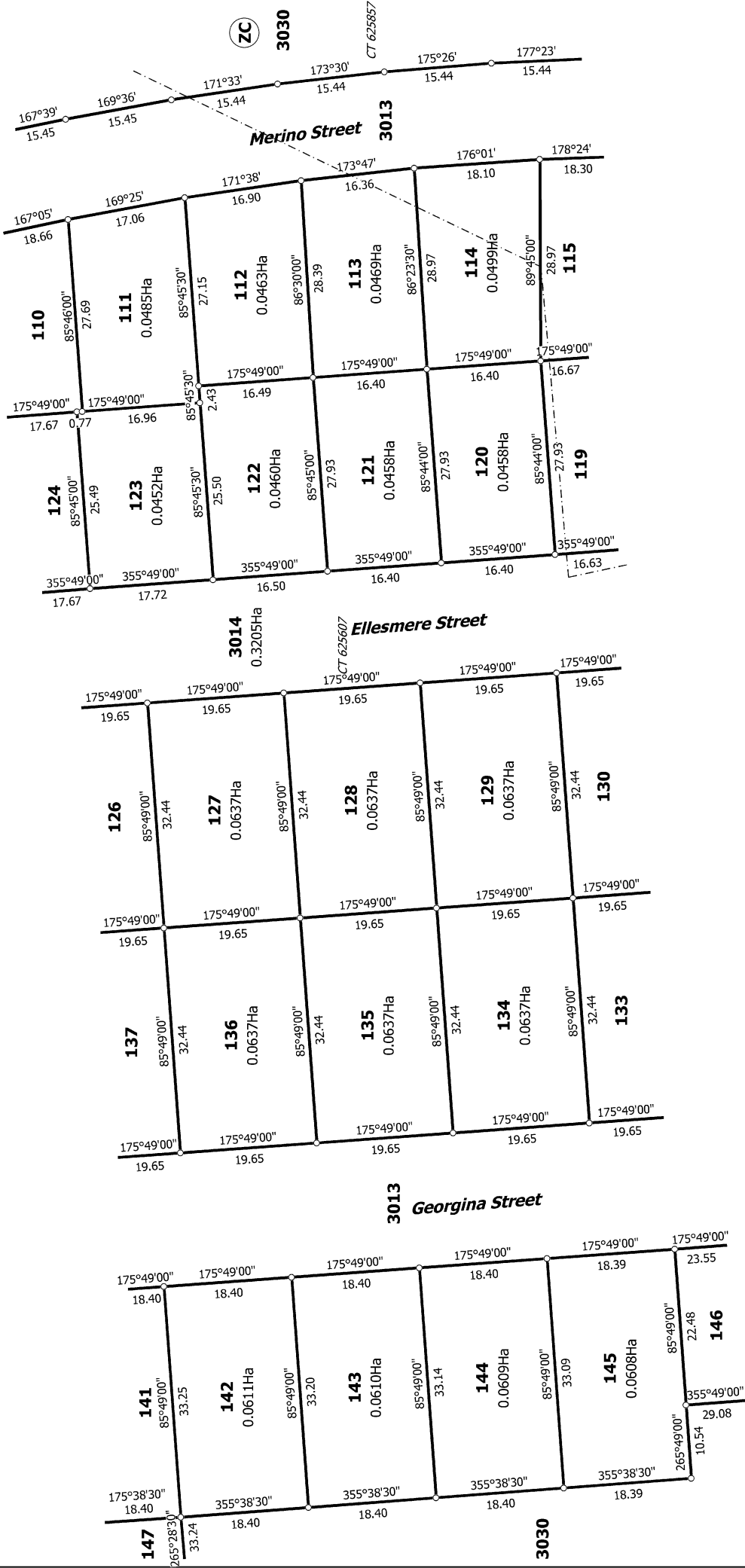


T 3/7

Ref 235361

Diag. AAE

<p>Land District: Canterbury</p> <p><b>Digitally Generated Plan</b></p> <p>Generated on: 25/10/2016 06:53am Page 7 of 11</p>	<p>Lots 64, 84, 102, 107, 161, 3008 - 3010, 3012 - 3014, 3030 - 3031 Being A Subdivision of Lot 3030 DP 494177 and Lots 1 &amp; 2 DP 467428</p>	<p>Surveyor: Keith Alex Ashby</p> <p>Firm: Aurecon (Christchurch)</p>	<p>Title Plan</p> <p>DP 500854</p> <p>Deposited on: 4/10/2016</p>
--	---	---	---



Diag. AAC

T 4/7

Ref 235361

Title Plan  
DP 500854

Deposited on: 4/10/2016

Surveyor: Keith Alex Ashby  
Firm: Aurecon (Christchurch)

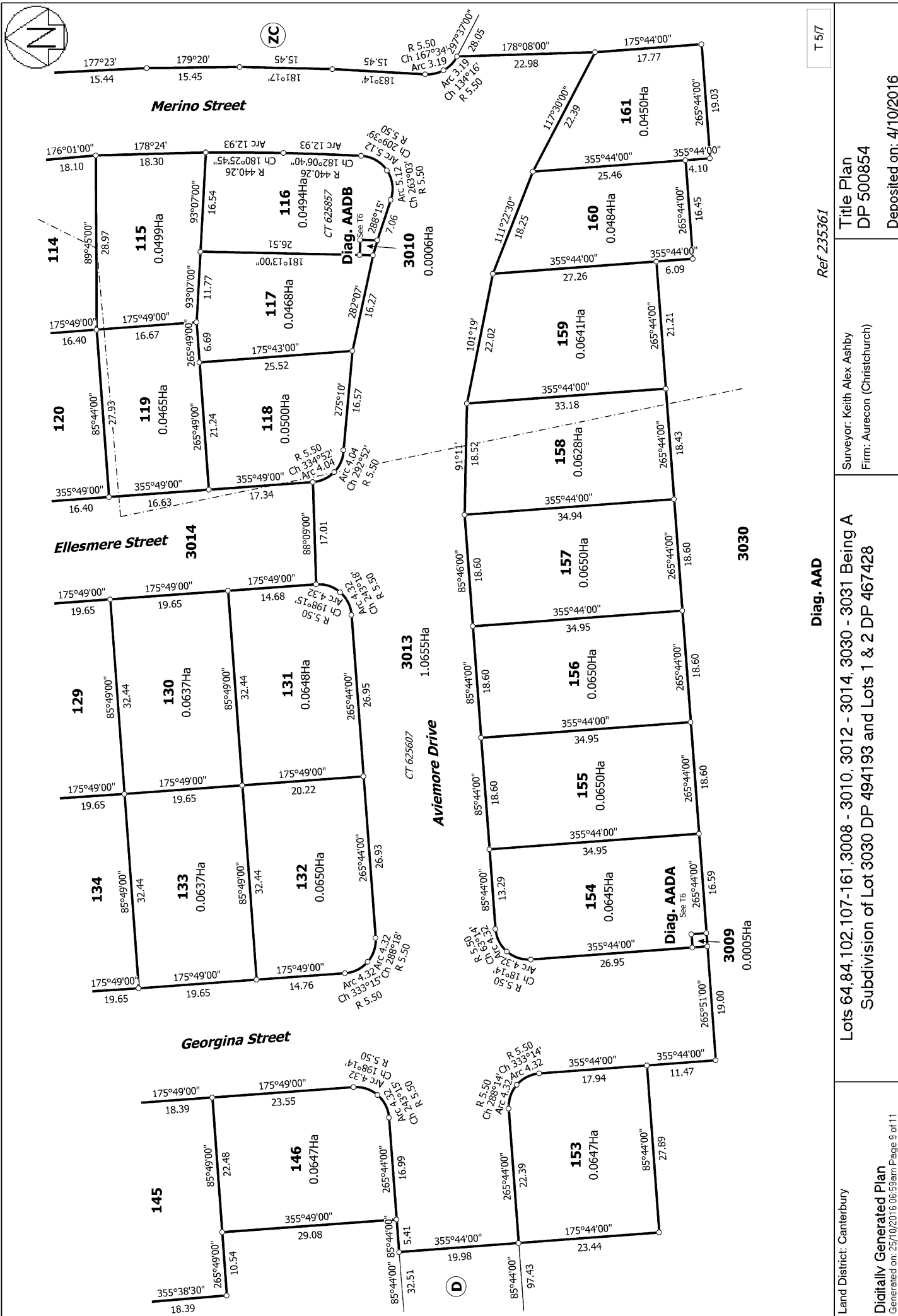
Lots 64, 84, 102, 107-161, 3008 - 3010, 3012 - 3014, 3030 - 3031 Being A  
Subdivision of Lot 3030 DP 494193 and Lots 1 & 2 DP 467428

Land District: Canterbury

Digitally Generated Plan

Generated on: 25/10/2016 06:53am Page 8 of 11





T 5/7

Ref 235361

Diag. AAD

Title Plan  
DP 500854

Surveyor: Keith Alex Ashby  
Firm: Aurecon (Christchurch)

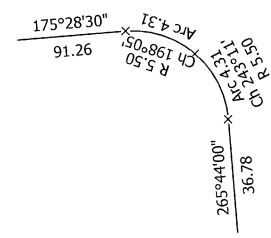
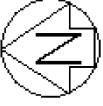
Lots 64, 84, 102, 107, 161, 3008 - 3010, 3012 - 3014, 3030 - 3031 Being A  
Subdivision of Lot 3030 DP 494193 and Lots 1 & 2 DP 467428

Deposited on: 4/10/2016

Land District: Canterbury

Digitally Generated Plan

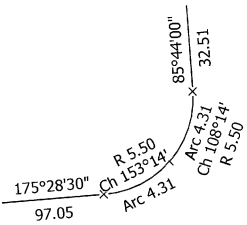
Generated on: 25/10/2016 06:53am Page 9 of 11



3030

(D)

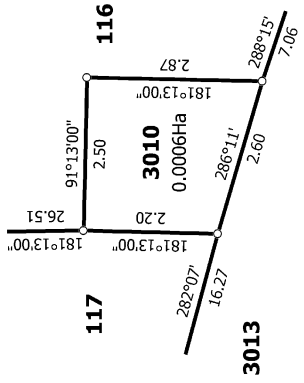
Diag. AAB



3030

(D)

Diag. AAB



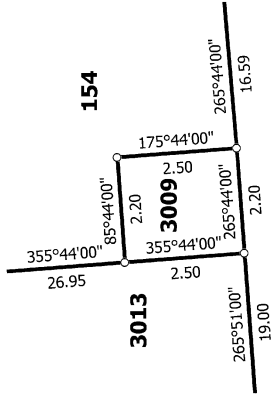
117

116

3013

3010

Diag. AADB



154

3013

3009

3030

Diag. AADA

T 6/7

Ref 235361

Land District: Canterbury

Digitally Generated Plan

Generated on: 25/10/2016 06:53am Page 10 of 11

Lots 64, 84, 102, 107-161, 3008 - 3010, 3012 - 3014, 3030 - 3031 Being A

Subdivision of Lot 3030 DP 494193 and Lots 1 & 2 DP 467428

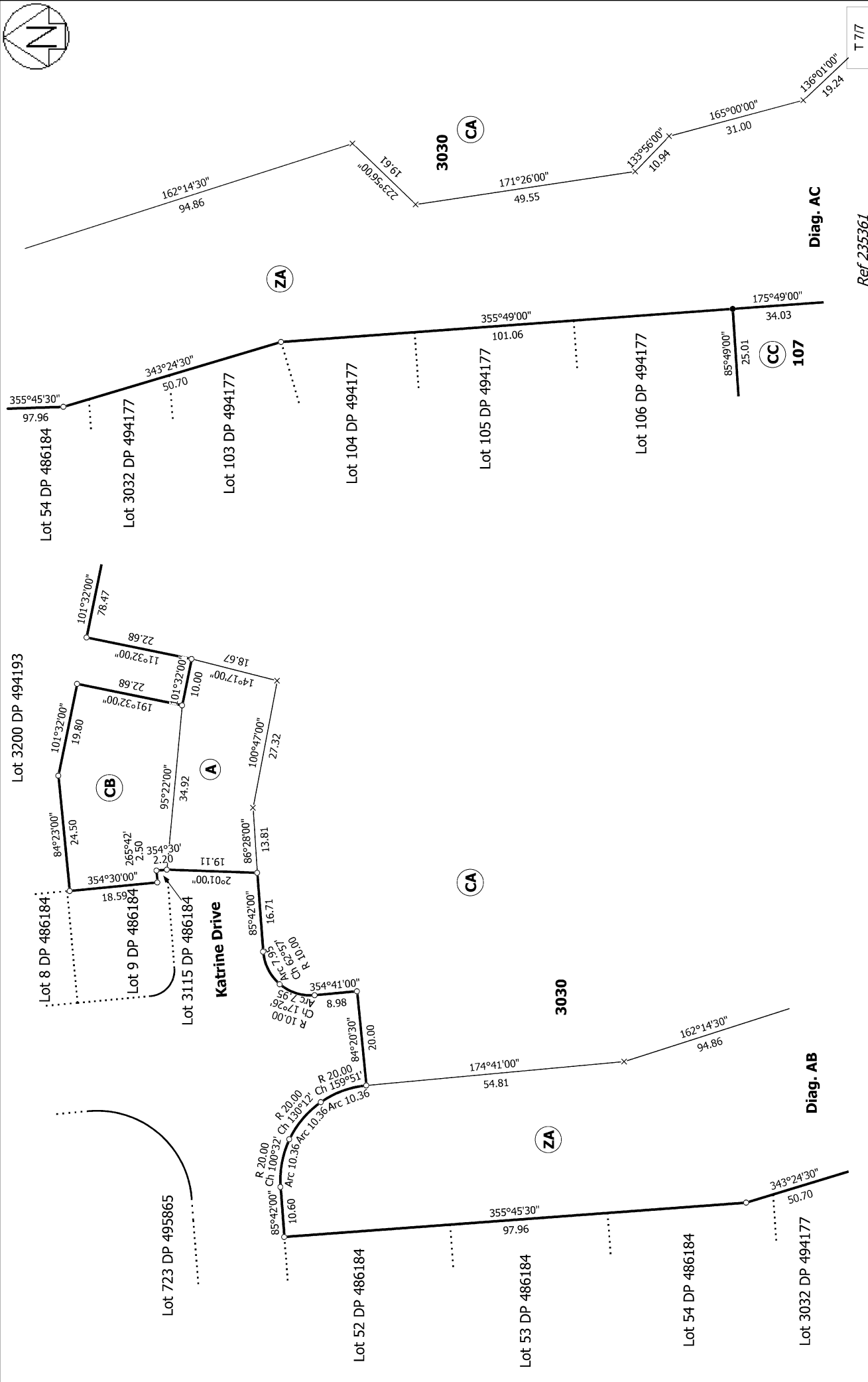
Surveyor: Keith Alex Ashby

Firm: Aurecon (Christchurch)

Title Plan

DP 500854

Deposited on: 4/10/2016



Ref 235361

Land District: Canterbury	Surveyor: Keith Alex Ashby Firm: Aurecon (Christchurch)	Lots 64,84,102,107-161,3008 - 3010, 3012 - 3014, 3030 - 3031 Being A Subdivision of Lot 3030 DP 494193 and Lots 1 & 2 DP 467428	Title Plan DP 500854
<b>Digitally Generated Plan</b> Generated on: 25/10/2016 06:53am Page 11 of 11		Deposited on: 4/10/2016	