

Datum RL7.5

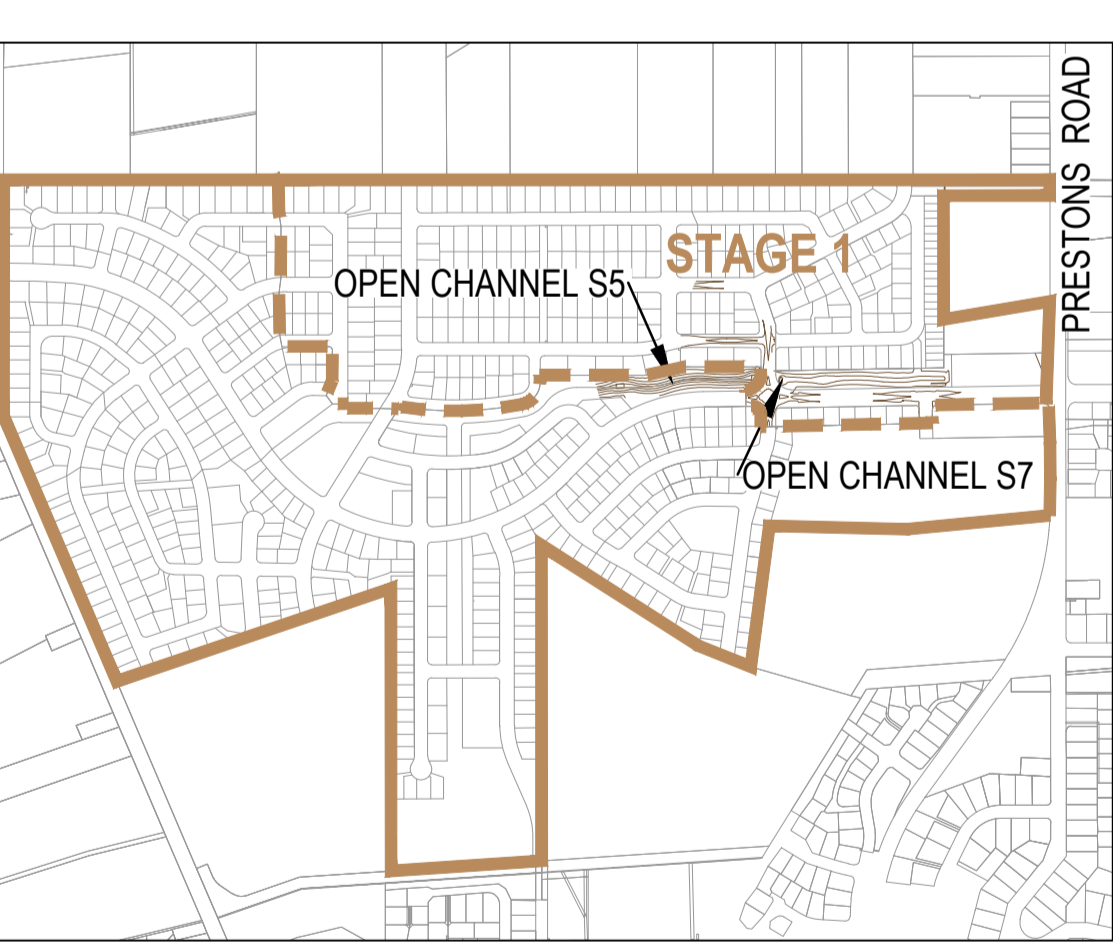
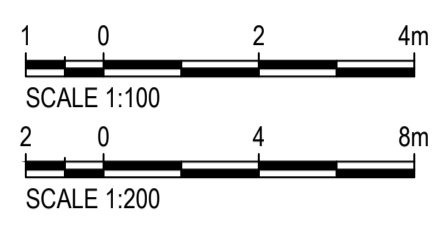
TOP OF EMBANKMENT	12.62	12.62	12.62	12.61	12.6	12.19	11.65	11.54	11.72	11.82	12.21	12.62	12.62	12.61	12.59
BOTTOM OF EMBANKMENT	11.45	10.04	10.02	9.99	9.97	9.95	9.97	11.53	9.97	9.96	9.94	9.95	9.98	10.03	11.62

XS1->XS1
HORIZONTAL 1:200
VERTICAL 1:200

Datum RL7.5

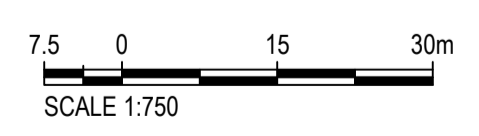
TOP OF EMBANKMENT	12.61	12.61	12.61	12.6	12.46	11.87	11.63	11.49	11.58	12.07	12.54	12.6	12.6	12.61	12.61
BOTTOM OF EMBANKMENT	12.18	10.05	10.09	10.13	10.13	10.12	10.11	11.5	10.13	10.13	10.13	10.13	10.14	10.14	10.15

XS2->XS2
HORIZONTAL 1:200
VERTICAL 1:200



LOCALITY PLAN
SCALE 1:10 000

ASSET ID	mN	mE	ASSET DESCRIPTION
1	812 590.23	395 331.88	STORMWATER CULVERT A1
2	812 615.59	395 332.35	STORMWATER CULVERT A2 (OUTLET)



This AS BUILT drawing has been prepared based on information provided by the contractor.

LEGEND:

- STAGE BOUNDARY
- SUB-STAGE BOUNDARY
- MAJOR CONTOUR
- MINOR CONTOUR
- SECONDARY FLOW PATH
- STORMWATER MAIN
- STORMWATER MANHOLE / OUTLET
- CULVERT INLET / OUTLET



REV	DATE	REVISION DETAILS	APPROVED
1	11/08/15	AS BUILT	W.NEL

DRAWN	M. PEPERE
DESIGNED	K.RITSON
CHECKED	J.WHITE
APPROVED	W.NEL
DATE	11/08/15

PROJECT	PRESTONS SOUTH
TITLE	STAGE 1 STORMWATER CHANNEL SHEET 1 OF 1

AS BUILT	PROJECT No.	235361
AS SHOWN	SCALE	A1
DRAWING No.	REV	1
AB-PS-S1-DP-01		