



Title Plan - LT 539374

Draft - subject to council and LINZ approval

Survey Number LT 539374
Surveyor Reference 235361-068 Stage T2, T3 & S2
Surveyor Keith Alex Ashby
Survey Firm Aurecon (Christchurch)
Surveyor Declaration

Survey Details

Dataset Description Lots 354-370, 410-420, 439-456, 334-339, 374-375, 3078, 3111, 3121, 3120, 3030 Being Subdivision of Lot 3030 DP 535660

Status Initiated

Land District Canterbury **Survey Class** Class A

Submitted Date **Survey Approval Date**
Deposit Date

Territorial Authorities

Christchurch City

Comprised In

RT 891339

Created Parcels

Parcels	Parcel Intent	Area	RT Reference
Lot 365 Deposited Plan 539374	Fee Simple Title	0.0486 Ha	905737
Lot 366 Deposited Plan 539374	Fee Simple Title	0.0491 Ha	905740
Lot 367 Deposited Plan 539374	Fee Simple Title	0.0496 Ha	905738
Lot 370 Deposited Plan 539374	Fee Simple Title	0.0457 Ha	905741
Lot 410 Deposited Plan 539374	Fee Simple Title	0.0459 Ha	905751
Lot 411 Deposited Plan 539374	Fee Simple Title	0.0469 Ha	905752
Lot 412 Deposited Plan 539374	Fee Simple Title	0.0469 Ha	905753
Lot 413 Deposited Plan 539374	Fee Simple Title	0.0469 Ha	905754
Lot 414 Deposited Plan 539374	Fee Simple Title	0.0492 Ha	905755
Lot 415 Deposited Plan 539374	Fee Simple Title	0.0471 Ha	905756
Lot 416 Deposited Plan 539374	Fee Simple Title	0.0497 Ha	905757
Lot 417 Deposited Plan 539374	Fee Simple Title	0.0460 Ha	905758
Lot 418 Deposited Plan 539374	Fee Simple Title	0.0452 Ha	905759
Lot 419 Deposited Plan 539374	Fee Simple Title	0.0468 Ha	905760
Lot 420 Deposited Plan 539374	Fee Simple Title	0.0493 Ha	905761
Lot 439 Deposited Plan 539374	Fee Simple Title	0.0500 Ha	905762
Lot 440 Deposited Plan 539374	Fee Simple Title	0.0473 Ha	905763
Lot 441 Deposited Plan 539374	Fee Simple Title	0.0614 Ha	905764
Lot 442 Deposited Plan 539374	Fee Simple Title	0.0493 Ha	905765
Lot 443 Deposited Plan 539374	Fee Simple Title	0.0482 Ha	905766
Lot 444 Deposited Plan 539374	Fee Simple Title	0.0489 Ha	905767
Lot 445 Deposited Plan 539374	Fee Simple Title	0.0489 Ha	905768
Lot 446 Deposited Plan 539374	Fee Simple Title	0.0489 Ha	905769

Title Plan - LT 539374

Created Parcels

Parcels	Parcel Intent	Area	RT Reference
Lot 447 Deposited Plan 539374	Fee Simple Title	0.0465 Ha	905770
Lot 448 Deposited Plan 539374	Fee Simple Title	0.0457 Ha	905771
Lot 449 Deposited Plan 539374	Fee Simple Title	0.0464 Ha	905772
Lot 450 Deposited Plan 539374	Fee Simple Title	0.0464 Ha	905773
Lot 451 Deposited Plan 539374	Fee Simple Title	0.0464 Ha	905774
Lot 452 Deposited Plan 539374	Fee Simple Title	0.0464 Ha	905775
Lot 453 Deposited Plan 539374	Fee Simple Title	0.0464 Ha	905776
Lot 454 Deposited Plan 539374	Fee Simple Title	0.0496 Ha	905777
Lot 455 Deposited Plan 539374	Fee Simple Title	0.0485 Ha	905778
Lot 456 Deposited Plan 539374	Fee Simple Title	0.0600 Ha	905779
Lot 3078 Deposited Plan 539374	Vesting on Deposit for Local Purpose Reserve	0.0454 Ha	905780
Lot 3111 Deposited Plan 539374	Vesting on Deposit for Road	0.4710 Ha	
Lot 3121 Deposited Plan 539374	Vesting on Deposit for Road	0.3766 Ha	
Area D Deposited Plan 539374	Easement		
Lot 338 Deposited Plan 539374	Fee Simple Title	0.0450 Ha	905781
Lot 337 Deposited Plan 539374	Fee Simple Title	0.0450 Ha	905782
Lot 336 Deposited Plan 539374	Fee Simple Title	0.0450 Ha	905783
Lot 335 Deposited Plan 539374	Fee Simple Title	0.0450 Ha	905784
Lot 334 Deposited Plan 539374	Fee Simple Title	0.0450 Ha	905785
Lot 354 Deposited Plan 539374	Fee Simple Title	0.0471 Ha	905786
Lot 355 Deposited Plan 539374	Fee Simple Title	0.0498 Ha	905787
Lot 356 Deposited Plan 539374	Fee Simple Title	0.0497 Ha	905788
Lot 357 Deposited Plan 539374	Fee Simple Title	0.0489 Ha	905789
Lot 358 Deposited Plan 539374	Fee Simple Title	0.0452 Ha	905790
Lot 359 Deposited Plan 539374	Fee Simple Title	0.0450 Ha	905791
Lot 360 Deposited Plan 539374	Fee Simple Title	0.0450 Ha	905792
Lot 375 Deposited Plan 539374	Fee Simple Title	0.0475 Ha	905793
Lot 364 Deposited Plan 539374	Fee Simple Title	0.0499 Ha	905794
Lot 363 Deposited Plan 539374	Fee Simple Title	0.0460 Ha	905795
Lot 361 Deposited Plan 539374	Fee Simple Title	0.0459 Ha	905796
Lot 374 Deposited Plan 539374	Fee Simple Title	0.0462 Ha	905797
Lot 3120 Deposited Plan 539374	Vesting on Deposit for Road	0.3252 Ha	
Lot 3030 Deposited Plan 539374	Fee Simple Title	9.4676 Ha	905798
Lot 368 Deposited Plan 539374	Fee Simple Title	0.0491 Ha	905799
Lot 362 Deposited Plan 539374	Fee Simple Title	0.0456 Ha	905800
Lot 369 Deposited Plan 539374	Fee Simple Title	0.0491 Ha	905801
Lot 339 Deposited Plan 539374	Fee Simple Title	0.0450 Ha	905802
Area A Deposited Plan 539374	Easement		
Total Area		13.2639 Ha	

Schedule / Memorandum

Land Registration District	Plan Number	Surveyor Ref
Canterbury	DP 539374	235361-068 Stage 2 T2,T3 & S2

Territorial Authority (the Council)	Council Ref
Christchurch City Council	RMA/2015/2023/A

SCHEDULE OF EASEMENTS IN GROSS			
Purpose	Servient Tenement (Burdened Land)		Grantee
	Lot No	Shown	
Right to Convey Electricity in Gross	3030	A	Orion New Zealand Limited

SCHEDULE OF EXISTING EASEMENTS			
Purpose	Servient Tenement (Burdened Land)		Document
	Lot No	Shown	
Right to Convey Electricity in Gross	3030	D	11352529.3

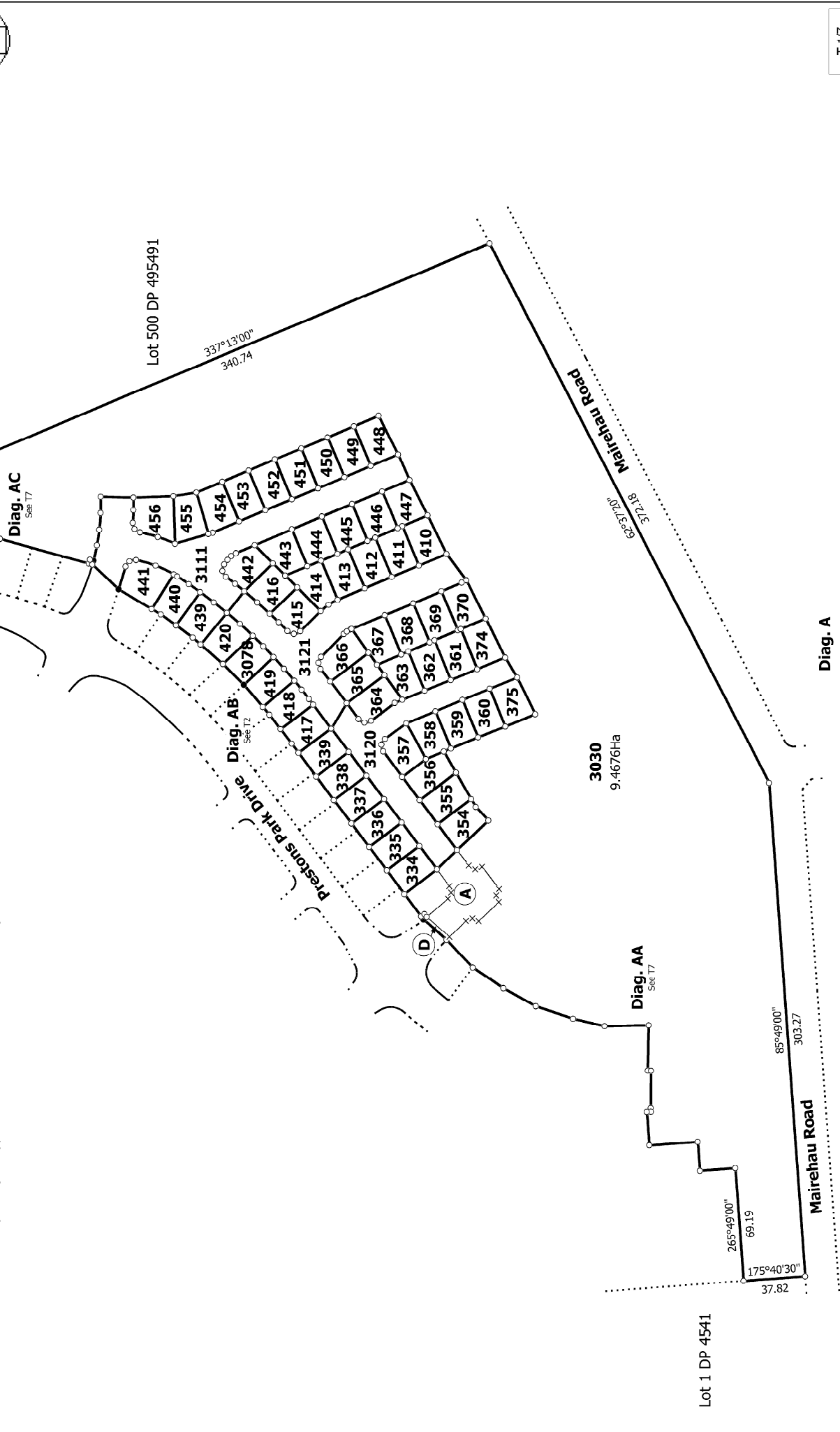
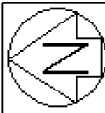
NOTES:

Lots 3111, 3120 and 3121 are to vest as Road in the Christchurch City Council.

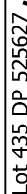
Lot 3078 is to vest as Local Purpose (Utility) Reserve in the Christchurch City Council.

Existing Right to Convey Electricity in Gross shown as A on DP 533870 over Lot 3030 on DP 533870 (RT 879300) and also described in EI 11269487.6 is to be surrendered.

Note:
Lots 3111, 3120 & 3121 are to vest as Road in the Christchurch City Council.
Lot 3078 is to vest as Local Purpose (Utility) Reserve in the Christchurch City Council.



Land District: Canterbury		Ref 235361-068	
Digitally Generated Plan Generated on: 04/09/2019 11:57am Page 1 of 10		Surveyor: Keith Alex Ashby Firm: Aurecon (Christchurch)	Title Plan LT 539374 DRAFT



T 2/7

Ref 235361-068

Land District: Canterbury

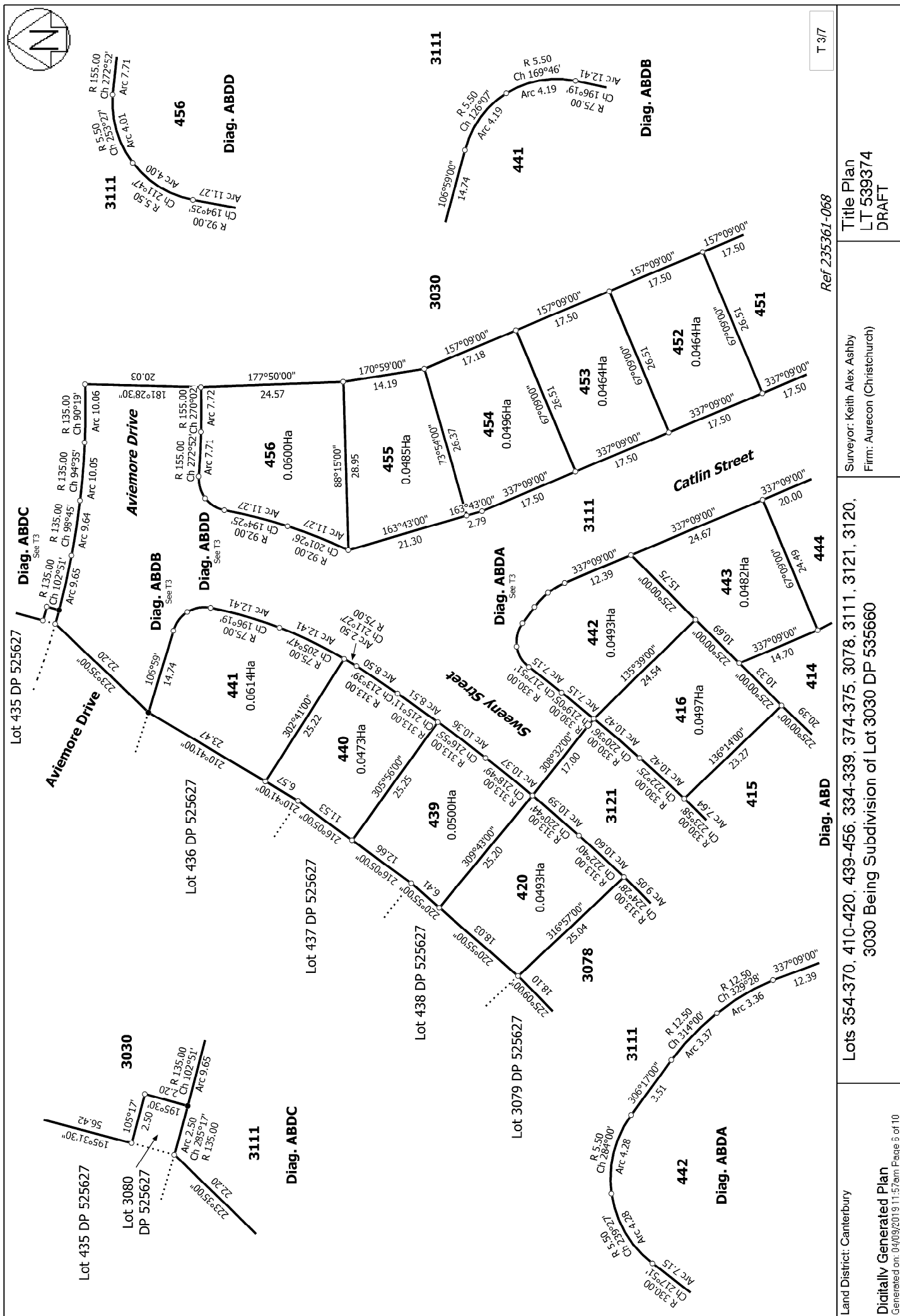
Lots 354-370, 410-420, 439-456, 334-339, 374-375, 3078, 3111, 3121, 3120,
3030 Being Subdivision of Lot 3030 DP 535660

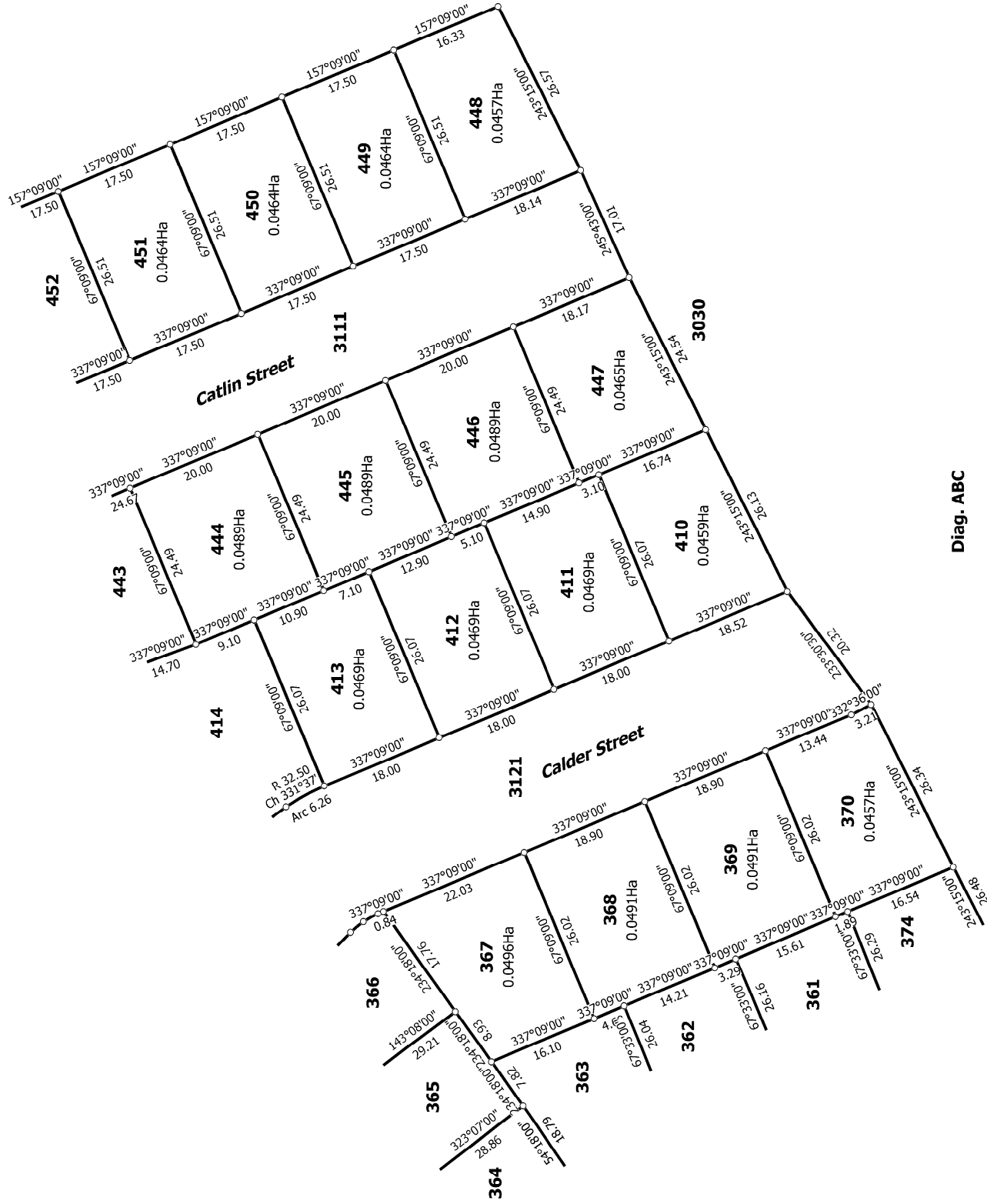
Surveyor: Keith Alex Ashby
Firm: Aurecon (Christchurch)

Title Plan
LT 539374
DRAFT

Digitally Generated Plan

Digitally Generated File
Generated on: 04/09/2019 11:57am Page 5 of 10





Diag. ABC

T 4/7

Ref 235361-068

Land District: Canterbury

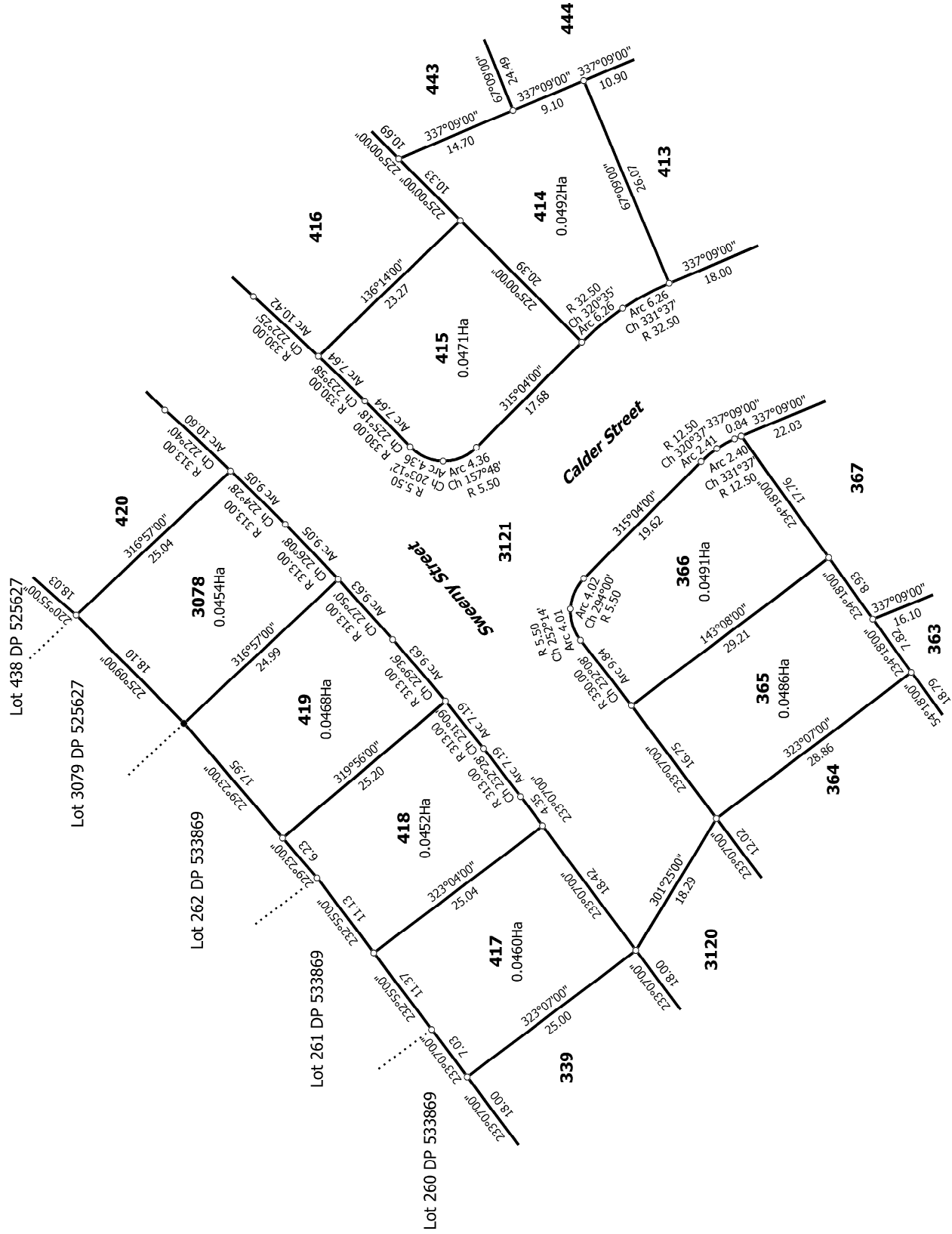
Digitally Generated Plan

Generated on: 04/09/2019 11:57am Page 7 of 10

Lots 354-370, 410-420, 439-456, 334-339, 374-375, 3078, 3111, 3121, 3120,
3030 Being Subdivision of Lot 3030 DP 535660

Surveyor: Keith Alex Ashby
Firm: Aurecon (Christchurch)

Title Plan
LT 539374
DRAFT



Diag. ABB

Ref 235361-068

T 5/7

Land District: Canterbury

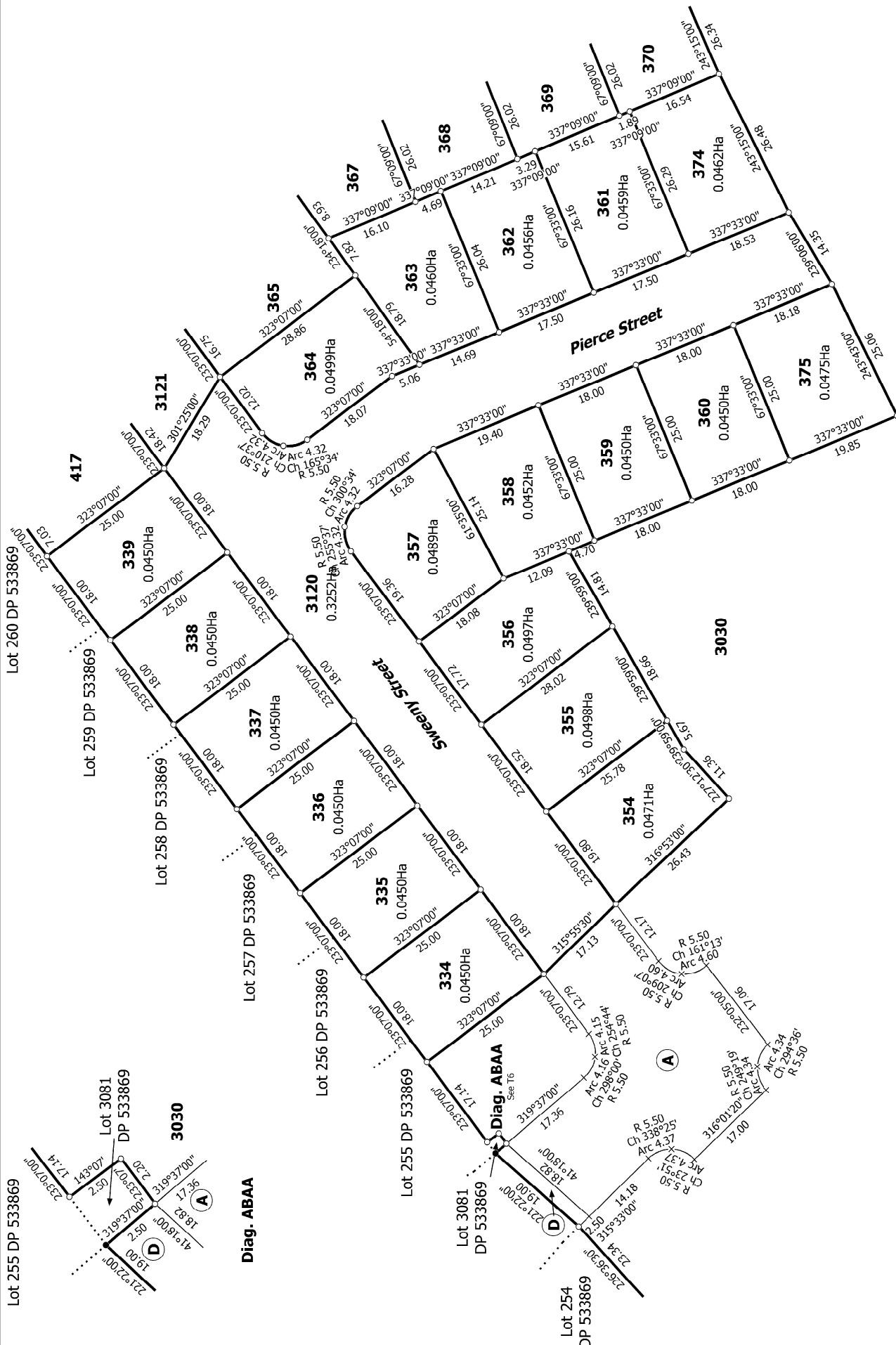
Lots 354-370, 410-420, 439-456, 334-339, 374-375, 3078, 3111, 3121, 3120,
3030 Being Subdivision of Lot 3030 DP 535660

Surveyor: Keith Alex Ashby
Firm: Aurecon (Christchurch)

Title Plan
LT 539374
DRAFT

Digitally Generated Plan

Generated on: 04/09/2019 11:57am Page 3 of 10



T 6/7

Ref 235361-068

Surveyor: Keith Alex Ashby
Firm: Aurecon (Christchurch)

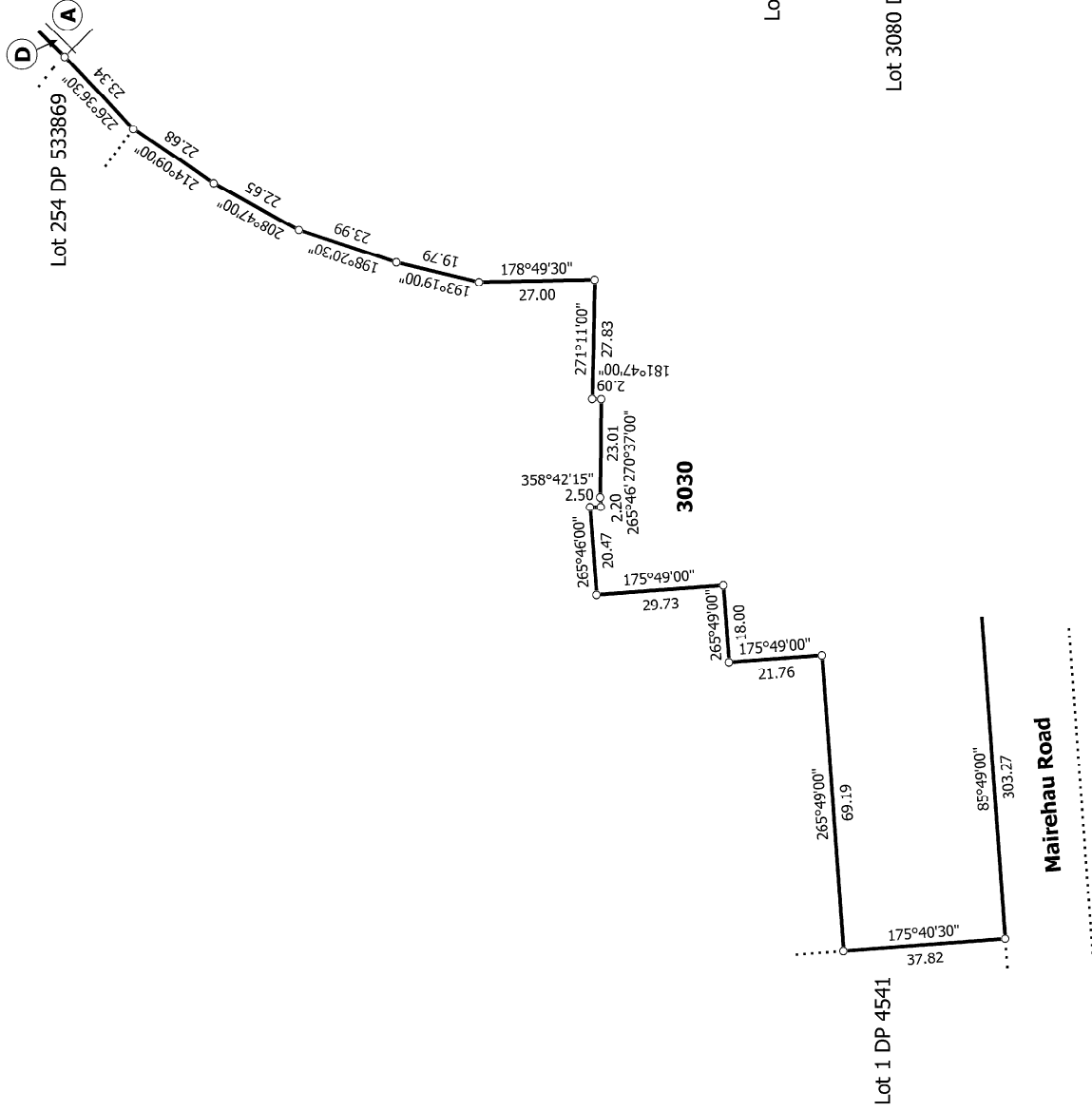
Title Plan
LT 539374
DRAFT

Lots 354-370, 410-420, 439-456, 334-339, 374-375, 3078, 3111, 3121, 3120,
3030 Being Subdivision of Lot 3030 DP 535660

Land District: Canterbury

Digitally Generated Plan

Generated on: 04/09/2019 11:57am Page 9 of 10



Diag. AA

Diag. AC

Ref 235361-068

T 7/7