



Title Plan - LT 512762

Draft - Subject to final approval

Survey Number	LT 512762
Surveyor Reference	235361 - Stage 2x Prestons Park
Surveyor	Keith Alex Ashby
Survey Firm	Aurecon (Christchurch)
Surveyor Declaration	

Survey Details

Dataset Description	Lots 606, 608 - 638, 641 - 652, 3071, 3094 - 3096 and 3115 Being Subdivision of Lot 3031 DP 509330		
Status	Initiated		
Land District	Canterbury	Survey Class	Class A
Submitted Date		Survey Approval Date	
		Deposit Date	

Territorial Authorities

Christchurch City

Comprised In

CT 778767

Created Parcels

Parcels	Parcel Intent	Area	CT Reference
Lot 642 Deposited Plan 512762	Fee Simple Title	0.0450 Ha	790748
Lot 643 Deposited Plan 512762	Fee Simple Title	0.0477 Ha	790749
Lot 644 Deposited Plan 512762	Fee Simple Title	0.0498 Ha	790750
Lot 645 Deposited Plan 512762	Fee Simple Title	0.0450 Ha	790751
Lot 646 Deposited Plan 512762	Fee Simple Title	0.0450 Ha	790752
Lot 647 Deposited Plan 512762	Fee Simple Title	0.0450 Ha	790753
Lot 648 Deposited Plan 512762	Fee Simple Title	0.0450 Ha	790754
Lot 649 Deposited Plan 512762	Fee Simple Title	0.0450 Ha	790755
Lot 650 Deposited Plan 512762	Fee Simple Title	0.0450 Ha	790756
Lot 651 Deposited Plan 512762	Fee Simple Title	0.0450 Ha	790757
Lot 652 Deposited Plan 512762	Fee Simple Title	0.0495 Ha	790758
Lot 3071 Deposited Plan 512762	Vesting on Deposit for Local Purpose Reserve	0.0303 Ha	790759
Lot 606 Deposited Plan 512762	Fee Simple Title	0.0637 Ha	790715
Lot 608 Deposited Plan 512762	Fee Simple Title	0.0647 Ha	790716
Lot 609 Deposited Plan 512762	Fee Simple Title	0.0644 Ha	790717
Lot 610 Deposited Plan 512762	Fee Simple Title	0.0644 Ha	790718
Lot 611 Deposited Plan 512762	Fee Simple Title	0.0644 Ha	790719
Lot 615 Deposited Plan 512762	Fee Simple Title	0.0480 Ha	790723
Lot 616 Deposited Plan 512762	Fee Simple Title	0.0483 Ha	790724
Lot 617 Deposited Plan 512762	Fee Simple Title	0.0473 Ha	790725
Lot 618 Deposited Plan 512762	Fee Simple Title	0.0452 Ha	790726
Lot 619 Deposited Plan 512762	Fee Simple Title	0.0452 Ha	790727

Title Plan - LT 512762

Created Parcels

Parcels	Parcel Intent	Area	CT Reference
Lot 620 Deposited Plan 512762	Fee Simple Title	0.0484 Ha	790728
Lot 623 Deposited Plan 512762	Fee Simple Title	0.0483 Ha	790731
Lot 625 Deposited Plan 512762	Fee Simple Title	0.0470 Ha	790733
Lot 626 Deposited Plan 512762	Fee Simple Title	0.0611 Ha	790734
Lot 627 Deposited Plan 512762	Fee Simple Title	0.0488 Ha	790735
Lot 628 Deposited Plan 512762	Fee Simple Title	0.0500 Ha	790736
Lot 629 Deposited Plan 512762	Fee Simple Title	0.0499 Ha	790737
Lot 630 Deposited Plan 512762	Fee Simple Title	0.0498 Ha	790738
Lot 631 Deposited Plan 512762	Fee Simple Title	0.0498 Ha	790739
Lot 632 Deposited Plan 512762	Fee Simple Title	0.0489 Ha	790740
Lot 633 Deposited Plan 512762	Fee Simple Title	0.0478 Ha	790741
Lot 634 Deposited Plan 512762	Fee Simple Title	0.0470 Ha	790742
Lot 635 Deposited Plan 512762	Fee Simple Title	0.0485 Ha	790743
Lot 636 Deposited Plan 512762	Fee Simple Title	0.0487 Ha	790744
Lot 637 Deposited Plan 512762	Fee Simple Title	0.0490 Ha	790745
Lot 638 Deposited Plan 512762	Fee Simple Title	0.0500 Ha	790746
Lot 3096 Deposited Plan 512762	Vesting on Deposit for Recreation Reserve (Territorial Authority)	0.4257 Ha	790761
Lot 613 Deposited Plan 512762	Fee Simple Title	0.0712 Ha	790721
Lot 614 Deposited Plan 512762	Fee Simple Title	0.0617 Ha	790722
Lot 612 Deposited Plan 512762	Fee Simple Title	0.0640 Ha	790720
Lot 624 Deposited Plan 512762	Fee Simple Title	0.0476 Ha	790732
Lot 622 Deposited Plan 512762	Fee Simple Title	0.0635 Ha	790730
Lot 621 Deposited Plan 512762	Fee Simple Title	0.0488 Ha	790729
Area C Deposited Plan 512762	Easement		
Lot 3095 Deposited Plan 512762	Vesting on Deposit for Local Purpose Reserve	0.0201 Ha	790760
Area A Deposited Plan 512762	Easement		
Area B Deposited Plan 512762	Easement		
Area D Deposited Plan 512762	Easement		
Lot 641 Deposited Plan 512762	Fee Simple Title	0.0450 Ha	790747
Lot 3094 Deposited Plan 512762	Vesting on Deposit for Road	0.4594 Ha	
Lot 3115 Deposited Plan 512762	Vesting on Deposit for Road	0.6440 Ha	
Area CA Deposited Plan 512762	Land Covenant		
Area CB Deposited Plan 512762	Land Covenant		
Area CC Deposited Plan 512762	Land Covenant		
Area CD Deposited Plan 512762	Land Covenant		
Area CE Deposited Plan 512762	Land Covenant		
Area CF Deposited Plan 512762	Land Covenant		
Area CG Deposited Plan 512762	Land Covenant		
Area CH Deposited Plan 512762	Land Covenant		



Title Plan - LT 512762

Created Parcels

Parcels	Parcel Intent	Area	CT Reference
Area CI Deposited Plan 512762	Land Covenant		
Area CJ Deposited Plan 512762	Land Covenant		
Area CK Deposited Plan 512762	Land Covenant		
Area CL Deposited Plan 512762	Land Covenant		
Total Area		<hr/> 3.8369 Ha	

Schedule / Memorandum

Land Registration District	Plan Number	Surveyor Ref
Canterbury	DP 512762	235361 – Stage 2x

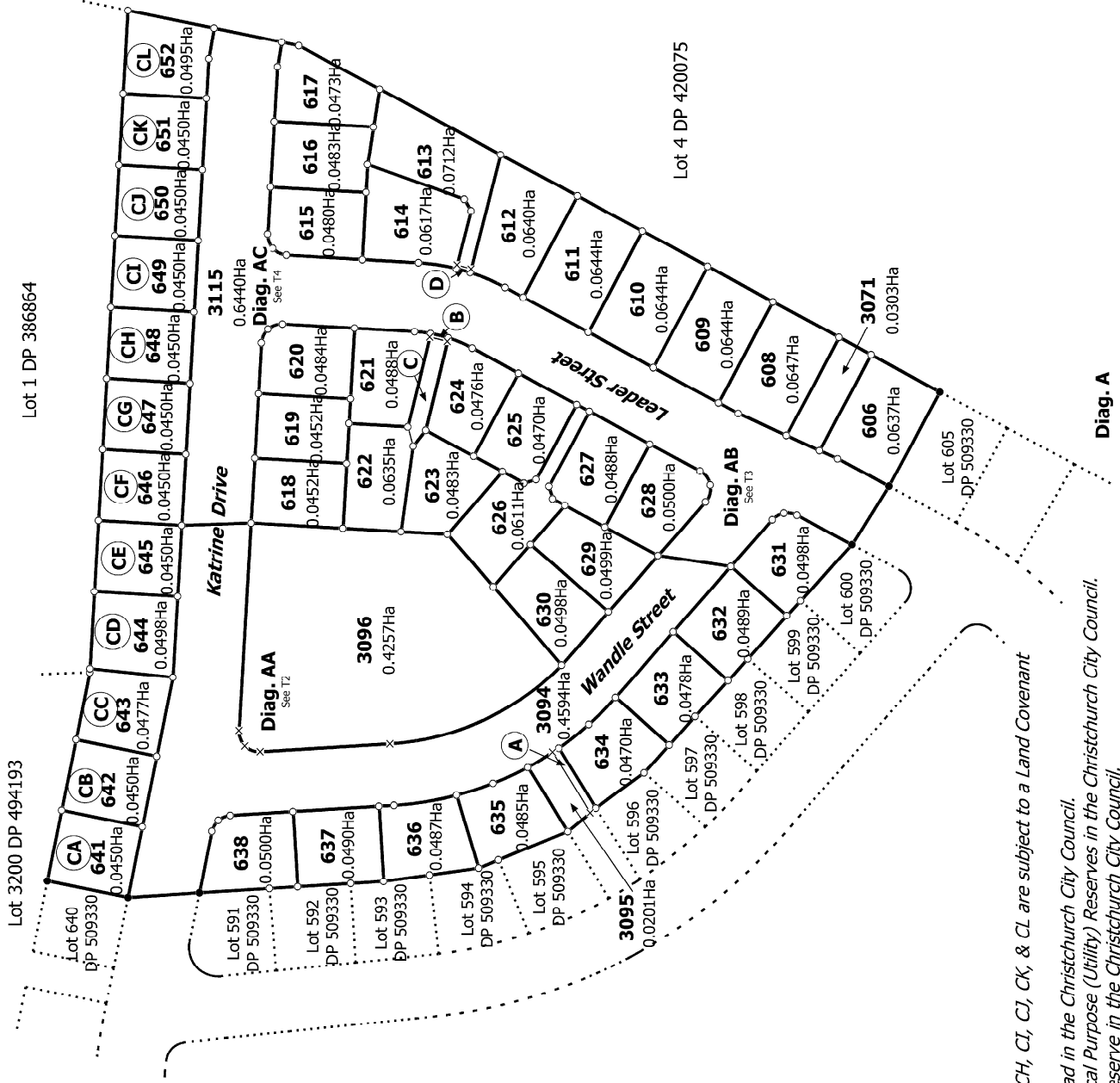
Territorial Authority (the Council)	Council Ref
Christchurch City Council	RMA92022731

MEMORANDUM OF EASEMENT IN GROSS			
Purpose	Servient Tenement		Grantee
	Lot No	Shown	
Right to Convey Electricity in Gross	3095	A	Orion New Zealand Limited

MEMORANDUM OF EASEMENTS			
Purpose	Servient Tenement		Dominant Tenement
	Lot No	Shown	
Right to Convey Electricity in Gross	622	B	Lot 621
	613	D	Lot 614
Right of Way, Right to Drain Water & Sewage, Right to Convey Water, Telecommunications and Computer Media	622	B, C	623

NOTES:

Areas CA, CB, CC, CD, CE, CF, CG, CH, CI, CJ, CK, & CL are to be subject to a Land Covenant.
 Lots 3094 & 3115 are to vest as Road in the Christchurch City Council.
 Lots 3071 & 3095 are to vest as Local Purpose (Utility) Reserves in the Christchurch City Council.
 Lot 3096 is to vest as Recreation Reserve in the Christchurch City Council.
 Land Covenant area CA as shown on DP 509330 and as described in document EI 10369087.1 is to be surrendered.



Note:
Areas CA, CB, CC, CD, CE, CF, CG, CH, CI, CJ, CK, & CL are subject to a Land Covenant created by EI 10369087.1.
Lots 3094 & 3115 are to vest as Road in the Christchurch City Council.
Lots 3071 & 3095 are to vest as Local Purpose (Utility) Reserves in the Christchurch City Council.
Lot 3096 is to vest as Recreation Reserve in the Christchurch City Council.

Ref 235361

Diag. A

T 1/4

Land District: Canterbury

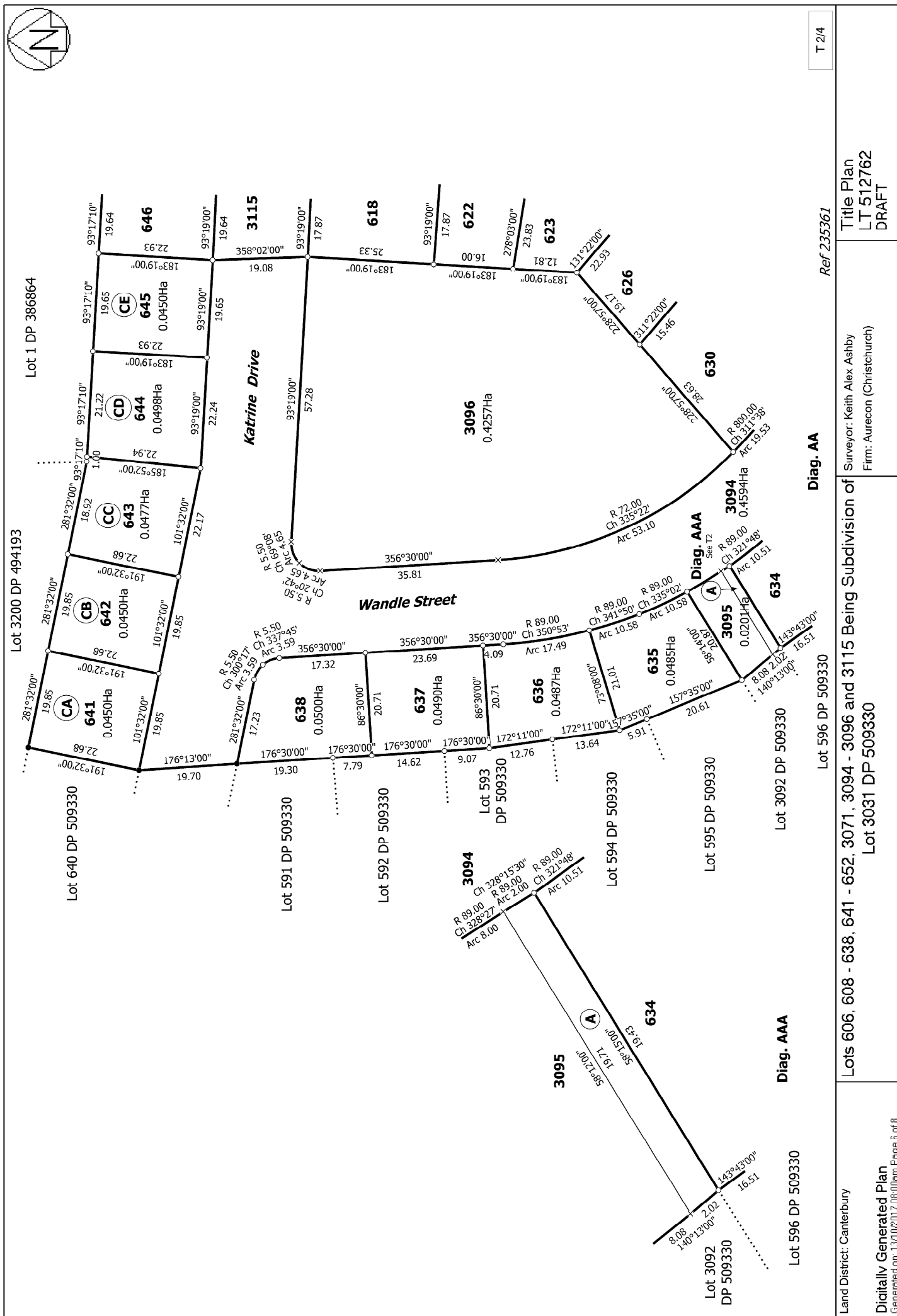
Surveyor: Keith Alex Ashby
Firm: Aurecon (Christchurch)

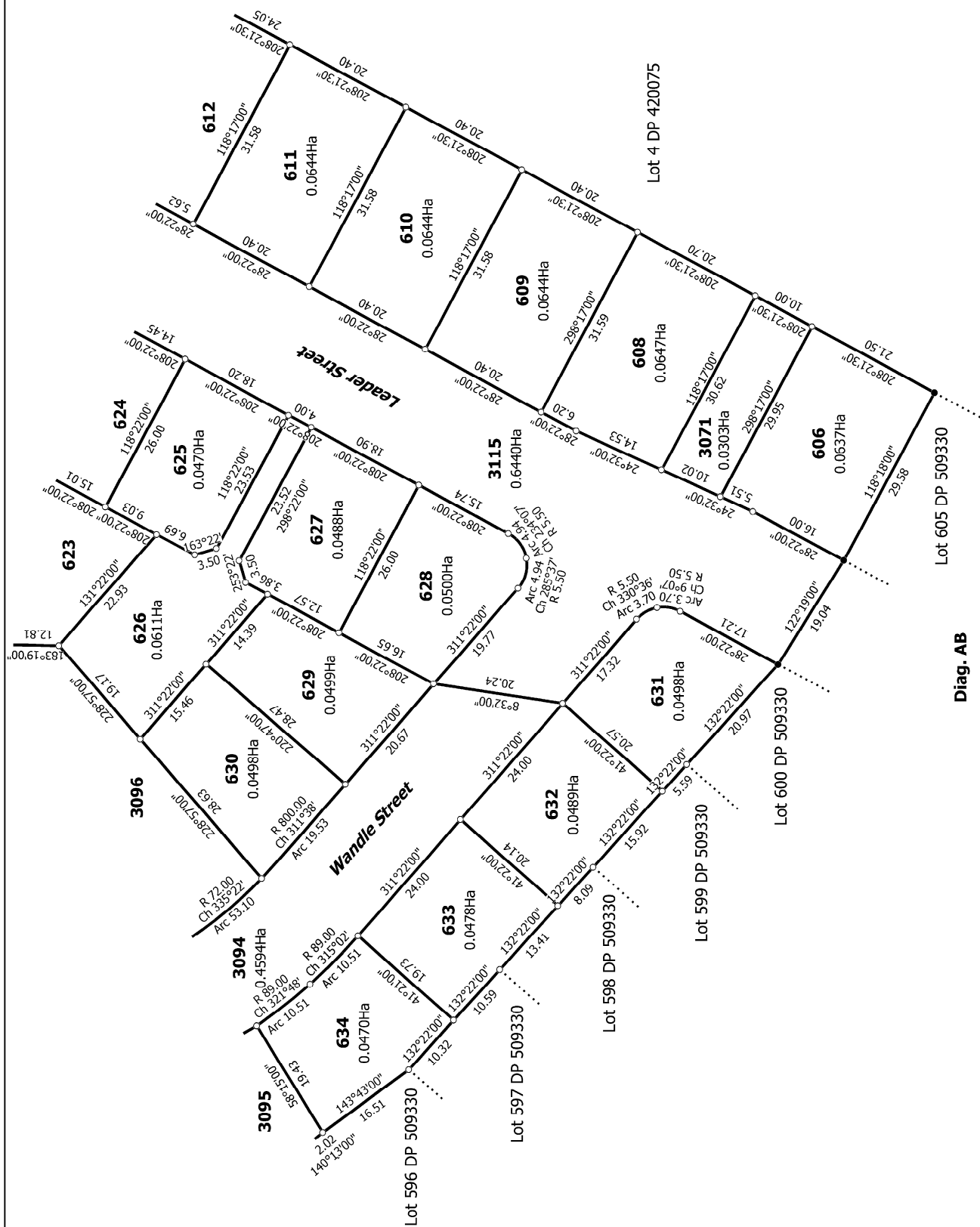
Title Plan
LT 512762
DRAFT

Digitally Generated Plan

Generated on: 13/10/2017 06:00am Page 5 of 8

Lots 606, 608 - 638, 641 - 652, 3071, 3094 - 3096 and 3115 Being Subdivision of
Lot 3031 DP 509330





T 3/4

Land District: Canterbury

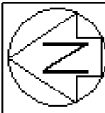
Lots 606, 608 - 638, 641 - 652, 3071, 3094 - 3096 and 3115 Being Subdivision of

Surveyor: Keith Alex Ashby
Firm: Aurecon (Christchurch)

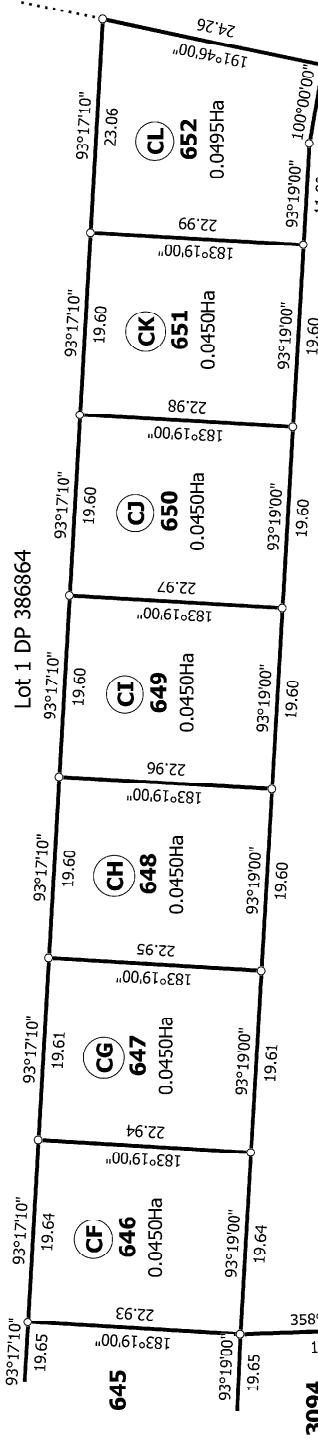
Title Plan
LT 512762
DRAFT

Digitally Generated Plan

Generated on: 13/10/2017 08:00am Page 7 of 8

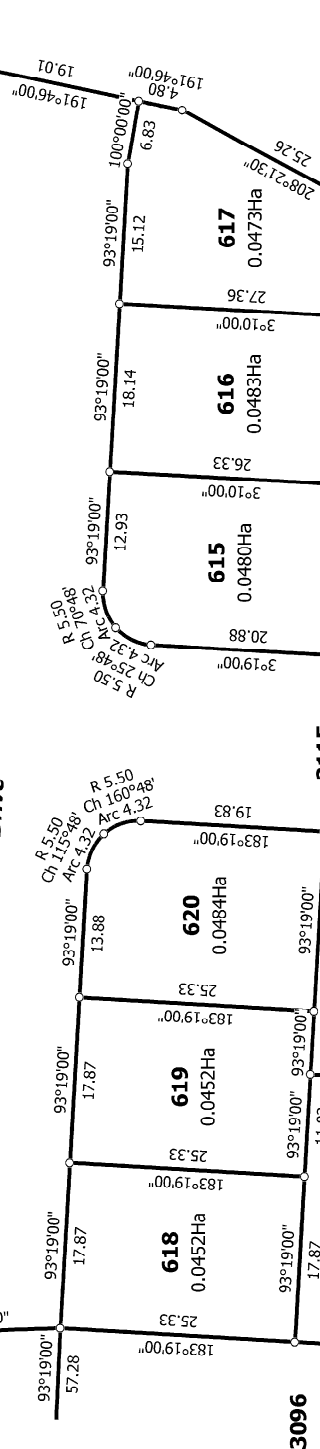


Lot 1 DP 386864

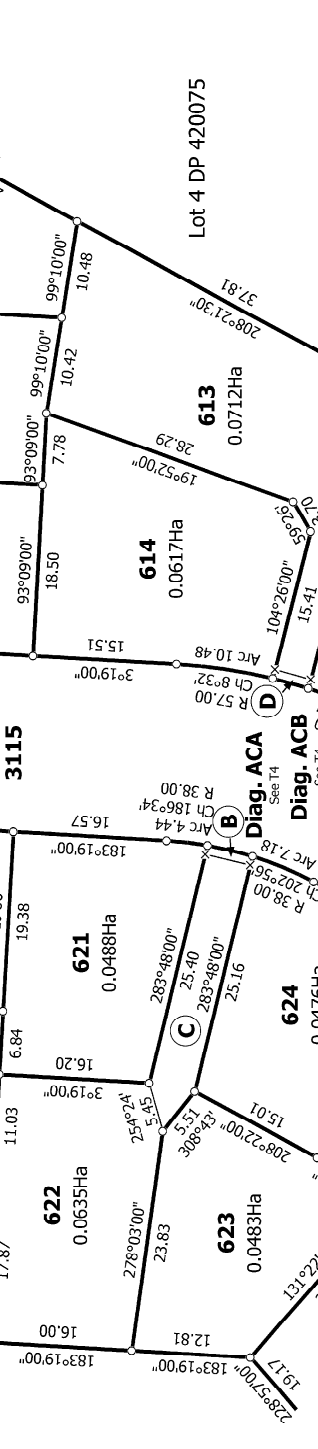


3094

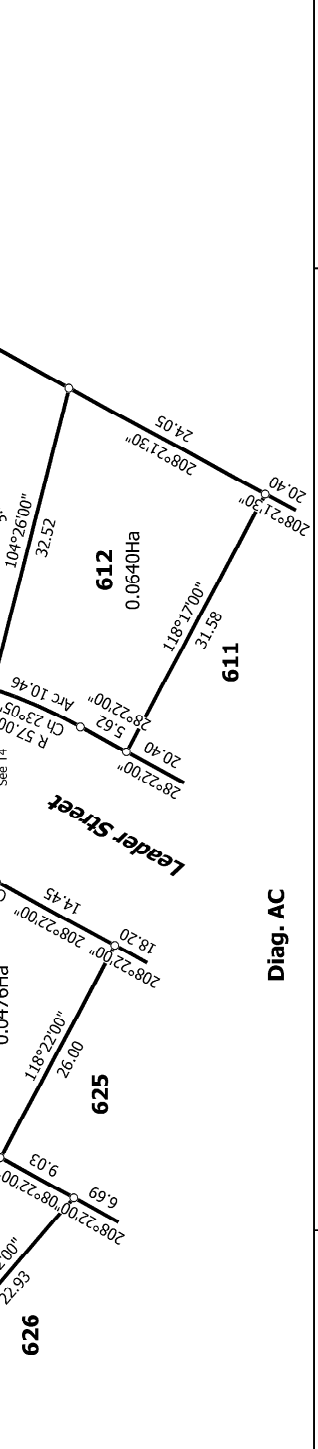
Katrine Drive



3096



Lot 4 DP 420075



Diag. AC

Ref 235361

T 4/4

Land District: Canterbury

Digitally Generated Plan

Generated on: 13/10/2017 06:00am Page 3 of 8

Lots 606, 608 - 638, 641 - 652, 3071, 3094 - 3096 and 3115 Being Subdivision of

Lot 3031 DP 509330

Surveyor: Keith Alex Ashby

Firm: Aurecon (Christchurch)

Title Plan

LT 512762

DRAFT