



Title Plan - LT 509330

DRAFT - Subject to final approval

Survey Number	LT 509330
Surveyor Reference	235361 Stage 2w
Surveyor	Keith Alex Ashby
Survey Firm	Aurecon (Christchurch)
Surveyor Declaration	

Survey Details

Dataset Description	Lots 493-509, 560-605, 639, 640, 653, 677, 760-766, 3030, 3031, 3086, 3092, 3093, 3105, 3110, 3117 & 3118 being Subdivision of Lot 3030 DP 503675 and Lot 3 DP 467428		
Status	Initiated		
Land District	Canterbury	Survey Class	Class A
Submitted Date		Survey Approval Date	
		Deposit Date	

Territorial Authorities

Christchurch City

Comprised In

CT 756803
CT 625858

Created Parcels

Parcels	Parcel Intent	Area	CT Reference
Lot 501 Deposited Plan 509330	Fee Simple Title	0.0474 Ha	778690
Lot 502 Deposited Plan 509330	Fee Simple Title	0.0500 Ha	778691
Lot 503 Deposited Plan 509330	Fee Simple Title	0.0475 Ha	778692
Lot 500 Deposited Plan 509330	Fee Simple Title	0.0475 Ha	778693
Lot 504 Deposited Plan 509330	Fee Simple Title	0.0477 Ha	778694
Lot 505 Deposited Plan 509330	Fee Simple Title	0.0450 Ha	778695
Lot 506 Deposited Plan 509330	Fee Simple Title	0.0455 Ha	778696
Lot 507 Deposited Plan 509330	Fee Simple Title	0.0459 Ha	778697
Lot 508 Deposited Plan 509330	Fee Simple Title	0.0450 Ha	778698
Lot 509 Deposited Plan 509330	Fee Simple Title	0.0465 Ha	778699
Lot 493 Deposited Plan 509330	Fee Simple Title	0.0471 Ha	778700
Lot 494 Deposited Plan 509330	Fee Simple Title	0.0481 Ha	778701
Lot 495 Deposited Plan 509330	Fee Simple Title	0.0482 Ha	778702
Lot 496 Deposited Plan 509330	Fee Simple Title	0.0476 Ha	778703
Lot 497 Deposited Plan 509330	Fee Simple Title	0.0464 Ha	778704
Lot 498 Deposited Plan 509330	Fee Simple Title	0.0461 Ha	778705
Lot 499 Deposited Plan 509330	Fee Simple Title	0.0458 Ha	778706
Lot 560 Deposited Plan 509330	Fee Simple Title	0.0460 Ha	778707
Lot 561 Deposited Plan 509330	Fee Simple Title	0.0483 Ha	778708
Lot 562 Deposited Plan 509330	Fee Simple Title	0.0450 Ha	778709
Lot 563 Deposited Plan 509330	Fee Simple Title	0.0450 Ha	778710
Lot 564 Deposited Plan 509330	Fee Simple Title	0.0450 Ha	778711



Title Plan - LT 509330

Created Parcels

Parcels	Parcel Intent	Area	CT Reference
Lot 565 Deposited Plan 509330	Fee Simple Title	0.0479 Ha	778712
Lot 566 Deposited Plan 509330	Fee Simple Title	0.0482 Ha	778713
Lot 567 Deposited Plan 509330	Fee Simple Title	0.0491 Ha	778714
Lot 568 Deposited Plan 509330	Fee Simple Title	0.0496 Ha	778715
Lot 569 Deposited Plan 509330	Fee Simple Title	0.0473 Ha	778716
Lot 570 Deposited Plan 509330	Fee Simple Title	0.0472 Ha	778717
Lot 571 Deposited Plan 509330	Fee Simple Title	0.0479 Ha	778718
Lot 573 Deposited Plan 509330	Fee Simple Title	0.0468 Ha	778719
Lot 577 Deposited Plan 509330	Fee Simple Title	0.0454 Ha	778720
Lot 578 Deposited Plan 509330	Fee Simple Title	0.0454 Ha	778721
Lot 579 Deposited Plan 509330	Fee Simple Title	0.0454 Ha	778722
Lot 587 Deposited Plan 509330	Fee Simple Title	0.0455 Ha	778723
Lot 588 Deposited Plan 509330	Fee Simple Title	0.0452 Ha	778724
Lot 589 Deposited Plan 509330	Fee Simple Title	0.0450 Ha	778725
Lot 590 Deposited Plan 509330	Fee Simple Title	0.0450 Ha	778726
Lot 639 Deposited Plan 509330	Fee Simple Title	0.0452 Ha	778727
Lot 640 Deposited Plan 509330	Fee Simple Title	0.0450 Ha	778728
Lot 591 Deposited Plan 509330	Fee Simple Title	0.0499 Ha	778729
Lot 592 Deposited Plan 509330	Fee Simple Title	0.0494 Ha	778730
Lot 595 Deposited Plan 509330	Fee Simple Title	0.0491 Ha	778731
Lot 598 Deposited Plan 509330	Fee Simple Title	0.0481 Ha	778732
Lot 599 Deposited Plan 509330	Fee Simple Title	0.0473 Ha	778733
Lot 600 Deposited Plan 509330	Fee Simple Title	0.0496 Ha	778734
Lot 601 Deposited Plan 509330	Fee Simple Title	0.0646 Ha	778735
Lot 603 Deposited Plan 509330	Fee Simple Title	0.0650 Ha	778736
Lot 604 Deposited Plan 509330	Fee Simple Title	0.0619 Ha	778737
Lot 605 Deposited Plan 509330	Fee Simple Title	0.0621 Ha	778738
Lot 653 Deposited Plan 509330	Fee Simple Title	0.0649 Ha	778739
Lot 677 Deposited Plan 509330	Fee Simple Title	0.0618 Ha	778740
Lot 3093 Deposited Plan 509330	Vesting on Deposit for Local Purpose Reserve	0.0510 Ha	778741
Lot 3105 Deposited Plan 509330	Vesting on Deposit for Local Purpose Reserve	0.6216 Ha	778742
Lot 762 Deposited Plan 509330	Fee Simple Title	0.0496 Ha	778743
Lot 763 Deposited Plan 509330	Fee Simple Title	0.0499 Ha	778744
Lot 760 Deposited Plan 509330	Fee Simple Title	0.0499 Ha	778745
Lot 761 Deposited Plan 509330	Fee Simple Title	0.0482 Ha	778746
Lot 764 Deposited Plan 509330	Fee Simple Title	0.0495 Ha	778747
Lot 765 Deposited Plan 509330	Fee Simple Title	0.0500 Ha	778748
Lot 766 Deposited Plan 509330	Fee Simple Title	0.0500 Ha	778749
Lot 584 Deposited Plan 509330	Fee Simple Title	0.0455 Ha	778750
Lot 583 Deposited Plan 509330	Fee Simple Title	0.0453 Ha	778751
Lot 576 Deposited Plan 509330	Fee Simple Title	0.0464 Ha	778752
Lot 580 Deposited Plan 509330	Fee Simple Title	0.0454 Ha	778753



Title Plan - LT 509330

Created Parcels

Parcels	Parcel Intent	Area	CT Reference
Lot 581 Deposited Plan 509330	Fee Simple Title	0.0452 Ha	778754
Lot 582 Deposited Plan 509330	Fee Simple Title	0.0458 Ha	778755
Lot 593 Deposited Plan 509330	Fee Simple Title	0.0484 Ha	778756
Lot 594 Deposited Plan 509330	Fee Simple Title	0.0485 Ha	778757
Lot 3092 Deposited Plan 509330	Vesting on Deposit for Local Purpose Reserve	0.0223 Ha	778758
Lot 596 Deposited Plan 509330	Fee Simple Title	0.0454 Ha	778759
Lot 597 Deposited Plan 509330	Fee Simple Title	0.0477 Ha	778760
Lot 585 Deposited Plan 509330	Fee Simple Title	0.0466 Ha	778761
Lot 586 Deposited Plan 509330	Fee Simple Title	0.0458 Ha	778762
Lot 572 Deposited Plan 509330	Fee Simple Title	0.0474 Ha	778763
Lot 574 Deposited Plan 509330	Fee Simple Title	0.0467 Ha	778764
Lot 575 Deposited Plan 509330	Fee Simple Title	0.0501 Ha	778765
Lot 602 Deposited Plan 509330	Fee Simple Title	0.0649 Ha	778766
Lot 3091 Deposited Plan 509330	Vesting on Deposit for Road	0.6938 Ha	
Lot 3110 Deposited Plan 509330	Vesting on Deposit for Road	1.2417 Ha	
Lot 3031 Deposited Plan 509330	Fee Simple Title	3.8378 Ha	778767
Lot 3030 Deposited Plan 509330	Fee Simple Title	25.5694 Ha	778768
Area ZB Deposited Plan 509330	Easement		
Area ZA Deposited Plan 509330	Easement		
Area A Deposited Plan 509330	Easement		
Lot 3117 Deposited Plan 509330	Fee Simple Title	0.0005 Ha	778769
Lot 3118 Deposited Plan 509330	Fee Simple Title	0.0005 Ha	778770
Area CA Deposited Plan 509330	Land Covenant		
Area CB Deposited Plan 509330	Land Covenant		
Area CC Deposited Plan 509330	Land Covenant		
Area CD Deposited Plan 509330	Land Covenant		
Area CE Deposited Plan 509330	Land Covenant		
Area CF Deposited Plan 509330	Land Covenant		
Area CG Deposited Plan 509330	Land Covenant		
Area CH Deposited Plan 509330	Land Covenant		
Area CI Deposited Plan 509330	Land Covenant		
Area CJ Deposited Plan 509330	Land Covenant		
Area CK Deposited Plan 509330	Land Covenant		
Area CL Deposited Plan 509330	Land Covenant		
Area CM Deposited Plan 509330	Land Covenant		
Area CN Deposited Plan 509330	Land Covenant		
Area CO Deposited Plan 509330	Land Covenant		
Area CP Deposited Plan 509330	Land Covenant		
Area CQ Deposited Plan 509330	Land Covenant		
Area CR Deposited Plan 509330	Land Covenant		
Area CS Deposited Plan 509330	Land Covenant		



Title Plan - LT 509330

Created Parcels

Parcels	Parcel Intent	Area	CT Reference
Area CT Deposited Plan 509330	Land Covenant		
Area CU Deposited Plan 509330	Land Covenant		
Area CV Deposited Plan 509330	Land Covenant		
Area CW Deposited Plan 509330	Land Covenant		
Area CX Deposited Plan 509330	Land Covenant		
Area CY Deposited Plan 509330	Land Covenant		
Area CZ Deposited Plan 509330	Land Covenant		
Area BA Deposited Plan 509330	Land Covenant		
Area BB Deposited Plan 509330	Land Covenant		
Area BC Deposited Plan 509330	Land Covenant		
Area BD Deposited Plan 509330	Land Covenant		
Area BE Deposited Plan 509330	Land Covenant		
Area BF Deposited Plan 509330	Land Covenant		
Area BG Deposited Plan 509330	Land Covenant		
Area BH Deposited Plan 509330	Land Covenant		
Area BI Deposited Plan 509330	Land Covenant		
Area BJ Deposited Plan 509330	Land Covenant		
Area BK Deposited Plan 509330	Land Covenant		
Area BL Deposited Plan 509330	Land Covenant		
Area BM Deposited Plan 509330	Land Covenant		
Area BN Deposited Plan 509330	Land Covenant		
Area BO Deposited Plan 509330	Land Covenant		
Area BP Deposited Plan 509330	Land Covenant		
Area BQ Deposited Plan 509330	Land Covenant		
Area BR Deposited Plan 509330	Land Covenant		
Area BS Deposited Plan 509330	Land Covenant		
Area BT Deposited Plan 509330	Land Covenant		
Area BU Deposited Plan 509330	Land Covenant		
Area BV Deposited Plan 509330	Land Covenant		
Area DI Deposited Plan 509330	Land Covenant		
Area BW Deposited Plan 509330	Land Covenant		
Area BX Deposited Plan 509330	Land Covenant		
Area BY Deposited Plan 509330	Land Covenant		
Area BZ Deposited Plan 509330	Land Covenant		
Area DA Deposited Plan 509330	Land Covenant		
Area DB Deposited Plan 509330	Land Covenant		
Area DC Deposited Plan 509330	Land Covenant		
Area DD Deposited Plan 509330	Land Covenant		
Area DE Deposited Plan 509330	Land Covenant		
Area DF Deposited Plan 509330	Land Covenant		
Area DG Deposited Plan 509330	Land Covenant		
Area DH Deposited Plan 509330	Land Covenant		
Lot 3086 Deposited Plan 509330	Vesting on Deposit for Local Purpose Reserve	0.6393 Ha	778815



Title Plan - LT 509330

Created Parcels

Parcels	Parcel Intent	Area	CT Reference
Area B Deposited Plan 509330	Easement		
Total Area		36.2815 Ha	

Schedule / Memorandum

Land Registration District	Plan Number	Surveyor Ref
Canterbury	DP 509330	235361 – Stage 2w

Territorial Authority (the Council)	Council Ref
Christchurch City Council	RMA92022731

MEMORANDUM OF EASEMENT IN GROSS			
Purpose	Servient Tenement		Grantee
	Lot No	Shown	
Right to Drain Water in Gross	3030	ZA	Christchurch City Council

SCHEDULE OF EASEMENTS IN GROSS			
Purpose	Servient Tenement		Grantee
	Lot No	Shown	
Right to Drain Water in Gross	3105	A & B	Christchurch City Council

SCHEDULE OF EXISTING EASEMENTS			
Purpose	Servient Tenement		Document
	Lot No	Shown	
Right to Drain Water in Gross	3030	ZB	EI 10612125.7

NOTES:

Areas CA,CB,CC,CD,CE,CF,CG,CH,CI,CJ,CK,CL,CM,CN,CO,CP,CQ,CR,CS,CT,CU,CV,CW,CX,CY,CZ,BA,BB,BC,BD,BE,BF,BG,BH,BI,BJ,BK,BL,BM,BN,BO,BP,BQ,BR,BS,BT,BU,BV,BW,BX,BY,BZ,DA,DB,DC,DD,DF,DG,DH & DI are subject to a Land Covenant created by EI 10369087.1.

Lots 3091 & 3110 are to vest as Road in the Christchurch City Council.

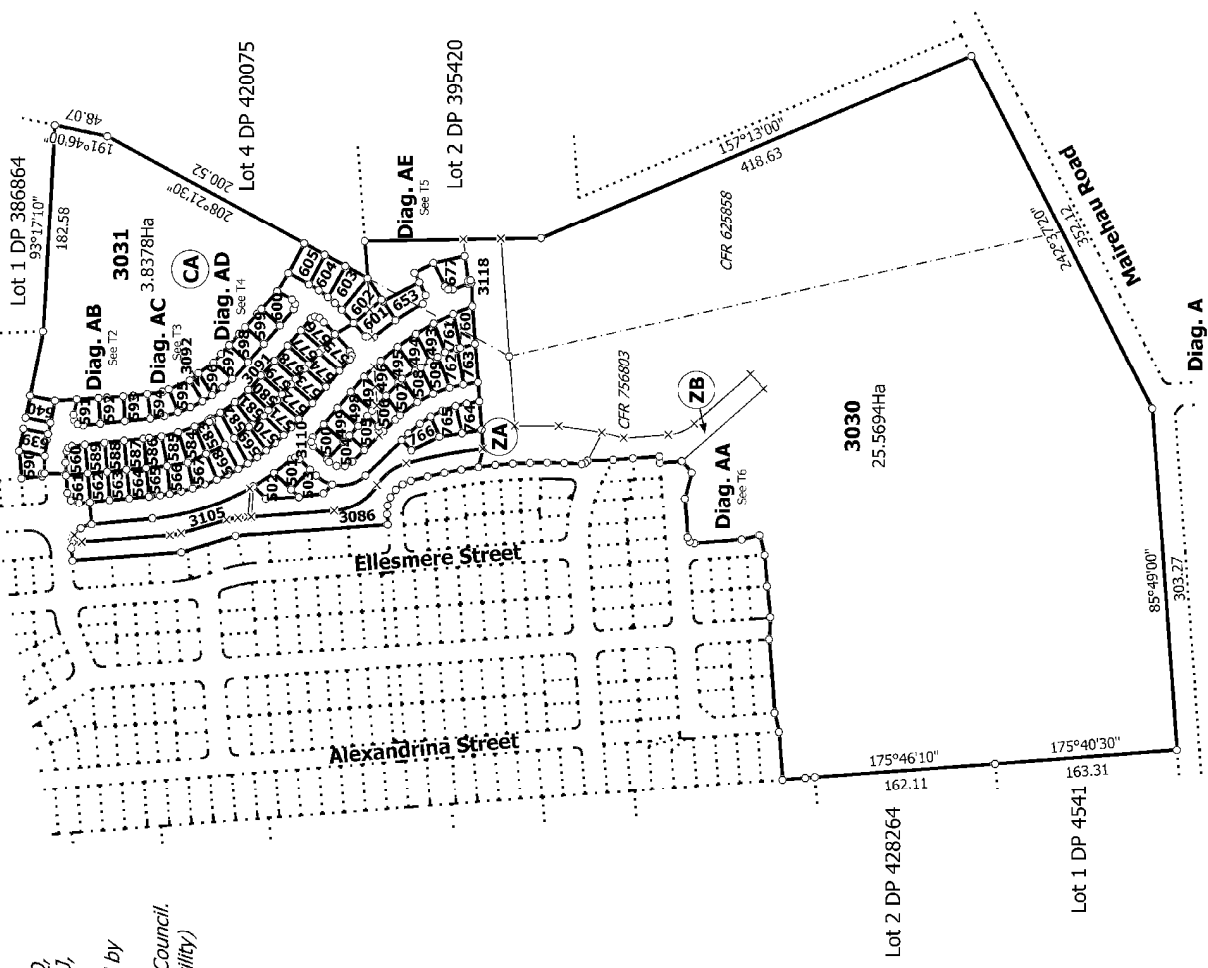
Lots 3086, 3093, 3105 & 3113 are to vest as Local Purpose (Utility) Reserves in the Christchurch City Council.

Existing Right to Drain Water in Gross shown as ZA & ZC over Lot 3030 on DP 503675 (CFR 756803) and also described in document EI 10563821.9 is to be extinguished.

Existing Right to Drain Water in Gross shown as ZD over Lot 3 on DP 467428 (CFR 625858) and also described in document EI 10270055.6 is to be extinguished.



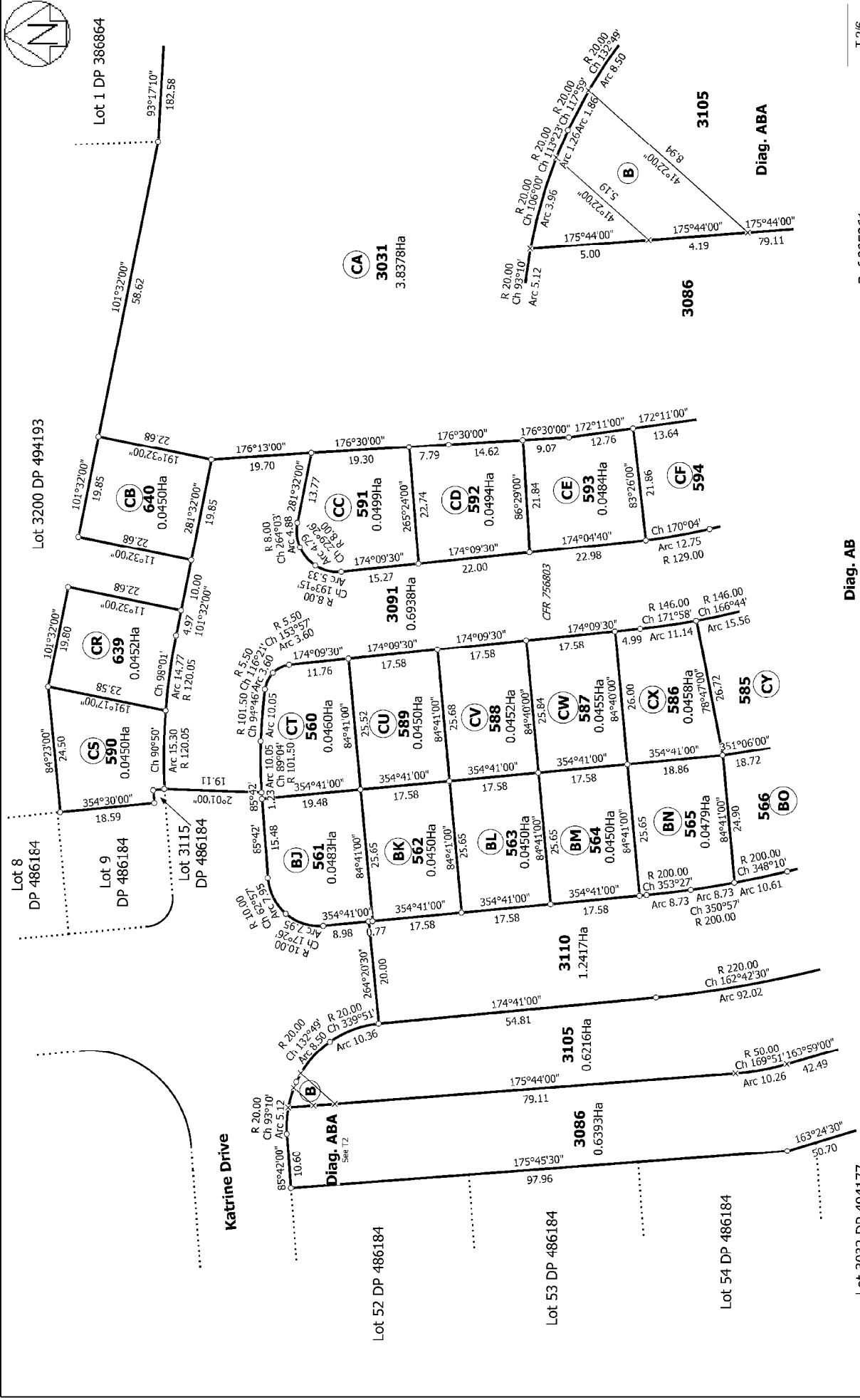
NOTE:
Areas CA, CB, CC, CD, CE, CF, CG, CH, CI, CJ, CK, CL, CM, CN, CO, CP, CQ, CR, CS, CT, CU, CV, CW, CX, CY, CZ, BA, BB, BC, BD, BE, BF, BG, BH, BI, BJ, BK, BL, BM, BN, BO, BP, BQ, BR, BS, BT, BU, BV, BW, BX, BY, BZ, DA, DB, BC, DD, DE, DF, DG, DH, DI are subject to a Land Covenant created by ET 10369087.1.
Lots 3091 & 3110 are to vest as Road in the Christchurch City Council.
Lots 3086, 3093, 3105 & 3113 are to vest as Local Purpose (Utility) Reserves in the Christchurch City Council.



T 1/6

Ref 235361

Land District: Canterbury	Lots 493-509, 560-605, 639, 640, 653, 677, 760-766, 3030, 3031, 3086, 3092, 3093, 3105, 3110, 3117 & 3118 being Subdivision of Lot 3030 DP 503675 and Lot 3 DP 467428	Surveyor: Keith Alex Ashby Firm: Aurecon (Christchurch)	Title Plan LT 509330 DRAFT
Digitally Generated Plan Generated on: 30/03/2017 2:53pm Page 7 of 12			

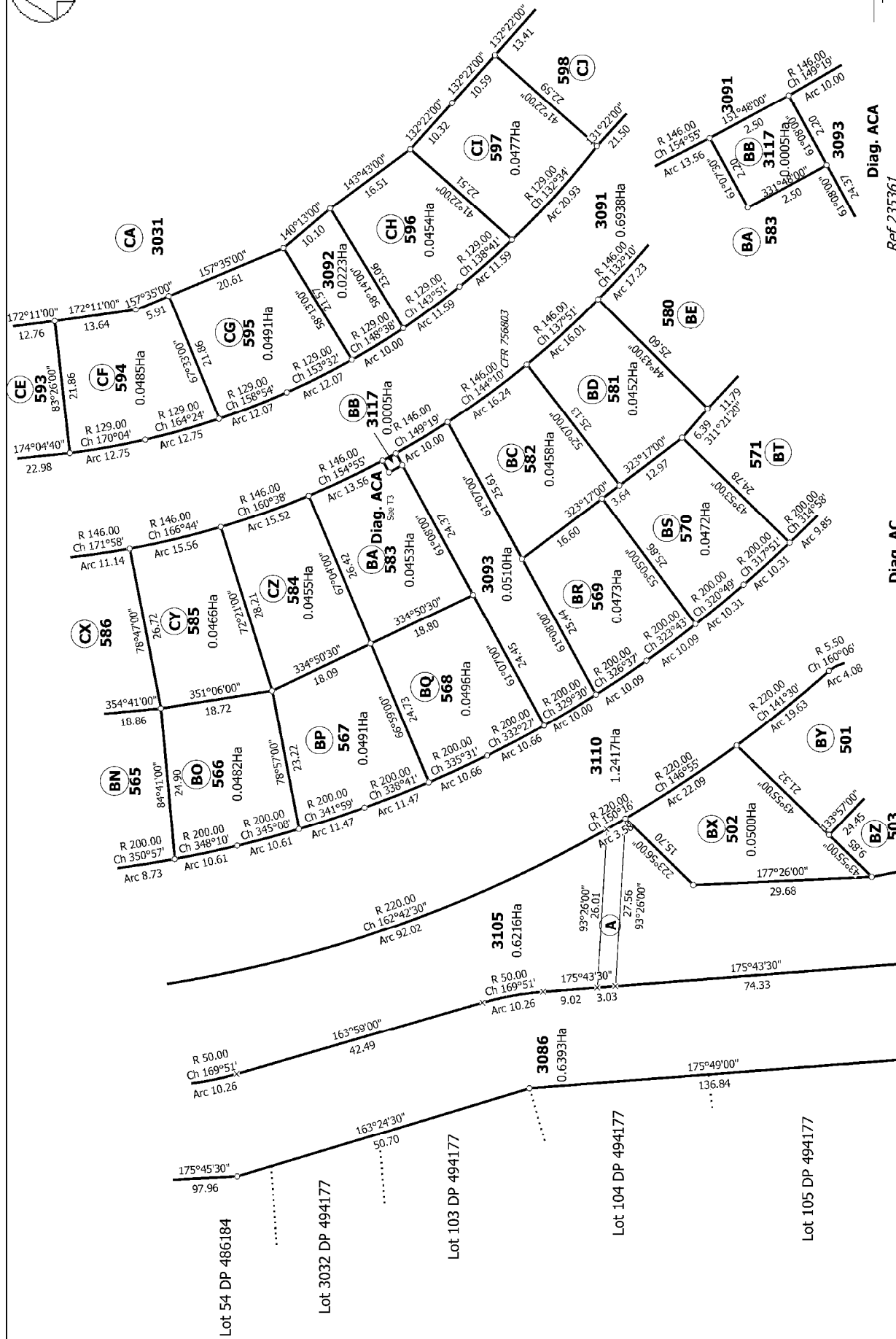


12/6

Ref 235361

Diag. AB

Land District: Canterbury	Surveyor: Keith Alex Ashby Firm: Aurecon (Christchurch)	Title Plan LT 509330 DRAFT
Lots 493-509, 560-605, 639, 640, 653, 677, 760-766, 3030, 3031, 3086, 3092, 3093, 3105, 3110, 3117 & 3118 being Subdivision of Lot 3030 DP 503675 and Lot 3 DP 467428		
Digitally Generated Plan Generated on: 30/03/2017 2:53pm Page 6 of 12		



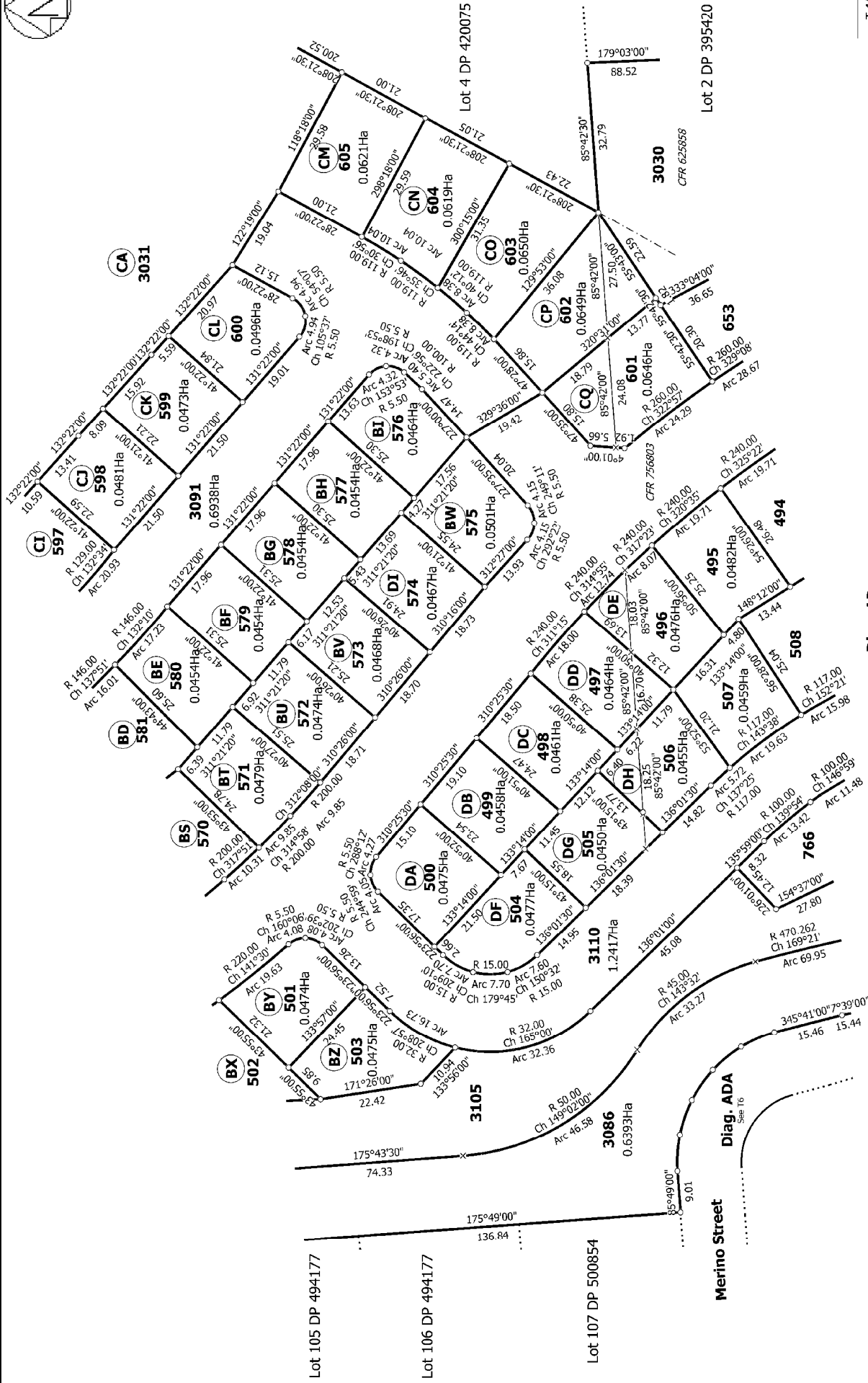
Diag. ACA

	503	Diag. AC
Lots 493-509, 560-605, 639, 640, 653, 677, 760-766, 3030, 3031, 3086, 3092, 3093, 3105, 3110, 3117 & 3118 being Subdivision of Lot 3030 DP 503675 and		

Title Plan
LT 509330
DRAFT

Digitally Generated Plan

Generated on: 30/03/2017 2:53pm Page 9 of 12

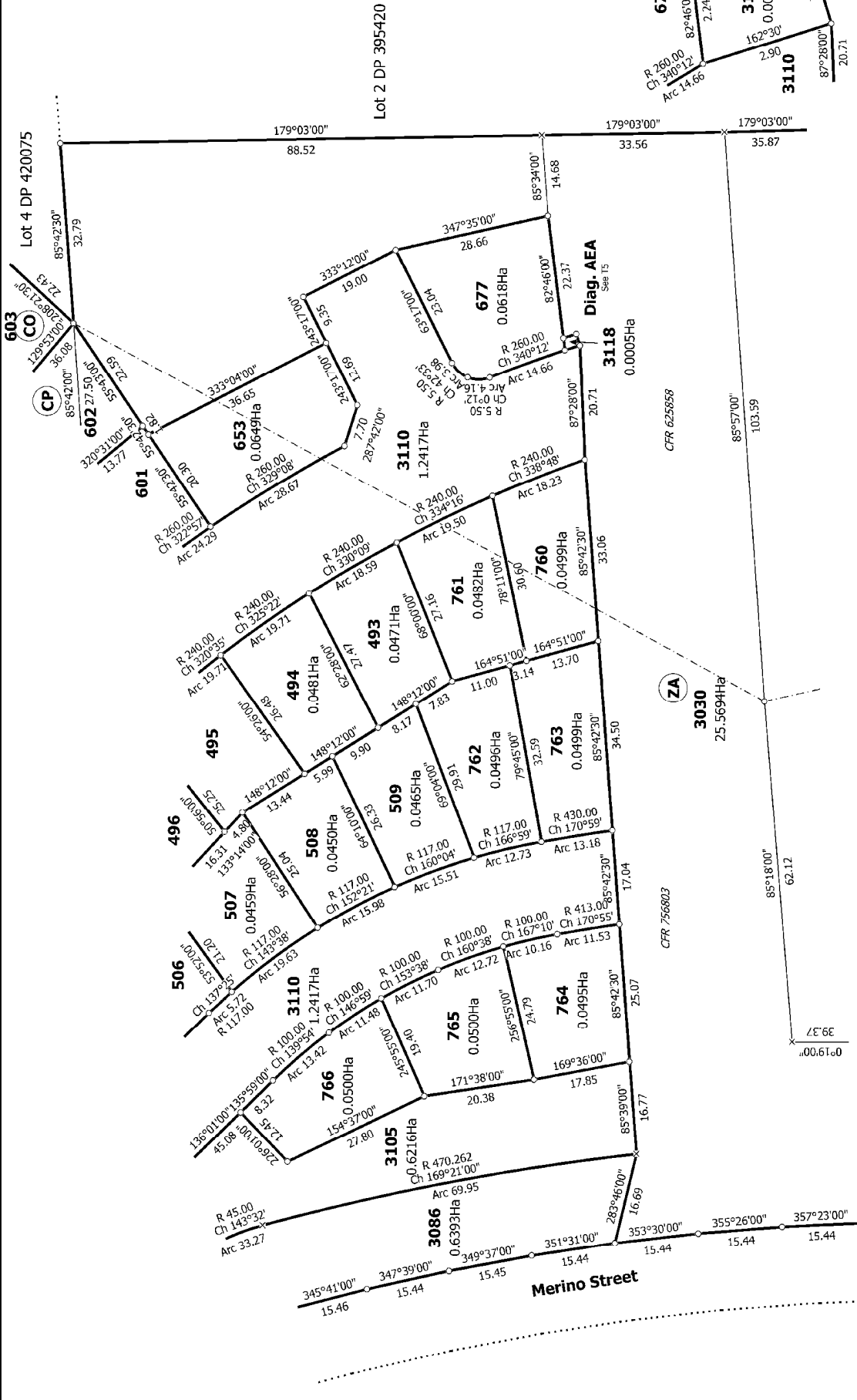


T 4/6

Ref 235361

Diag. AD

Land District: Canterbury	Surveyor: Keith Alex Ashby Firm: Aurecon (Christchurch)	Title Plan LT 509330 DRAFT
Digitally Generated Plan Generated on: 30/03/2017 2:53pm Page 10 of 12	Lots 493-509, 560-605, 639, 640, 653, 677, 760-766, 3030, 3031, 3086, 3092, 3093, 3105, 3110, 3117 & 3118 being Subdivision of Lot 3030 DP 503675 and 1 of 3 DP 467428	



T 5/6

Ref 235361

Land District: Canterbury	Surveyor: Keith Alex Ashby Firm: Aurecon (Christchurch)	Title Plan LT 509330 DRAFT
Lots 493-509, 560-605, 639, 640, 653, 677, 760-766, 3030, 3031, 3086, 3092, 3093, 3105, 3110, 3117 & 3118 being Subdivision of Lot 3030 DP 503675 and Lot 3 DP 467428		
Digitally Generated Plan Generated on: 30/03/2017 2:53pm Page 11 of 12		



Lot 2 DP 395420

T 6/6

Ref 235361

Title Plan
LT 509330
DRAFT

Surveyor: Keith Alex Ashby
Firm: Aurecon (Christchurch)

Diag. AA

Lots 493-509, 560-605, 639, 640, 653, 677, 760-766, 3030, 3031, 3086, 3092,
3093, 3105, 3110, 3117 & 3118 being Subdivision of Lot 3030 DP 503675 and
Lot 3 DP 467428

Land District: Canterbury

Digitally Generated Plan
Generated on: 30/03/2017 2:53pm Page 12 of 12

179°03'00" 33.56 179°03'00" 35.87 157°13'00" 418.63

85°57'00" 103.59

CFR 625858

ZA

85°18'00" 62.12

39.37

0°19'00"

39.25

83°33'00"

20.27

13°58'00"

39.85

355°46'00"

17.71

Arc 25.71

16.40

Ch 337°21'

17.71

318°56'30"

66.91

Ch 240.00

Arc 17.50

138°56'30"

97.32

355°44'

19.82

105°01'

23.82

34.96

85°44'

42.62

355°44'

346°38'

16.46

75°12'

17.90

85°44'

27.63

83°24'30"

27.07

19.49

93°17'

66.02

85°44'

17.20

76°57'

42.51

355°39'15"

20.50

8.53

175°46'10"

162.11

Lot 2 DP 314914

Lot 2 DP 428264

Lot 192 DP 503675

Lot 193 DP 503675

Lot 203 DP 503675

Lot 204 DP 503675

Lot 211 DP 503675

Legal Road

Georgina Street

Guyon Street

Merino Street

Diag. AAA

Diag. AAB

Diag. AAB

Diag. AAA

Diag. AAB

Diag. AAA

Diag. AAB

Diag. AAA

Diag. AAB

Diag. AAA

Diag. AAB

Diag. AAA

Diag. AAB

Diag. AAA

Diag. AAB

Diag. AAA

Diag. AAB

Diag. AAA

Diag. AAB

Diag. AAA

Diag. AAB

Diag. AAA

Diag. AAB

Diag. AAA

Diag. AAB

Diag. AAA

Diag. AAB

Diag. AAA

Diag. AAB

Diag. AAA

Diag. AAB

Diag. AAA

Diag. AAB

Diag. AAA

Diag. AAB

Diag. AAA

Diag. AAB

Diag. AAA

Diag. AAB

Diag. AAA

Diag. AAB

Diag. AAA

Diag. AAB

Diag. AAA

Diag. AAB

Diag. AAA

Diag. AAB

Diag. AAA

Diag. AAB

Diag. AAA

Diag. AAB

Diag. AAA

Diag. AAB

Diag. AAA

Diag. AAB

Diag. AAA

Diag. AAB

Diag. AAA

Diag. AAB

Diag. AAA

Diag. AAB

Diag. AAA

Diag. AAB

Diag. AAA

Diag. AAB

Diag. AAA

Diag. AAB

Diag. AAA

Diag. AAB

Diag. AAA

Diag. AAB

Diag. AAA

Diag. AAB

Diag. AAA

Diag. AAB

Diag. AAA

Diag. AAB

Diag. AAA

Diag. AAB

Diag. AAA

Diag. AAB

Diag. AAA

Diag. AAB

Diag. AAA

Diag. AAB

Diag. AAA

Diag. AAB

Diag. AAA

Diag. AAB

Diag. AAA

Diag. AAB

Diag. AAA

Diag. AAB

Diag. AAA

Diag. AAB

Diag. AAA

Diag. AAB

Diag. AAA

Diag. AAB

Diag. AAA

Diag. AAB

Diag. AAA

Diag. AAB

Diag. AAA

Diag. AAB

Diag. AAA

Diag. AAB

Diag. AAA

Diag. AAB

Diag. AAA

Diag. AAB

Diag. AAA

Diag. AAB

Diag. AAA

Diag. AAB

Diag. AAA

Diag. AAB

Diag. AAA

Diag. AAB

Diag. AAA

Diag. AAB

Diag. AAA

Diag. AAB

Diag. AAA

Diag. AAB

Diag. AAA

Diag. AAB

Diag. AAA

Diag. AAB

Diag. AAA

Diag. AAB

Diag. AAA

Diag. AAB

Diag. AAA

Diag. AAB

Diag. AAA

Diag. AAB

Diag. AAA

Diag. AAB

Diag. AAA

Diag. AAB

Diag. AAA

Diag. AAB

Diag. AAA

Diag. AAB

Diag. AAA

Diag. AAB

Diag. AAA

Diag. AAB

Diag. AAA

Diag. AAB

Diag. AAA

Diag. AAB

Diag. AAA

Diag. AAB

Diag. AAA

Diag. AAB

Diag. AAA

Diag. AAB

Diag. AAA

Diag. AAB

Diag. AAA

Diag. AAB

Diag. AAA

Diag. AAB

Diag. AAA

Diag. AAB

Diag. AAA

Diag. AAB

Diag. AAA

Diag. AAB

Diag. AAA

Diag. AAB

Diag. AAA

Diag. AAB

Diag. AAA

Diag. AAB

Diag. AAA

Diag. AAB

Diag. AAA

Diag. AAB

Diag. AAA

Diag. AAB

Diag. AAA

Diag. AAB

Diag. AAA

Diag. AAB

Diag. AAA

Diag. AAB

Diag. AAA

Diag. AAB

Diag. AAA

Diag. AAB

Diag. AAA

Diag. AAB

Diag. AAA

Diag. AAB

Diag. AAA

Diag. AAB

Diag. AAA

Diag. AAB

Diag. AAA

Diag. AAB

Diag. AAA

Diag. AAB

Diag. AAA

Diag. AAB

Diag. AAA

Diag. AAB

Diag. AAA

Diag. AAB

Diag. AAA

Diag. AAB

Diag. AAA

Diag. AAB

Diag. AAA

Diag. AAB

Diag. AAA

Diag. AAB

Diag. AAA

Diag. AAB

Diag. AAA

Diag. AAB

Diag. AAA

Diag. AAB

Diag. AAA

Diag. AAB

Diag. AAA

Diag. AAB

Diag. AAA

Diag. AAB

Diag. AAA

Diag. AAB